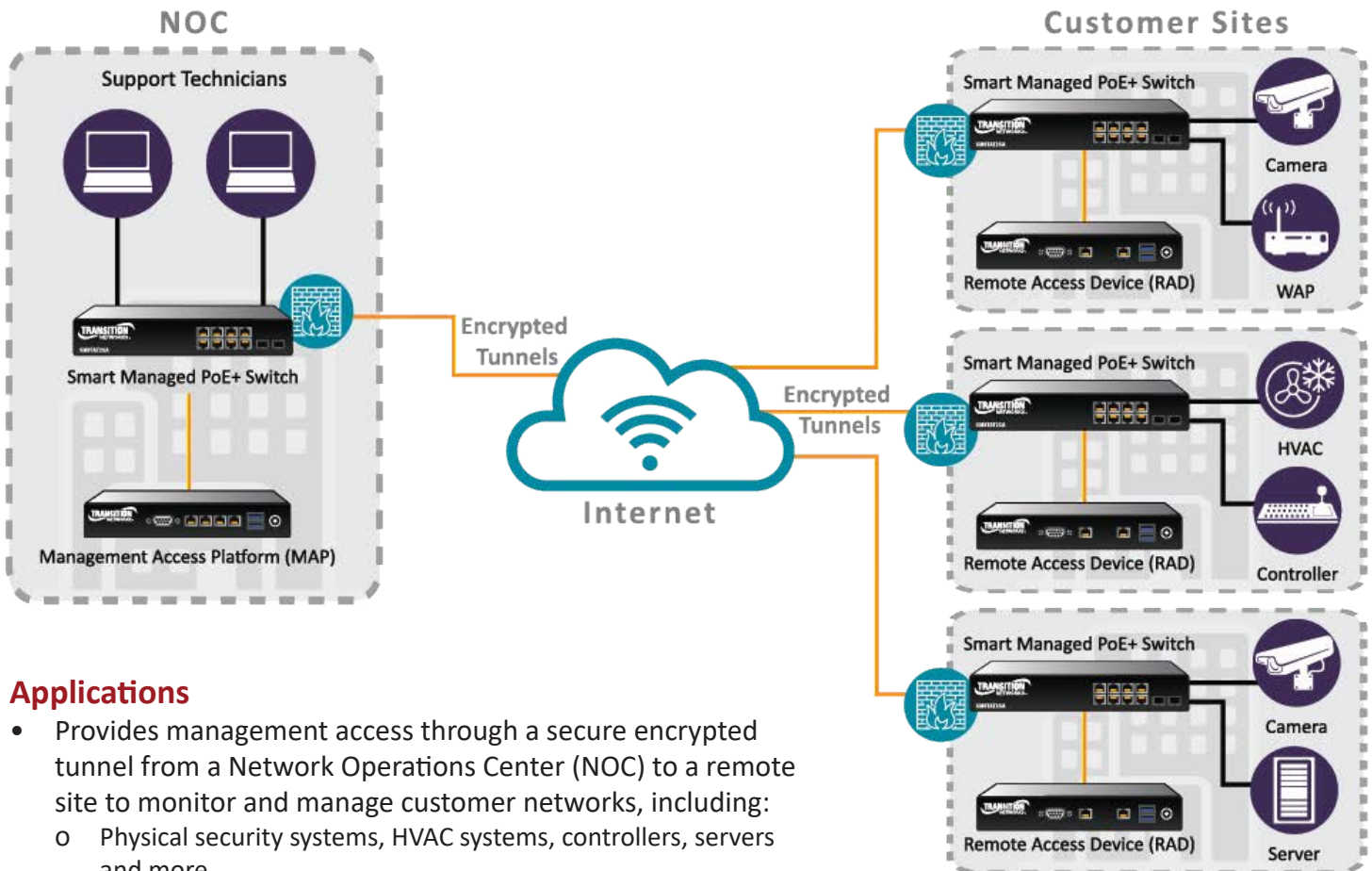


Secure Remote Access

Manage all your remote sites from the NOC simply and securely



Applications

- Provides management access through a secure encrypted tunnel from a Network Operations Center (NOC) to a remote site to monitor and manage customer networks, including:
 - o Physical security systems, HVAC systems, controllers, servers and more
- Manage networks at multiple sites from a single central location
- Increase managed services revenue without dispatching service trucks and personnel

Features

Utilizes encrypted websocket tunnel between Secure Management Access Portal at NOC and Secure Remote Access Device at remote site

Bi-directional encryption

Connection is initiated from the RAD inside the customer network to the MAP at the host/control site (in-to-out)

Allows instantaneous remote access for immediate troubleshooting

Remote access simplifies proactive maintenance, upgrades, back-up and restore functions

Enables revenue-generating managed services

Benefits

Protects the privacy and integrity of exchanged data while in transit

Protects against eavesdropping and tampering

Eliminates the need for configuration changes to remote site firewall to allow remote access

Reduces network downtime and increases customer satisfaction

Eliminates need for planning and scheduling of personnel at remote site to coordinate remote access sessions.

Tap into Recurring Monthly Revenue (RMR) by selling customers valuable managed services.

Secure Remote Access

A Bidirectional Communication Channel from a Network Operations Center (NOC) to a Remote Site



The Transition Networks Secure Remote Access (SRA) solution creates a secure tunnel to provide a bidirectional communication channel from a Network Operations Center (NOC) to a Remote Site. The solution generally does not require configuration changes to the Remote Site Firewall.

The Remote Access Device (RAD) is located at a Remote Site and initiates a connection with the Management Access Portal (MAP) located at the NOC or Host Site. Once the tunnel is established, the Network Administrator at the NOC can connect via VPN over the tunnel to devices in the same network as the Remote Access Device or through Port Forwarding to any device the RAD can address.

SRA provides the capability for a Network Managed Services company or Integrator team to configure and monitor network devices at an end-user customer site with minimal interaction with the remote network.

Features

- **Secure Remote Access**
 - Provides secure access to remote sites utilizing encrypted tunnels
 - Connection initiated from within customer network (In-to-Out) for security
 - Reduces the need for truck rolls to remote sites
 - Allows for more intelligent truck rolls when necessary
 - Allows for proactive maintenance for upgrades, backups, and restores
 - Real-time health monitoring
 - Provides the ability to monitor troubled sites in real-time
 - Offers the ability to sell additional services
 - Improves customer satisfaction
- **Access to Remote Sites**
 - A secure tunnel is initiated from In-to-Out
 - Secure encrypted tunnel protects the privacy and integrity of the exchanged data while in transit
 - Bidirectional encryption protects against eavesdropping and tampering
 - OpenVPN utilized for whole site access
 - Port forwarding utilized for device specific access

Specifications

Access Method	WebSocket tunnel over port 443 (or user defined)	
Ports	10/100/1000Base-T RJ-45 ports USB Ports DB9 RS232 Console Port	
Status LEDs	RAD	LED 1: Power, LED 2: Prog, LED 3: Link
	MAP	LED 1: Power, LED 2: Link, LED 3: Not used
Dimensions	Width: 6.618" [168.1 mm] Height: 1.102" [28 mm] Depth: 6.169" [156.7 mm]	
Power	Compact AC Adapter Max Power: 23 Watts	
Power Input	90 to 264 VAC, 47-50 / 60-63Hz	
Power Output	12VDC, with over-current protection	
Environment	Operating: 0°C to +40°C	
Weight	RAD	0.95 lbs. [0.43 kg]
	MAP	1 lb. [0.45 kg]
Certifications	Safety: IEC/EN 60950-1, UL 60950-1, CSA C22.2 No. 60950-1-03, GB4943, EN60335 Certifications: CB, GS, CE, TUV, UL, CCC, FCC, PSE, KC, C-TICK Emission: Radiation Test & Conduction Test: EN 55022/ FCC Part 15, Harmonic Test: EN 61000-3-2, Flicker Test: EN 61000-3-3 Immunity: ESD Test: EN 61000-4-2, RS Test: EN 61000-4-3, EFT Test: EN 61000-4-4, Surge Test: EN 61000-4-5, CS Test: EN 61000-4-6, DIP Test: EN 61000-4-11	
Warranty	5 Years	

Ordering Information

An SRA-MAP-01 can support multiple SRA-RAD-01

SRA-MAP-01
Secure Management Access Portal

SRA-RAD-01
Secure Remote Access Device

Optional Accessories (sold separately)

SFP Modules

CABLE-SRA-NMC
USB to DB9F Serial Null Modem

Power Supply Included

To order the corresponding country specific power supply, add the extension from the list below to the end of the SKU; Ex: SRA-MAP-01-NA

-NA = Country Code

-NA = North America

-EU = Europe

-UK = United Kingdom