



SecureBox SDS1101 & SDS2101



SecureBox SDS1101 & SDS2101
Quick Start Guide



SecureBox SDS1101 & SDS2101

SDS1101 & SDS2101 QUICK START CONTENTS

What's In the Box	2
Pinouts	3
IP Addressing	4
Connect	5
Install the DeviceInstaller GUI	5
Assign IP Address	6-8
Add the Unit to the Device List	9
Configure the SDS1101/SDS2101	9
SDS1101 LEDs/Troubleshoot	10-11
SDS2101 LEDs/Troubleshoot	12
Contact	13

WHAT'S IN THE BOX

In addition to the SDS, the box contains the following items:

POWER SUPPLY (INTERNATIONAL UNITS):

PART #:	COMPONENT DESCRIPTION:
520-080-R	Power cube, 100-240VAC, with international adapters
500-163	Serial Cable
	CD
	Power Cord Restraint

DOCUMENTATION:

CD-ROM containing User Guide and Quick Start Guide.

DOCUMENTATION UPDATE

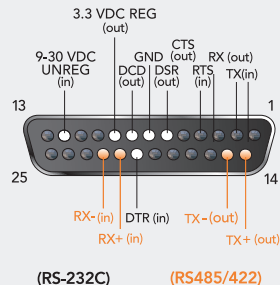
For the latest revision of this product document, please check our online documentation at www.lantronix.com/support/documentation.

The SDS products allow serial devices to securely connect to and communicate over an Ethernet network.

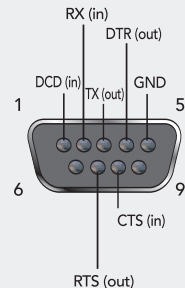
This Quick Start explains how to connect, configure, and troubleshoot your unit using a network connection and our DeviceInstaller software. For more detailed information or alternative configuration methods, refer to the User Guide on the CD.

SDS1101/2101 PINOUTS

SDS1101 Pinout



SDS2101 Pinout



IP ADDRESSING

Your unit must have a unique IP address on your network. Two ways to assign an IP are described below.

DHCP

Many networks use an automatic method of assigning an IP address called DHCP. If you are unsure whether your network uses DHCP, check with your systems administrator.

The SDS looks for a DHCP server when it first powers up. The SDS has acquired an IP address if the red LED stops flashing and the green Status LED is on continuously. You can use the DeviceInstaller software to search the network for the IP your unit has been assigned by the DHCP server and add it to the list of Lantronix devices on the network.

If the SDS does not acquire an IP, or you do not use DHCP, you must assign a fixed IP address.

FIXED IP ADDRESS

In most installations, a fixed IP address is desirable. The systems administrator generally provides the IP address.

The IP address must be within a valid range, unique to your network, and in the same subnet as your PC. You will need the following information before you set up the unit as described in Assign IP Address.

IP Address: _____

Subnet Mask: _____

Gateway: _____

CONNECT

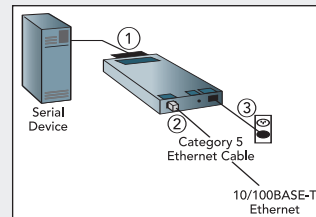
Complete the following steps in order. Refer to the numbers in the figure below.

1. Connect a serial device to your unit.
2. Connect an Ethernet cable to the RJ45 port.
3. Supply power to your unit using the power supply that was included in the packaging.

Note: The required input voltage is 9-30 VDC (center +) or 9-24 VAC (1.5W maximum power required).

4. Supply power to the serial device.

Ethernet, Power, and Serial Connections



INSTALL THE DEVICEINSTALLER GUI

1. Insert the CD into your CD-ROM drive.
If the CD does not launch automatically:
 - a) Click the **Start** button on the Task Bar and select **Run**.
 - b) Enter your CD drive letter, colon, backslash, **Launch.exe** (e.g., **E:\Launch.exe**).
2. Click the **DeviceInstaller** button.
3. Respond to the installation wizard prompts.

ASSIGN IP ADDRESS AND NETWORK CLASS

1. Click the **Start** button on the Task Bar and select **Programs > Lantronix > DeviceInstaller > DeviceInstaller**. The DeviceInstaller window displays.

Figure 1. DeviceInstaller Window




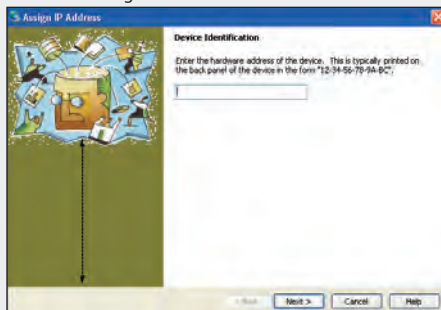
2. Click the **IP** icon . The Device Identification window displays.

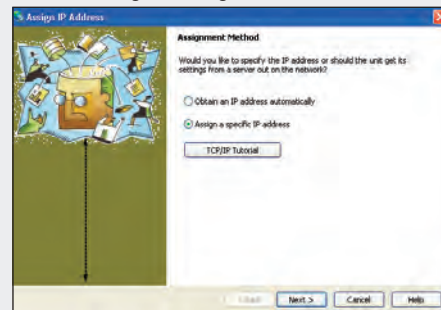
Figure 2. Device Identification



ASSIGN IP ADDRESS CONTINUED

3. Enter the hardware or Ethernet address of the device. The address is on the label on the underside of the unit.
4. Select **Assign a specific IP address** to assign a static IP address to the device, or select **Obtain an IP address automatically** to enable BOOTP, DHCP, or Auto IP on the device. Click **Next**.

Figure 3. Assignment Method



ASSIGN IP ADDRESS CONTINUED

Figure 4. IP Settings

5. Enter the IP address, Subnet mask, and Gateway being assigned to the device in XXX.XXX.XXX.XXX format. Click **Next**.

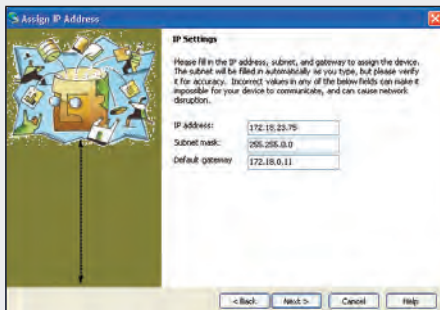
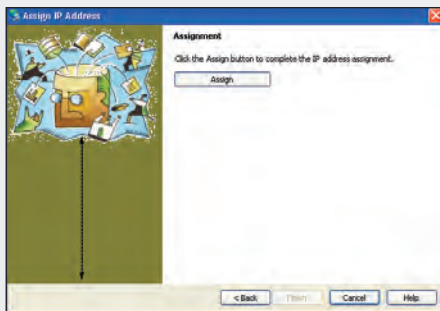
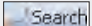


Figure 5. Assignment

6. Click the **Assign** button to finalize the IP assignment.



ADDING THE UNIT TO THE DEVICE LIST

Now add the unit to the list of similar Lantronix devices on the network so that you can manage and configure it. To perform this step, click the **Search** icon . DeviceInstaller locates the unit and adds it to the list.

CONFIGURATION

Once the SDS is in the device list, it can be configured.

1. Double-click the unit in the list. Details about the unit display.
2. Select one of the following tabs:



Note: For details about configuration settings, see the SDS User Guide.

LEDS/TROUBLESHOOT

SDS1101 contains the following LEDs:

- Power
- 10/100 Mb Link
- 10/100 Activity
- Diagnostics
- Status Channel 1

Simultaneously lit red and green LEDs means something is wrong. If the red LED is lit or blinking, count the number of times the green LED blinks between its pauses. The following table explains the LED functions.

SDS1101 SERIAL LEDES**MEANING**

10/100 Mb Link steady green	Valid network connection
10/100 Activity blinking	Network packets transmitting and receiving
Diagnostic steady red and status blinking green	3 blinks = Network controller error 4 blinks = EEPROM checksum error 5 blinks = Duplicate IP address on network
Diagnostic blinking red and Status blinking green	5 blinks = No DHCP response
Status steady green	Serial port not connected to network
Status blinking green	Serial port connected to network

LEDS/TROUBLESHOOT

SDS2101 contains the following LEDs:

- Power/Diagnostic
- RX Serial 1
- TX Serial 1
- RX Serial 2
- TX Serial 2

Simultaneously lit Diagnostic red and Serial green LEDs means something is wrong. If the Diagnostic red LED is lit or blinking, count the number of times the Serial green LED blinks between its pauses. The following table explains the LED functions.

SDS2101 SERIAL LEDES	MEANING
Diagnostic steady red and status blinking green	<p>3 blinks = Network controller error</p> <p>4 blinks = EEPROM checksum error</p> <p>5 blinks = Duplicate IP address on network</p>
Diagnostic blinking red and Serial blinking green	5 blinks = No DHCP response
Diagnostic blinking red and Serial blinking green for 2 secs, off for 2 secs	Setup menu active

CONTACT

For questions and technical support, please check our online knowledge base at **www.lantronix.com/support**.

Lantronix
 15353 Barranca Parkway, Irvine, CA 92618, USA
 Phone:(949) 453-3990 or Fax: (949) 453-3995
www.lantronix.com