



SCS1600/3200 Secure Console Servers



SCS1600/3200 Quick Start Guide



SCS1600/3200 Secure Console Servers

SCS1600/3200 QUICK START CONTENTS

System Overview	2
What's in the Box	3
IP Addressing	4
Connect	4
Pinout Assignments	5
Optional Accessory Cables	5
Assign IP	6
Configure	7-9
Troubleshoot	10
Contact Information	11

SYSTEM OVERVIEW

The SCS family of Secure Console Servers enables IT professionals to remotely and securely configure and administer serial-equipped devices.

The SCS1600 and SCS3200 models are distinguished by the number of high-speed asynchronous RJ45 serial ports they have. The SCS1600 has 16 serial ports and the SCS3200 has 32 serial ports that connect to the following kinds of devices:

- Servers
- Hubs
- Routers
- Telcom switches
- UPS systems
- PBX systems

Both SCS models have an AUI connector and a UTP (10Base-T, 100Base-TX) port for Ethernet connections. Both support baud rates between 300 and 230, 400 bits per second.

Both SCS models provide an In-Band and Out-of-Band management feature. In-Band lets you manage your equipment over the network from virtually anywhere using familiar tools like Telnet. Out-of-Band allows dial-in access through a modem. Plus, the SCS ensures data integrity through its authentication and authorization features.

WHAT'S IN THE BOX

In addition to the SCS, the box contains the following items:

Part #	Component Description
SCS1600	
--	Documentation CD-ROM and Quick Start Guide
083-000	Rack mount brackets with screws
500-103	Cable: 6' RJ45 to DB9 Female (Connect to DTE Device)
500-041	US power cord
500-119	European power cord
500-120	UK power cord
SCS3200	
--	Documentation CD-ROM and Quick Start Guide
083-007	Rack mount brackets with screws
500-103	Cable: 6' RJ45 to DB9 Female (Connect to DTE Device)
500-041	US power cord
500-119	European power cord
500-120	UK power cord

IP ADDRESSING

Your unit must have a unique IP address on your network.

The systems administrator generally provides the IP address. The IP address must be within a valid range, unique to your network, and in the same subnet as your PC. You'll need the following information before you set up the unit. (See Assign IP.)

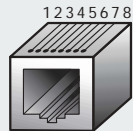
IP Address _____
Subnet Mask: _____

CONNECT

- 1) Mount or place the SCS in a secured room.
- 2) Connect serial devices to the serial ports.
- 3) Connect your network to the SCS (via one of its Ethernet ports)
- 4) Connect the power cord to a power outlet.
- 5) Wait about 30 seconds.
- 6) Confirm the following:
 - a) OK LED blinks green
 - b) Link LED glows green
- 7) Confirm that the 100 LED glows green if there is a 100Mb connection on the Ethernet port.

PINOUT ASSIGNMENTS

RJ45 SERIAL PIN ASSIGNMENTS



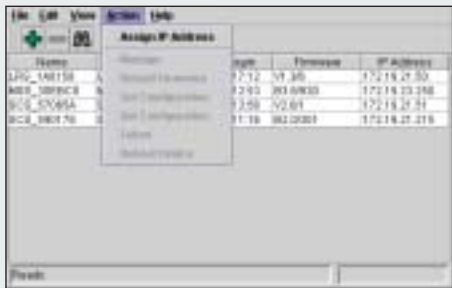
- | | |
|---|--------------|
| 1 | RTS
(out) |
| 2 | DTR
(out) |
| 3 | TX+
(out) |
| 4 | TX- |
| 5 | RX- |
| 6 | RX+
(in) |
| 7 | DSR
(in) |
| 8 | CTS
(in) |

OPTIONAL ACCESSORY CABLES

500-101	Cable: 6' RJ45 to DB9 Male (Connect to DCE Device)
500-102	Cable: 6' RJ45 to DB25 Male (Connect to DCE Device)
500-103	Cable: 6' RJ45 to DB9 Female (Connect to DTE Device)
500-104	Cable: 6' RJ45 to DB25 Female (Connect to DTE Device)

ASSIGN IP

- 1) Open EZWebCon on the CD-ROM.



EZWebCon HOME PAGE

Note: The EZWebCon wizard walks you through the process of assigning an IP. The **Next** button at the bottom of each EZWebCon screen advances you to the next step in the process.

- 2) Click **Action → Assign IP Address**.
- 3) Select the MAC address of your SCS device and click **Next**.
- 4) Select **Assign Specific IP** and click **Next**.
- 5) Type your IP Address.
- 6) Confirm the Subnet Mask Address.
- 7) For **Gateway**, select **None**.
- 8) Click **Next**.
- 9) Click the **Assign IP** button.
- 10) Click the **Done** button.

Note: Your device name and IP address should be listed in the EZWebCon window. If it is not, minimize and then restore the window.

CONFIGURE

- 1) In the EZWebCon window, click the device name you wish to configure.
- 2) Click **Action → Manage**.
Note: Your Web browser opens.
- 3) Enter login username, **login**, and password, **access**.
- 4) Click the **Login** button. The Server Configuration window displays.

SERVER CONFIGURATION

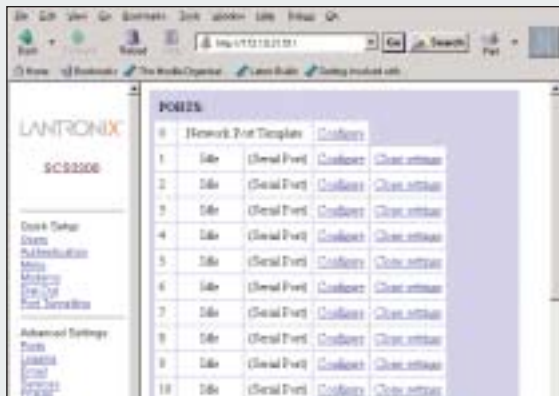


Note: When you click one of the headings listed on the left, you are prompted to enter the privileged username, **root**, and password, **system**. Once in, you should change this password, **system**, and the login password, **access**, to more secure passwords.

CONFIGURE (CONTINUED)

- 5) Configure a group of settings:
 - a) Select a link from the left navigation column, for example, **Ports**.
 - b) Enter the username, **root**, and the password, **system**. If a “remember password” popup window displays, select **No** and re-enter the password if necessary.
 - c) Confirm that a window similar to this displays:

PORT PROPERTIES PAGE



- 6) Click the **Configure** link for the port you want to configure.

- 7) Confirm that the following screen displays:

SERIAL PORT SETTINGS PAGE



- 8) Configure the port settings and click the **Update Port Settings** button at the bottom of the window when finished.
- 9) Repeat step 5 for the other groups of settings.
- 10) To close the active sessions and implement the changes, power cycle to reboot.

TROUBLESHOOT

LEDs on the front of the SCS indicate Ethernet and serial activity. The significance of these LEDs is explained in the following table:

LEDS	MEANING
Activity	Network transmissions
OK	SCS functional when blinking slowly
100	Valid 100Base-T connection
Link	Valid 10/100Base-T connection
Power	SCS energized

CONTACT INFORMATION

For questions and technical support, please check our online knowledge base at www.lantronix.com/support

If you need additional help call us at:

(800) 422-7044 Domestic
(949) 453-7198 International
(949) 450-7226 Fax

Lantronix

15353 Barranca Parkway, Irvine, CA 92618, USA

Phone: (949) 453-3990 • Fax: (949) 453-3995 • www.lantronix.com