



SCS100/200/400 Secure Console Servers



SCS100/200/400 Quick Start Guide



SCS100/200/400 Secure Console Servers

LANTRONIX®

SCS100/200/400 QUICK START CONTENTS

System Overview	2
What's in the Box	3
Pinouts	4
IP Addressing	7
Connect	7
Assign IP	8
Configure	9
Troubleshoot	12
Contact Information	13

Quick Start Guide SCS100/200/400

SYSTEM OVERVIEW

The SCS family of Secure Console Servers enables IT professionals to remotely and securely configure and administer serial-equipped devices.

The SCS connects to the following kinds of devices:

- Servers
- Hubs
- Routers
- Telecom switches
- UPS systems
- PBX systems

The SCS provides an In-Band and Out-of-Band management feature. In-Band lets you manage your equipment over the network from virtually anywhere using familiar tools like Telnet. Out-of-Band allows dial-in access through a modem. Plus, the SCS ensures data integrity through its authentication and authorization features.

The SCS is equipped with high-speed asynchronous serial ports, supporting baud rates between 300 and 230.4K bits per second, and a 10/100 Ethernet port. In addition, the SCS200 has one PC card slot, and the SCS400 has two.

This Quick Start guide explains how to connect, configure, and troubleshoot your unit. For more detailed information and alternative configuration methods, refer to the User Guide and Reference Manual on the CD ROM supplied with this product.

WHAT'S IN THE BOX

In addition to the SCS, the box contains the following items:

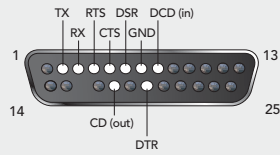
Part #	Component Description
SCS100	
--	Documentation CD-ROM and Quick Start Guide
520-036	For the SCS100-11, power cube with cord
520-062	For the SCS100-12, power cube with international adapters
SCS200	
--	Documentation CD-ROM and Quick Start Guide
520-061	Power cube with cord
SCS400	
--	Documentation CD-ROM and Quick Start Guide
520-048	For the SCS400-01, power supply
500-041	For the SCS400-01, power cord
520-049	For the SCS400-02, power supply with international power cords

Quick Start Guide SCS100/200/400

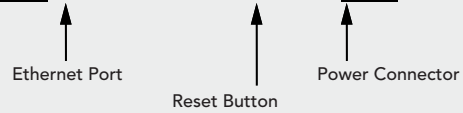
SCS100 FRONT



DB25 SERIAL CONNECTOR (DTE DB25 Male)



SCS100 REAR



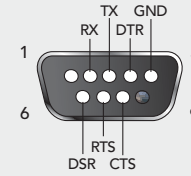
SCS200 FRONT



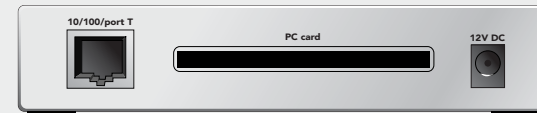
DB25 SERIAL CONNECTOR (DTE DB25 Male)



DB9 RS-232 SERIAL CONNECTOR

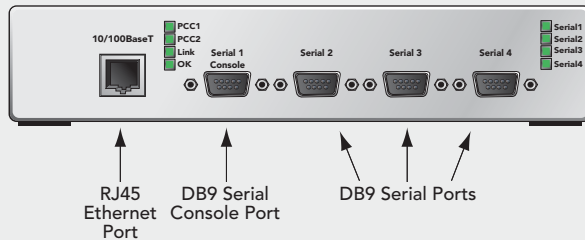


SCS200 REAR

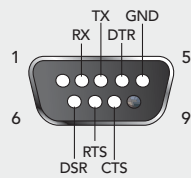


Quick Start Guide SCS100/200/400

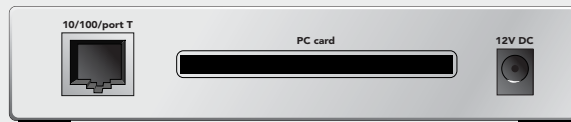
SCS400 FRONT



DB9 RS-232 SERIAL CONNECTOR



SCS400 SIDE



IP ADDRESSING

Your unit must have a unique IP address on your network.

The systems administrator generally provides the IP address. The IP address must be within a valid range, unique to your network, and in the same subnet as your PC. You'll need the following information before you set up the unit. (See Assign IP.)

IP Address: _____
Subnet Mask: _____

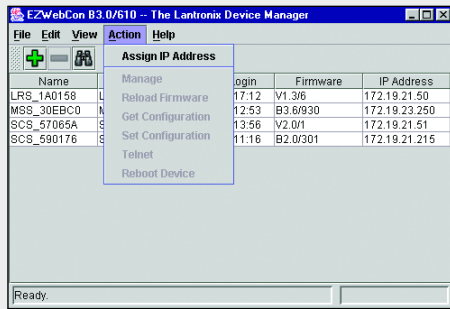
CONNECT

- 1) Mount or place the SCS in a secured room.
- 2) Connect serial devices to the serial ports.
- 3) Connect your network to the SCS (via one of its Ethernet ports or the PCMCIA slot, if applicable).
- 4) Connect the power supply to the SCS.
- 5) Wait about 30 seconds.
- 6) Confirm the following:
 - a) OK LED blinks green
 - b) Link LED glows green
- 7) If the SCS is connected to the network via the PC card slot or Ethernet, confirm the following:
 - a) PC Card LED glows green
 - b) 100 LED glows green if there is a 100Mb connection

Quick Start Guide
SCS100/200/400

ASSIGN IP

- 1) Open EZWebCon on the CD-ROM.



EZWebCon HOME PAGE

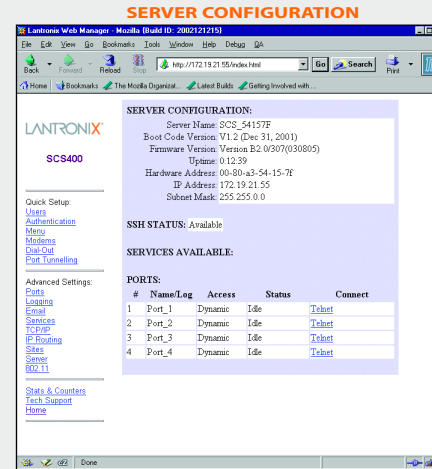
Note: The EZWebCon wizard walks you through the process of assigning an IP. The **Next** button at the bottom of each EZWebCon screen advances you to the next step in the process.

- 2) Click **Action → Assign IP Address**.
- 3) Select the MAC address of your SCS device and click **Next**.
- 4) Select **Assign Specific IP** and click **Next**.
- 5) Type your IP Address.
- 6) Confirm the Subnet Mask Address.
- 7) For **Gateway**, select **None**.
- 8) Click **Next**.
- 9) Click the **Assign IP** button.
- 10) Click the **Done** button.

Note: Your device name and IP address should be listed in the EZWebCon window. If it is not, minimize and then restore the window.

CONFIGURE

- 1) In the EZWebCon window, click the device name you wish to configure.
- 2) Click **Action → Manage**.
Note: Your Web browser opens.
- 3) Type the login username, **login** and password, **access**.
- 4) Click the **Login** button. The Server Configuration window displays.

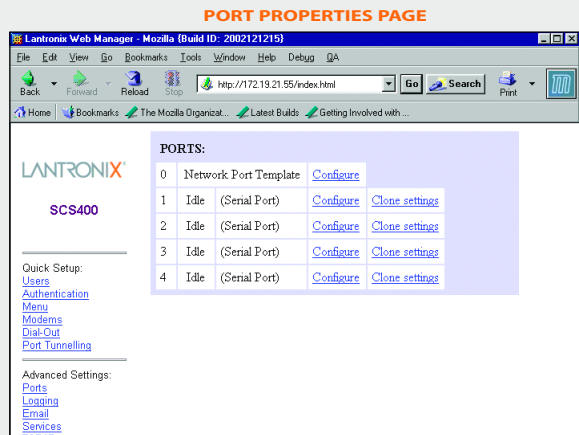


Note: When you click one of the headings listed on the left, you are prompted to enter the privileged username, **root**, and password, **system**. Once in, you should change this password, **system**, and the login password, **access** to more secure passwords.

Quick Start Guide
SCS100/200/400

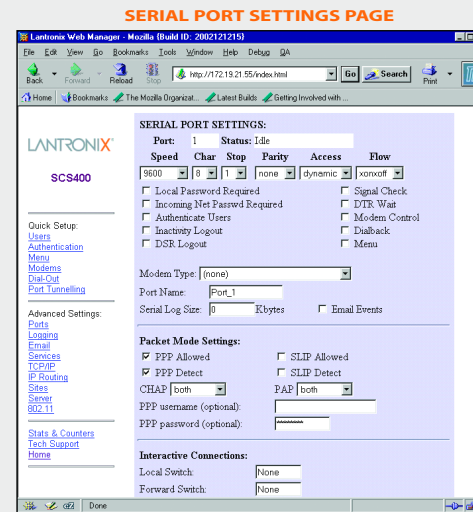
CONFIGURE (CONT.)

- 5) Configure a group of settings:
 - a) Select a link from the left navigation column, for example, **Ports**.
 - b) Enter the username, **root**, and the password, **system**. If a "remember password" pop up window displays, select **No** and re-enter the password if necessary.
 - c) Confirm that a window similar to this displays:



- 6) Click the **Configure** link for the port you want to configure.

- 7) Confirm that the following screen displays:



- 8) Configure the port settings and click the **Update Port Settings** button at the bottom of the window when finished.
- 9) Repeat step 5 for the other groups of settings.
- 10) To close the active sessions and implement the changes, power cycle to reboot.

Quick Start Guide
SCS100/200/400

TROUBLESHOOT

LEDs on the top of the SCS indicate Ethernet and serial activity. The significance of these LEDs is explained in the following table:

LEDS	COLOR	MEANING
Serial	green blinking	Serial transmissions
OK	amber/red blinking	Not booting
OK	green blinking	SCS functional
PC Card	green	Card functioning
PC Card	amber blinking	Card recognized
PC Card	red blinking	Card not recognized
100	green	100Base-T valid
Link	green	10/100Base-T valid

CONTACT INFORMATION

For questions and technical support, please check our online knowledge base at www.lantronix.com/support

If you need additional help call us at:
(800) 422-7044 Domestic
(949) 453-7198 International
(949) 450-7226 Fax

Lantronix
15353 Barranca Parkway, Irvine, CA 92618, USA
Phone: (949) 453-3990 • Fax: (949) 453-3995 • www.lantronix.com