



mPACK Command Reference M110 Series Cellular Modem

Part Number PMD-00035
Revision D February 2024

Intellectual Property

© 2024 Lantronix, Inc. All rights reserved. No part of the contents of this publication may be transmitted or reproduced in any form or by any means without the written permission of Lantronix.

Lantronix is a registered trademark of Lantronix, Inc. in the United States and other countries.

Patented: www.lantronix.com/legal/patents/. Additional patents pending.

Windows and *Internet Explorer* are registered trademarks of Microsoft Corporation. *Firefox* is a registered trademark of the Mozilla Foundation. *Chrome* is a trademark of Google Inc. All other trademarks and trade names are the property of their respective holders.

Warranty

For details on the Lantronix warranty policy, please go to our web site at www.lantronix.com/support/warranty/

Contacts

Lantronix, Inc.

48 Discovery, Suite 250
Irvine, CA 92618, USA
Toll Free: 800-526-8766
Phone: 949-453-3990
Fax: 949-453-3995

Technical Support

Online: www.lantronix.com/technical-support/

Sales Offices

For a current list of our domestic and international sales offices, go to the Lantronix web site at www.lantronix.com/about-us/contact/

Disclaimer

All information contained herein is provided "AS IS." Lantronix undertakes no obligation to update the information in this publication. Lantronix does not make, and specifically disclaims, all warranties of any kind (express, implied, or otherwise) regarding title, non-infringement, fitness, quality, accuracy, completeness, usefulness, suitability or performance of the information provided herein. Lantronix shall have no liability whatsoever to any user for any damages, losses and causes of action (whether in contract or in tort or otherwise) in connection with the user's access or usage of any of the information or content contained herein. The information and specifications contained in this document are subject to change without notice.

Open Source Software

Some applications are Open Source software licensed under the Berkeley Software Distribution (BSD) license, the GNU General Public License (GPL) as published by the Free Software Foundation (FSF), or the Python Software Foundation (PSF) License Agreement for Python 2.7.3 (Python License). Lantronix grants you no right to receive source code to the Open Source software; however, in some cases, rights and access to source code for certain

Open Source software may be available directly from Lantronix' licensors. Your use of each Open Source component or software is subject to the terms of the applicable license. The BSD license is available at <http://opensource.org/licenses>. The GNU General Public License is available at <http://www.gnu.org/licenses/>. The Python License is available at <http://cmpt165.csil.sfu.ca/Python-Docs/license.html>. Your use of each Open Source component or software is subject to the terms of the applicable license.

OPEN SOURCE SOFTWARE IS DISTRIBUTED WITHOUT ANY WARRANTY, INCLUDING ANY IMPLIED WARRANTY OF MERCHANTABILITY OR FITNESS FOR A PARTICULAR PURPOSE. SEE THE APPLICABLE LICENSE AGREEMENT FOR ADDITIONAL INFORMATION.

You may request a list of the open source components and the licenses that apply to them. Contact your regional Lantronix sales associate. www.lantronix.com/about-us/contact/

Revision History

Date	Rev.	Comments
August 2018	1.1	Initial Release.
November 2018	1.2	Added commands: AT#USBDENB
March 2019	1.3	Added commands: AT#PASS, AT#
September 2019	A	Added Lantronix part number, contact information, and branding
September 2022	B	Updated section 2.6 Factory Reset Updated command: AT#INFO Added commands: AT#USBMODE, AT#PSDURC, AT#IOFTPPARA. Removed D2Sphere commands
December 2023	C	<ul style="list-style-type: none">Added support to M114 CAT-1 BISUpdated section 2.3 Default SettingsUpdated section 2.4 Basic Command SyntaxAdded commands AT#DEVINFO, AT#MODERESET, AT#DBGCOM, AT#AUTORTC, AT#EVENTSMSUpdated commands AT#INFO, AT#MRST, AT#SERIAL, AT#HFLW, AT#SETRTC, AT#VAMODE, AT#IPTCP, AT#IPUDP, AT#AUOPT, AT#WEBUPDATE, AT#UPDATE, AT#TRANSMODE, AT#MLOC, AT#TRANSMODE, AT#IPCELLULAR, AT#IPCONNECT, and AT#SCHOST
February 2024	D	<ul style="list-style-type: none">Added chapter 12 PercepXion User Commands which includes the commands AT#PXNENB, AT#PXNURL, AT#PXNDVNAME, AT#PXNDVDESC, AT#PXNSTATEUPDATEINT, and AT#PXNCONTCHECKINTUpdated topic 2.1 Modes of OperationUpdated topic 2.4 Basic Command SyntaxUpdated commands AT#DEVINFO, AT#INFO, AT#MRST, AT#NWRST, AT#USBATCOM, AT#RDIO, AT#IPCONNECT, AT#IPPING, and AT#OTCP

For the latest revision of this product document, please check our online documentation at www.lantronix.com/support/documentation.

Contents

1	Introduction	7
1.1	Safety Precautions	7
1.1.1	General Precautions	7
1.1.2	Protecting your modem	7
1.2	M110 series supported by mPACK	7
2	Basic Operation	8
2.1	Modes of Operation	8
2.2	Getting Started	8
2.3	Default Settings	8
2.4	Basic Command Syntax	9
2.5	LED Status Indicator	9
2.6	Factory Reset	9
3	Administration Configuration	10
3.1	AT#INFO	10
3.2	AT#DEVINFO	11
3.3	AT#CONFIGDEL	11
3.4	AT#RESET	12
3.5	AT#MRST	12
3.6	AT#NWRST	12
3.7	AT#MATSCR	13
3.8	AT#USBATCOM	14
3.9	AT#PASS	14
3.10	AT#STRUPMSG	15
3.11	AT#MODERESET	16
3.12	AT#USBMODE	16
3.13	AT#DBGCOM	16
4	Hardware Commands	18
4.1	AT#SERIAL	18
4.2	AT#HFLW	18
4.3	AT#SETRTC	19
4.4	AT#AUTORTC	20
4.5	AT#GETRTC	20
4.6	AT#VIO	21
4.7	AT#VAMODE	21
4.8	AT#RDIO	22
4.9	AT#OPSET	23
5	Last Gasp Commands	24
5.1	AT#LGPARA	24
5.2	AT#LGMSG	24

6	Cellular Commands	26
6.1	AT#IPCELLULAR _____	26
6.2	AT#IPCONNECT _____	27
6.3	AT#GETBRIP _____	27
6.4	AT#IPPING _____	28
6.5	AT#PSDURC _____	28
7	System	30
7.1	AT#IPTCP _____	30
7.2	AT#IPUDP _____	30
7.3	AT#AUTOTCP _____	31
7.4	AT#AUTOUDP _____	32
7.5	AT#OTCP _____	32
7.6	AT#OUDP _____	33
7.7	AT#SCHOSt _____	33
7.8	AT#IPOPT _____	34
7.9	AT#AUOPT _____	35
7.10	AT#SERVAUTH _____	36
7.11	AT#MURC _____	37
7.12	AT#IOFTPPARA _____	37
8	Remote Control Commands	39
8.1	AT#SMSAT _____	39
8.2	AT#EVENTSMS _____	40
8.3	AT#TCPTERM _____	41
9	Firmware Update Commands	42
9.1	AT#WEBUPDATE _____	42
9.2	AT#UPDATE _____	42
10	I/O Triggering Commands	44
10.1	AT#DITRIG _____	44
10.2	AT#DITRIGENB _____	44
10.3	AT#MSGPER _____	45
10.4	AT#MSGSTR _____	45
10.5	AT#TRANSMODE _____	46
11	Location Commands	48
11.1	AT#MLOC _____	48
12	PercepXion User Commands	49
12.1	AT#PXNENB _____	49
12.2	AT#PXNURL _____	49
12.3	AT#PXNDVNAME _____	50
12.4	AT#PXNDVDESC _____	50
12.5	AT#PXNSTATEUPDATEINT _____	51

12.6	AT#PXNCONTCHECKINT _____	51
13	Application Notes	53
13.1	Cellular Setup Example _____	53
13.2	AutoTCP Client Setup Example _____	53
13.3	AutoTCP Server Setup Example _____	54
13.4	Flow diagram of Auto TCP/UDP Connection _____	56
14	Troubleshooting	57
14.1	The modem's LED does not light _____	57
14.2	The modem's GREEN LED continues blinking after power up _____	57
14.3	The modem does not respond to the terminal program _____	57

1 Introduction

The aim of this document is to provide users of Lantronix M110 Modems running mPACK, a detailed description of the commands supported by mPACK and various configuration/operation modes in which M110 series Modems could be used.

1.1 Safety Precautions

1.1.1 General Precautions

- The modem generates radio frequency (RF) power. When using the modem, care must be taken on safety issues related to RF interference as well as regulations of RF equipment.
- Do not use the modem in aircraft, hospitals, petrol stations or in places where using GSM products is prohibited.
- Be sure that the modem will not be interfering with nearby equipment. For example: pacemakers or medical equipment. The antenna of the modem should be away from computers, office equipment, home appliances, etc...
- An external antenna must be connected to the modem for proper operation. Only used approved antennas with the modem. Please contact authorized dealer on finding an approved antenna.
- Always keep the antenna with minimum safety distance of 26.6 cm or more from human body.
- Do not put the antenna inside metallic box, containers, etc.

1.1.2 Protecting your modem

To ensure error-free usage, please install and operate your modem with care. Remember the following:

- Do not expose the modem to extreme conditions such as high humidity/temperatures, rain, direct sunlight, caustic/harsh chemicals, dust, or water.
- Do not try to disassemble or modify the modem. There is no user serviceable part inside and the warranty would be void.
- Do not drop, hit, or shake the modem. Do not use the modem under extreme vibrating condition.
- Do not pull the antenna or power supply cable. Please attach or detach by holding the connector.
- Connect the modem only according to the instruction manual. Failure to do it will void the warranty.

1.2 M110 series supported by mPACK

Please consult Lantronix sales for the most updated information.

Uplink / Downlink maximum data rates:

- 3G: 5.76 / 7.2 Mbps
- NB-IoT: 62.5 / 27.2 kbps
- LTE-M1: 375 / 375 kbps
- LTE cat. 1: 5 / 10 Mbps
- LTE cat. 1 bis: 5/10 Mbps

2 Basic Operation

2.1 Modes of Operation

M110 running mPACK can be operated in the following modes:

- PPP Dial up over RS232 (Linux and Windows)
- PPP Dial up over USB (Linux and Windows)
- Generic AT commands over RS232
- Generic AT commands over USB
- mPACK commands over RS232
- mPACK commands over USB

Note:

- **For Generic AT command over USB operation use either AT#USBATCOM or AT#USBMODE commands. For PPP dial over USB, use AT#USBMODE only**
- **PPP Dial up over USB is not available for M111 and M115 variants**

For M114 CAT-1 BIS:

- **For PPP dial-up over USB it is recommended to enable AT#USBMODE since AT/data transfer over serial could fail the dial-up session**
- **Flow control is must for all operations**

Thanks to the wide range of operating modes, mPACK transforms the M110 Modem into a versatile modem which can provide data connectivity to serial devices in almost any situation be it an Intelligent connected serial device with full TCP/IP stack capable of PPP connection or an intelligent connected serial device capable of sending commands but without a TCP/IP stack or be it a non-intelligent connected serial device only pumping out data on serial port.

In addition, a function of mPACK as listed below provides extra functionality and improves the robustness of the wireless connected system.

- Automatic and self-recovery TCP/UDP socket connection
- AT command driven TCP/UDP socket connection
- Ping Service
- Network Watchdog
- Input/output and Analog triggered AT command
- Remote AT command through SMS and TCP Terminal
- Remote program updating
- Socket data sending

2.2 Getting Started

Before putting the M110 in operation, it must be configured first. The configuration commands can be given to the modem over Serial port or by sending an SMS.

To send command over the serial port, please connect M110 to a computer over Serial port. Use standard software available on a Windows PC (e.g., hyper terminal) to send serial commands to M110. SMS would have to be sent to the mobile number corresponding to the SIM card inserted in M110 device. In either case, the commands are mPACK AT commands as described below.

2.3 Default Settings

The default settings of the UART and USB ports are as follows:

- Baud rate: 115200

- Character Framing: 8
- Parity: None
- Stop Bit: 1
- Flow Control:
 - None
 - Hardware (For M114 CAT-1 BIS)

2.4 Basic Command Syntax

All commands starting with AT+ entailed in documents:

- u-blox-ATCommands_Manual_(UBX-13002752) for M111, M114, M115
- SARA-N2_ATCommandsManual_UBX-16014887 for M112, and
- SARA-R4_ATCommandsManual_(UBX-17003787) for M113
- Cinterion – ELS62W_ATCommandsManual_(ELS62-W_ATC_V01100) for M114 CAT-1 BIS

All mPACK commands start with AT# are the only ones covered in this document, e.g.

AT#INFO

Error codes for uBlox commands are as described in the uBlox AT command manual.

Error codes for Cinterion commands are as described in the Cinterion AT command manual.

Error codes for mPACK commands are as follows:

- “ERROR BAD PARAMETER” for wrong parameters or out of range values
- “ERROR UNKNOWN COMMAND” for wrong command syntax

2.5 LED Status Indicator

The LED will indicate different status of the modem:

- For Orange LED:
 - OFF: No cellular connection
 - ON: Cellular connection
 - Blinking: Data transfer
- For Green LED:
 - OFF: No power
 - Slow blink: No signal or CSQ < 4,99
 - Fast blink: Bad CSQ < 9
 - ON: Good signal or CSQ > 10

2.6 Factory Reset

To factory reset the device, hold the reset pin for 15 to 20 seconds.

- Initially both LEDs are off
- After 5 seconds the green LED will go on (and the orange LED remains off)
- After 15 seconds the orange LED will go on (and the green LED goes off)

Note: If the time elapsed is more than 20 seconds, the device will reboot without doing factory reset.

3 Administration Configuration

3.1 AT#INFO

Return device information

ALLOWED: exec-state-info

AT#INFO

exec:

```
AT#INFO
#HW_version: M110Series-01V
#Cellular_Module: u-blox-SARA-G350-08.90
#Bootcode_version: mPack_boot_1.0_rc1_b2017112301
#SW_build: mpack_m110_2.8.0.0_2021121301
#FLASH_ID: 0xef,0x4015
```

OK

exec: (For M114 CAT-1 BIS)

```
AT#INFO
#HW_version: M114BISSeries-01V
#Cellular_Module: Thales-ELS62-W
#Bootcode_version: mPACK-boot-4.0
#SW_build: mpack-m114-1.0.0.0R26_2023112001
```

OK

state:

```
AT#INFO?
#HW_version: M110Series-01V
#Cellular_Module: u-blox-SARA-G350-08.90
#Bootcode_version: mPack_boot_1.0_rc1_b2017112301
#SW_build: mpack_m110_2.8.0.0_2021121301
#FLASH_ID: 0xef,0x4015
```

OK

state: (For M114 CAT-1 BIS)

```
AT#INFO?
#HW_version: M114BISSeries-01V
#Cellular_Module: Thales-ELS62-W
#Bootcode_version: mPACK-boot-4.0
#SW_build: mpack-m114-1.1.0.0R6_2024012901
```

OK

info:

```
AT#INFO=?
```

OK

3.2 AT#DEVINFO

Command to return device information

ALLOWED: exec-state-info

Note: This command is applicable only to M114 CAT-1 BIS.

AT#DEVINFO

exec:

```
AT#DEVINFO
#HW_version: M114BISSeries-01V
#Cellular_Module: Thales-ELS62-W
#SW_build: mpack-m114-1.0.0.0R24
#IMEI_NUMBER: 359077321285426
#Device_ID: 00204A0FEC6QQFU63XCPOSOJOVGLEUAT
#Serial_ID: 0081A300007E
#Product_ID: Y8

OK
```

state:

```
AT#DEVINFO?
#HW_version: M114BISSeries-01V
#Cellular_Module: Thales-ELS62-W
#SW_build: mpack-m114-1.0.0.0R24
#IMEI_NUMBER: 359077321285426
#Device_ID: 00204A0FEC6QQFU63XCPOSOJOVGLEUAT
#Serial_ID: 0081A300007E
#Product_ID: Y8

OK
```

info:

```
AT#DEVINFO=?

OK
```

3.3 AT#CONFIGDEL

Factory reset device configuration

ALLOWED: exec

Note: Device restarts after this command is executed.

AT#CONFIGDEL

exec:

```
AT#CONFIGDEL

OK
```

3.4 AT#RESET

Software reset the M11X device

ALLOWED: exec

AT#RESET

exec:

```
AT#RESET
OK
```

3.5 AT#MRST

This command resets the M11x modem after a programmed delay. The M11x modem will reset cyclically until this mode is disabled.

ALLOWED: exec-state-info

AT#MRST=(mode), (delay)

- mode: timer reset mode
 - 0: disabled
 - 1: enabled
- delay: time set to reset the embedded modem
 - range: "000:01" - "167:59" (format hhh:mm)
- remaining time:
 - range: "000:01"- "167:59" (format hhh:mm)

exec:

```
AT#MRST=1,"100:00"
OK
```

state: (When this feature is enabled, the state timer is updated in duration of seconds)

```
AT#MRST?
#MRST: 1,"100:00","099:59"

OK
```

info:

```
AT#MRST=?
#MRST: (0-1),(000:01-167:59)

OK
```

3.6 AT#NWRST

Controls reset of the modem in case of network failure conditions

ALLOWED: exec-state-info

Note: Network failure conditions are defined to be cases where registration to cellular/ data network fails, or bad signal quality. Each time only one of the above network conditions is checked.

AT#NWRST= (option), (timer), (counter)

- option: 0 to disable, 1 to enable, 2 to configure. Default disabled
- timer: 5-120 second (about 2 minutes) interval at which network conditions are checked (different network conditions are checked each time). Default 5
- counter: 10-1000; count of consecutive network failures, after which the device will reset if option = 1. Default 10

exec:

```
AT#NWRST=2,10,18
OK
```

state:

```
AT#NWRST?
#NWRST: 0,10,18

OK
```

info:

```
AT#NWRST=?
#NWRST: (0-2),(5-120),(10-1000)

OK
```

3.7 AT#MATSCR

Enters a list of modem-internal AT commands (cannot be mPACK AT# commands) that will be executed at each start up

ALLOWED: exec-state-info

AT#MATSCR=(list_of_commands)

- list of commands: one or more uBlox-AT commands, separated by ';' as typed (i.e., "" are OK)

exec:

```
AT#MATSCR
> (a list of uBlox-AT commands, separated by ';', terminated by ctrl-Z)
OK
```

state:

```
AT#MATSCR?
#MATSCR: "(commands as entered, no formatting)"

OK
```

info:

```
AT#MATSCR=?
#MATSCR: (180)

OK
```

3.8 AT#USBATCOM

Enables/Disables cellular AT command over USB.

ALLOWED: exec-state-info

Note:

- *When turning on, sometimes it depends on behavior of the device driver on the computer whether the port can be found. If not found, the user needs to detach and re-attach the USB port*
- *This command is not mandatory for M114 CAT-1 BIS. To get URC user must enable this command*

AT#USBATCOM=(flag)

flag: 0 to disable cellular AT commands on the USB port (and allow cellular AT commands on the serial port); 1 to reverse the ports.

exec:

```
AT#USBATCOM=1
OK
```

state:

```
AT#USBATCOM?
#USBATCOM: 1

OK
```

info:

```
AT#USBATCOM =?
#USBATCOM: (0-1)

OK
```

3.9 AT#PASS

Enables/ Disables pass-through mode.

ALLOWED: exec-state-info

Note: This command applies to M113 variant only.

AT#PASS=(flag)

flag: 0 to disable pass through mode, 1 to enable. Default 0.

Note: All commands work only when pass-through mode is 0.

exec:

```
AT#PASS=1
OK
```

state:

```
AT#PASS?
#PASS: 0

OK
```

info:

```
AT#PASS=?
#PASS: (0-1)

OK
```

3.10 AT#STRUPMSG

Edits the startup message of mPACK software.

ALLOWED: exec-state-info

Note: The startup sequence of unsolicited response of the mPACK software is always: length:0 (startup message)

AT#STRUPMSG=(text)

text: text for the startup message, up to 60 printable ASCII characters. Note that there is always a startup message, and the default startup message is "READY", which can be selected using "*" as the text argument (and shown as "*" in state query).

exec:

```
AT#STRUPMSG="Hello"
OK
```

state:

```
AT#STRUPMSG?
#STRUPMSG: "Hello"

OK
```

info:

```
AT#STRUPMSG=?
#STRUPMSG: (60)

OK
```

3.11 AT#MODERESET

Enables user commands on UART when PPP dial up on serial is disconnected.

Allowed: exec

AT#MODERESET

exec:

```
AT#MODERESET
OK
```

3.12 AT#USBMODE

Enables/Disables USB port to switch directly between mPACK and cellular module.

ALLOWED: exec-state-info

Note: Use command AT#RESET or power reboot if changes are not observed on connected machine.

AT#USBMODE=(flag)

exec:

```
AT#USBMODE=1
OK
```

state:

```
AT#USBMODE?
#USBMODE: 0

OK
```

info:

```
AT#USBMODE=?
#USBMODE: (0-1)

OK
```

3.13 AT#DBGCOM

To shift debug logs from UART to USB and vice-versa.

ALLOWED: exec-state-info

AT#DBGCOM=(mode)

mode: 1 to enable, 0 to disable.

exec:

```
AT#DBGCOM=1
OK
```


state:

```
AT#DBGCOM?  
#DBGCOM: 1  
  
OK
```

info:

```
AT#DBGCOM=?  
#DBGCOM: (0-1)  
  
OK
```

4 Hardware Commands

4.1 AT#SERIAL

Configure the user-side UART baud rate, character-framing, and flow control

ALLOWED: exec-state-info

Note:

- **Bauds 300, 600 are not supported.**
- **The character-framing of 7 data-bytes works with current configuration but is not reliable.**
- **Modem will reset if AT#SERIAL exec command is executed.**
- **For M114 CAT-1 BIS, disabling Hardware Flow Control will cause data loss.**

AT#SERIAL=(baud), (charFraming), (flowCtrl)

- Baud: one of (1200, 2400, 4800, 9600, 19200, 38400, 57600, 115200)
- charFraming: one of ("8N1", "8N2", "9O1", "9E1"). Refer to Note above.
- flowCtrl
 - 0: Disable
 - 1: Enable

exec:

```
AT#SERIAL=115200,"8N1",0
OK
```

state:

```
AT#SERIAL?
#SERIAL: 115200,"8N1",0
OK
```

info:

```
AT#SERIAL=?
#SERIAL: (1200,2400,4800,9600,19200,38400,57600,115200), ("8N1","8N2","9O1", "9E1"), (0-1)
OK
```

4.2 AT#HFLW

Enable or disable hardware flow control

ALLOWED: exec-state

Note: This command applies to M113 variant only.

AT#HFLW= option

- Option
 - 0: Disable flow control
 - 1: enable flow control

exec:

```
AT#HFLW=1
OK
```

state:

```
AT#HFLW?
#HFLW: 1

OK
```

info:

```
AT#HFLW=?
ERROR
```

4.3 AT#SETRTC

Set (or stop) the real time clock

ALLOWED: exec-state-info

AT#SETRTC=(op), (value1), (value2), (value3)

Note: This command is not supported by M114 CAT-1 BIS.

- Op:
 - 0 = enter time, (value1, value2, value3) = (hh:mm:ss)
 - 1 = enter date, (value1, value2, value3) = (YY:MM:DD)
 - 2 = start or stop the RTC clock
- value1:
 - hour if op is 0; year if op is 1;
 - 1 to enable RTC and 0 to disable RTC, if op is 2
- value2:
 - minute if op is 0; month if op is 1
- value3:
 - second if op is 0; day if op is 1

exec:

```
AT#SETRTC= 1,18,03,05
OK
```

state:

```
AT#SETRTC?
ERROR
```

info:

```
AT#SETRTC=?
#SETRTC: (0-2), ((0-23)/(0-99)), ((0-59)/(1-12)), ((0-59)/(1-31))

OK
```

4.4 AT#AUTORTC

Command to set source for real time clock

ALLOWED: exec-state-info

AT#AUTORTC=<mode>,<frequency>

- mode
 - 1: Manual (default)
 - 2: GSM
 - 3: GPS
 - 4: NTP
- frequency (seconds): 60-86400 (default 3600)

Note:

- ***GPS and NTP are not supported.***
- ***M114 CAT-1 BIS does not support Manual mode.***
- ***When mode is set to manual, frequency is ignored.***

exec:

```
AT#AUTORTC=1,0
OK
```

state:

```
AT#AUTORTC?
#AUTORTC: 1,0
OK
```

info:

```
AT#AUTORTC=?
#AUTORTC: (1-4), (60-86400)
OK
```

4.5 AT#GETRTC

Get the real time clock

ALLOWED: exec-state-info

AT#GETRTC

exec:

```
AT#GETRTC=2018/03/05,16:50:48
OK
```

state:

```
AT#GETRTC?
#GETRTC:2024/01/01,16:50:48
OK
```

info:

```
AT#GETRTC=?
ERROR
```

4.6 AT#VIO

Command to configure Versatile I/O

ALLOWED: exec-state-info

AT#VIO= (channel), (mode)

- Channel: 1 or 2
- Mode:
 - "DI": Digital input
 - "DO": Digital output
 - "AN": Analogue input

exec:

```
AT#VIO=2,"DO"
OK
```

state:

```
AT#VIO?
#VIO: 1,"AN"
#VIO: 2,"DO"
OK
```

info:

```
AT#VIO=?
#VIO: (1,2), ("DI","AN","DO")
OK
```

4.7 AT#VAMODE

Command to set current or voltage mode

ALLOWED: exec-state-info

AT#VAMODE= (channel), (AN_mode)

- Channel: 1 or 2
- AN_mode: Mode within Analogue

- 0: Voltage mode
- 1: Current mode

Note: Current mode not supported by M113, M114, and M114 CAT-1 BIS devices.

exec:

```
// Set channel 1 to current mode
AT#VAMODE=1,1
OK
```

state:

```
AT#VAMODE?
#VAMODE: 1,0
#VAMODE: 2,0
OK
```

info:

```
AT#VAMODE=?
#VAMODE: (1-2), (0-1)
OK
```

4.8 AT#RDIO

Command to read versatile I/O status

ALLOWED: exec-info

AT#RDIO= (channel)

- Channel: 1 or 2
- Mode:
 - "DI": Digital input
 - "DO": Digital output
 - "AN": Analogue input
- Status:
 - For mode= "DI" or "DO": 0 or 1
 - For mode= "AN": voltage in mV or current in mA (which one depends on AT#VAMODE)

exec:

```
AT#RDIO=1,"AN"
#RDIO: 1, "AN", 0.000000V
OK
```

state:

```
AT#RDIO?
ERROR
```

info:

```
AT#RDIO=?  
#RDIO: (1-2)  
  
OK
```

4.9 AT#OPSET

To control versatile, I/O in output mode

ALLOWED: exec-info

Note:

- *On Power up the device output state will be reset.*
- *Before setting the output value, the channel needs to be configured as digital output first*

AT#OPSET= (channel), (status)

- Channel: 1 or 2
- Status: 0 or 1

exec:

```
AT#OPSET=1,1  
OK
```

state:

```
AT#OPSET?  
ERROR
```

info:

```
AT#OPSET=?  
#OPSET: (1-2), (0-1)  
  
OK
```

5 Last Gasp Commands

Note:

- **Last Gasp is an optional feature on M110 series of products. Please consult Lantronix sales for availability.**
- **Not applicable to M114 CAT-1 BIS device.**

5.1 AT#LGPARA

Last gasp SMS configuration

ALLOWED: exec-state-info

AT#LGPARA= (mode), (argument)

- Mode:
 - 0: Disable all last gasp SMS
 - 1: Enable last gasp SMS. Second, argument specifies which situation applies.
 - 2: Edit the mobile number
- Argument:
 - For mode=1: 1 to enable power-down SMS, 2 to enable power-up SMS, 3 to enable both.
 - For mode=2: Mobile number to which Last Gasp is sent

exec:

```
AT#LGPARA=2,"+919876543210"
OK
AT#LGPARA=1,3
OK
```

state:

```
AT#LGPARA?
#LGPARA: 3,"+919876543210"
OK
```

info:

```
AT#LGPARA=?
#LGPARA: (0-2),(5-29)
OK
```

5.2 AT#LGMSG

Last gasp SMS message content configuration

ALLOWED: exec-state-info

- opt:
 - 1: Configure last gasp SMS for power down

- 2: Configure last gasp SMS for power up
- arg: for message content of the SMS, up to 60 printable ASCII characters

exec:

```
AT#LGMSG=2,"M110 modem powered up"  
OK
```

state:

```
AT#LGMSG?  
#LGMSG: 1,"M110 modem powered down"  
#LGMSG: 2,"M110 modem powered up"  
  
OK
```

info:

```
AT#LGMSG=?  
#LGMSG: (1-2),(60)  
  
OK
```

6 Cellular Commands

6.1 AT#IPCELLULAR

Configure cellular parameters for both the SIM slots: APN, username, and password.

ALLOWED: exec-state-info

AT#IPCELLULAR= (slot), (APN) [(username), (password) [(cid)], (Auth),(IPType)]

Note: IPV6 mode is available in selected models only.

- slot: SIM slot (NOTE: slot 2 is only available on selected models)
- APN: Access Point Name
- username: username for cellular data access. If no username is needed, can omit the argument and mPACK software will use a non-null but meaningless value when state is read
- password: password for cellular data access. If no password is needed, can omit the argument and mPACK software will use a non-null but meaningless value when state is read
- CID: context ID. Please consult Lantronix team on when to use this parameter and what value to use
- Auth: Configure the authentication - the allowed values of parameter are
 - 0: no authentication
 - 1: PAP
 - 2: CHAP
 - 3: automatic selection of authentication type (none/CHAP/PAP)
- IPType: : IP protocol type - the allowed values of parameter are:
 - 0 (default value): IPv4
 - 1: IPv6
 - 2: IPv4v6 with IPv4 preferred for internal sockets
 - 3: IPv4v6 with IPv6 preferred for internal sockets

exec:

```
AT#IPCELLULAR=1,"CMHK"
OK
```

state:

```
AT#IPCELLULAR?
#IPCELLULAR: 1,"internet","*","*",8,3,0
OK
```

info:

```
AT#IPCELLULAR=?
#IPCELLULAR: (1),(64),(64),(64),[(1-11)],[(0-3)],[(0-3)]
OK
```

6.2 AT#IPCONNECT

Activate or deactivate cellular data or internet connection

ALLOWED: exec-state-info

Note: The 1st parameter in this command is only for format correspondence with the older Smart pack version.

AT#IPCONNECT= (CID), (mode)

- CID: Context ID (Please contact Lantronix regarding the use of CID, default value is 1)
- mode:
 - 0: disconnect cellular data
 - 1: connect cellular data

exec:

```
AT#IPCONNECT=1,1
#IPCONNECT: 1,1

OK
```

state:

```
AT#IPCONNECT?
#IPCONNECT: 1,1

OK
```

info:

```
AT#IPCONNECT=?
#IPCONNECT: (1), (0-1)

OK
```

6.3 AT#GETBRIP

Get the IP address (when data activated)

ALLOWED: state-info

Note: The command returns only IPv4 address for now.

AT#GETBRIP

state:

```
AT#GETBRIP?
#GETBRIP: 1,1,"182.153.105.197"

OK
```

info:

```
AT#GETBRIP=?
#GETBRIP: (1), (0-1), (IPV4 or IPV6)

OK
```

6.4 AT#IPPING

IP PING configuration

ALLOWED: exec-state-info

AT#IPPING=(option), (address), (num), (interval), (timeout)

- Option
 - 0, 1: reserved
 - 2: configure ping address and parameters
- address: IP address of the target to be pinged
- interval: time in second between each ping trial. Default value is 3. Valid range is 1 to 10.
- timeout: time in ms before ping is timed out. Default value is 10. Valid range is 5000 to 60000.

Note:

- **Enable cellular data using `at#ipconnect=1,1` before ping execution**
- **The `IPPING` command is just used for setting the `PING` address and parameters (interval, timeout) for use by other functions. This command cannot be used to directly `PING` a given address in the current implementation.**

exec:

```
AT#IPPING=2,"8.8.8.8",4,10,5000
OK
```

state:

```
AT#IPPING?
#IPPING: "8.8.8.8",4,10,5000
OK
```

info:

```
AT#IPPING=?
#IPPING: (0-2),(120),(1-10),(1-10),(5000-60000)
OK
```

6.5 AT#PSDURC

To Enable/Disable +UUPSDA URC on serial.

ALLOWED: exec-state-info

AT#PSDURC=(option)

exec:

```
AT#PSDURC=1
OK
```

state:

```
AT#PSDURC?
#PSDURC: 0
OK
```

info:

```
AT#PSDURC=?  
#PSDMURC: (0-1)  
  
OK
```

7 System

7.1 AT#IPTCP

Command to set TCP socket parameters

ALLOWED: exec-state-info

Note:

- *Mode & IP address should be entered in quotes*
- *The "delay" parameter is deprecated and has no effect (suggested not to use)*
- *For IPV6 connection, option to be set using AT#IPCELLULAR command*
- *IPV6 connection available in select modules only*

AT#IPTCP=(idx), (port), (mode), (ip), [(delay)]

- idx
 - 1: set primary IP of remote TCP server (client mode only)
 - 2: set backup IP of remote TCP server (client mode only)
- port: number from 0 to 65535
- mode
 - "C": Modem as client to remote server
 - "S": Modem as server for remote client to connect
- ip: IP address of remote partner (IPv4 dotted notation)
- delay: (deprecated, no need to enter)

exec:

```
AT#IPTCP=1,50002,"C","162.242.170.48"
OK
```

state:

```
AT#IPTCP?
#IPTCP: 1,50002,"C","162.242.170.48",1
#IPTCP: 2,0,"C","",1
OK
```

info:

```
AT#IPTCP=?
#IPTCP: (1-2),(0-65535),("C","S"),(120),(0,1)
OK
```

7.2 AT#IPUDP

Command to set UDP socket parameters

ALLOWED: exec-state-info

Note:

- *Mode & IP address should be entered in quotes*
- *The "delay" parameter is deprecated and has no effect (suggested not to use)*

AT#IPUDP=(idx), (port), (mode), (ip), [(delay)]

- idx: 1 or 2, just mirror of AT#IPTCP command, not applicable to UDP
- port: number from 0 to 65535
- mode:
 - "C": Modem to connect to remote UDP server
 - "S": Modem waiting for remote UDP client to connect
- ip: IP address of remote partner (IPv4 dotted notation)
- delay: delay: (deprecated, no need to enter)

exec:

```
AT#IPUDP=1,50003,"C","162.242.170.47"
OK
```

exec:

```
AT#IPUDP?
#IPUDP: 1,50003,"C","162.242.170.47",1
#IPUDP: 2,0,"C","",1
OK
```

exec:

```
AT#IPUDP=?
#IPUDP: (1-2),(0-65535),("C","S"),(120),(0,1)
OK
```

7.3 AT#AUTOTCP

Command to Start Auto TCP functionality

ALLOWED: exec-state-info

AT#AUTOTCP=(mode)

- mode
 - 0: AUTOTCP connection OFF
 - 1: AUTOTCP connection ON

exec:

```
AT#AUTOTCP=0
OK
```

state:

```
AT#AUTOTCP?
#AUTOTCP: 0
OK
```

info:

```
AT#AUTOTCP=?  
#AUTOTCP: (0,1)  
  
OK
```

7.4 AT#AUTOUDP

Command to Start Auto UDP functionality

ALLOWED: exec-state-info

AT#AUTOUDP=(mode)

- mode
 - 0: AUTOUDP connection OFF
 - 1: AUTOUDP connection ON

exec:

```
AT#AUTOUDP=0  
OK
```

state:

```
AT#AUTOUDP?  
#AUTOUDP: 0  
  
OK
```

info:

```
AT#AUTOUDP=?  
#AUTOUDP: (0,1)  
  
OK
```

7.5 AT#OTCP

On-demand TCP socket connection.

ALLOWED: exec-state-info

AT#OTCP=(mode)

- mode
 - 0: TCP connection OFF
 - 1: TCP connection ON

exec:

```
AT#OTCP=0  
OK
```


Note:

- In the current implementation, “OK” means command is accepted. It does not mean that the device is connected to the server. “CONNECT” should appear on the appropriate terminal (UART or USB) if connection is successful.
- To get URC response for CONNECT and DISCONNECT user should enable AT#MURC=1

state:

```
AT#OTCP?
#OTCP: 0

OK
```

info:

```
AT#OTCP=?
#OTCP: (0,1)

OK
```

7.6 AT#OUDP

On-demand UDP socket connection.

ALLOWED: exec-state-info

AT#OUDP=(mode)

- mode
 - 0: UDP connection OFF
 - 1: UDP connection ON

exec:

```
AT#OUDP=0

OK
```

state:

```
AT#OUDP=?
#OUDP: 0

OK
```

info:

```
AT#OUDP=?
#OUDP: (0, 1)

OK
```

7.7 AT#SCHOST

Configure, erase & read remote TCP server parameter

ALLOWED: exec-state-info

AT#SCHOST=(oper), (id), [(server), (port), [(retry), (delay)]]

- oper:
 - 0 = enter host setting
 - 1 = read host setting
 - 2 = erase host setting
- id: only 1 for now
- server: IP address of host (IPv4 or text notation)
- port: port number on host
- retry, delay: Deprecated, unable to set

exec:

```
AT#SCHOST=0,1,"162.242.170.59",8888
OK
```

state:

```
AT#SCHOST?
#SCHOST: 1,"162.242.170.59",8888,1,1,0

OK
```

info:

```
AT#SCHOST=?
#SCHOST: (0-2), (1), (120), (0-65535), (0-10), (1-60)

OK
```

7.8 AT#IPOPT

Optional IP socket parameters

ALLOWED: exec-state-info

Note: Some options are not yet implemented and will be implemented stage by stage. Therefore, ERROR may be returned for some of the options

AT#IPOPT=(option), (value), [(action)/(string)]

- option:
 - 1: Keep alive packet
 - 2: Packet size
 - 3: (deprecated)
 - 4: Enable ping & configure ping period. When enabled, the modem will PING the address set by the AT#IPPING command and will perform the specified action upon PING failure.
 - 5: Data on first connection
- Value:
 - for option 1: 0-43200. Duration to send keep alive packet, in seconds; 0 disables the feature
 - for option 2: 0-1472. TCP Packet size: if 0, default size is used
 - for option 4: 1 - 65535. Time period of PING. If 0, then PING is disabled
 - for option 5: 0 to disable; 1 to enable data on first connection; 2 to edit the string to be sent

- action: To specify the action will be taken if a set of ping action fail:
 - 0: do nothing (default). If ping fails, the timer will reload & no action will be taken.
 - 1: reactivate data connection.
 - 2: reset modem.
- string: For option 5, maximum 120 hex characters and only even length

exec:

```
AT#ILOPT=1,30
OK
AT#ILOPT=5,2,"414243444546474849"
OK
```

state:

```
AT#ILOPT?
#ILOPT: 1,30
#ILOPT: 2,0
#ILOPT: 3,
#ILOPT: 4,0,0
#ILOPT: 5,0,"",1
OK
```

info:

```
AT#ILOPT=?
#ILOPT: 1,(0-43200)
#ILOPT: 2,(0-1472)
#ILOPT: 3,
#ILOPT: 4,(1-65535),(0-2)
#ILOPT: 5,(0-2)[,(0-120)]
OK
```

7.9 AT#AUOPT

Optional parameters for AUTOTCP/AUTOUDP connection

ALLOWED: exec-state-info

Note: Option 2 depends upon the availability of the server mode
Some options are not yet implemented and will be implemented stage by stage. Therefore, ERROR may be returned for some of the options

AT#AUOPT=(option), (value), (string)

- option:
 - 1: Connection idle period
 - 2: Server idle
 - 3: Connection period
 - 4: Connection prefix (only sent upon first connection)
 - 5: Heartbeat packet
 - 6: Serial prefix
- Value:
 - For option 1: 0-43200. Duration of connection without data transfer, in seconds; 0 disables the feature

- For option 2: 0-43200. Duration of SERVER without a connected remote client, in seconds; 0 disables the feature
 - For option 3: 0-43200. Duration of connection, in seconds; 0 disables the feature
 - For option 4: 0 to disable, 1 to enable connection prefix; 2 to edit the string to be sent
 - For option 5: 0-180. Period of inactivity after which the heartbeat packet is sent, in seconds
 - For option 6: 0 to disable, 1 to enable serial prefix; 2 to edit the string to be sent (and hex byte follows as the next parameter)
- string: hexadecimal string (e.g., 0AFF) required. One byte for option 6; and up to 16 bytes for option 4

exec:

```
AT#AUOPT=1,3600
OK
AT#AUOPT=4,2,"4149"
OK
```

state:

```
AT#AUOPT?
#AUOPT: 1,3600
#AUOPT: 2,0
#AUOPT: 3,0
#AUOPT: 4,0,"4149"
#AUOPT: 5,0
#AUOPT: 6,0,"01"

OK
```

info:

```
AT#AUOPT=?
#AUOPT: (1-6),(0-43200)[,(0-1)]

OK
```

7.10 AT#SERVAUTH

Parameter configuration for enabling password protected access for remote TCP client (when M11x modem is in TCP-server mode).

ALLOWED: exec-info

Note: Refer to AT#TCPTERM on the sequence for AT#SERVAUTH

AT#SERVAUTH=(mode), [(password)]

- mode:
 - 0: Disable server authentication
 - 1: Enable server authentication
 - 2: Configure password
- password: 6 characters enclosed in double quotes. Default "000000"

exec:

```
AT#SERVAUTH=2,"123456"
OK
```

state:

```
AT#SERVAUTH?
ERROR
```

info:

```
AT#SERVAUTH=?
#SERVAUTH: (0-2), (6)

OK
```

7.11 AT#MURC

Enables/Disables “CONNECT” message upon Socket connection and “DISCONNECT” message upon socket disconnections

ALLOWED: exec-state-info

AT#MURC=(flag)

flag: 0 to disable cellular AT commands on the USB port (and allow cellular AT commands on the serial port); 1 to reverse the ports

exec:

```
AT#MURC=1
OK
```

state:

```
AT#MURC?
#MURC: 1

OK
```

info:

```
AT#MURC=?
#MURC: (0-1)

OK
```

7.12 AT#IOFTPPARA

Configures the FTP parameters for FTP services.

ALLOWED: exec-state-info

Note: Server IP, Username, password should be entered in quotes.

AT#IOFTPPARA=(mode),(server_no),(server_IP),(port),(FTP_mode),(user_name),(password)

Mode:

- 0: To disable FTP servers
 - 0,1: To disable FTP server 1

- 0,2 - To disable FTP server 2
 - 0,3 - To disable FTP server 3
- 1: To Enable FTP server.
 - 1,1 – To enable FTP server 1
 - 0,2 - To disable FTP server 2
 - 0,3 - To disable FTP server 3
- 2: To configure the FTP server parameters

server_no: FTP server number

server_IP: FTP Server IP address

port: Remote FTP server listening port.(1-65535)

FTP mode:

- 0 – Active mode
- 1- Passive mode

user_name: User name for FTP login procedure

password: Password for FTP login procedure

exec:

```
AT#IOFTPPARA=2,2,"52.172.43.161",21,0,"analog","AN11**ogAZ99"
OK
```

state:

```
AT#IOFTPPARA?
#IOFTPPARA: 1,0,"59.181.166.3",21,0,"maestro","HeritageW1rele$$"
#IOFTPPARA: 2,0,"52.172.43.161",21,0,"analog","AN11**ogAZ99"
#IOFTPPARA: 3,0,"",21,0,"",""
OK
```

info:

```
#IOFTPPARA: (0-2),(1-3),(1-120),(0-65535),(0-1),(1-24),(1-24)
OK
```

8 Remote Control Commands

8.1 AT#SMSAT

This feature is to control the modem to interpret AT command from incoming SMS, executing it, and return the result to sender by SMS. The user can enable the modem to receive AT command by incoming SMS.

Description of the operation:

Step 1: Send AT command to
modem by SMS
000000AT+CSQ

Step 2: Modem execute and return
response by SMS
+CSQ: 17,0
OK



Fig 8.1.1: Example of remote AT command by SMS

1. When enabled, the modem will treat the incoming SMS as a source of AT command only if all the following conditions (a, b, and c) are fulfilled:
 - a. The content of SMS sent to the modem is using standard 7-bit GSM data decoding scheme
 - b. The first 6 characters of the SMS content matches the <key> parameter set by AT+SMSAT command (default key is "000000")
 - c. The 7th and 8th characters of the SMS content is "AT" (in capital letters).
2. If SMSAT is enabled, the modem reads each incoming SMS, if the conditions mentioned in 1 are matched the message will be executed, even it is an invalid AT command.
3. When using SMSAT feature, only +CNMI: x, 1, x, x, x setting could be used (i.e., incoming message will be stored in SIM card).
4. The maximum length of the AT command is limited by length of SMS, i.e., 160-6 = 154 characters.
5. When the SMS AT command is executed, all intermediate and final Read Responses will be buffered recorded, then return to the sender's phone number in one single SMS.
6. If Read Response(s) of the AT command is (are) more than 160 characters, only the first 160 characters will be returned.
7. In case the modem cannot get terminal Read Response within 26 seconds, the modem will then abort the command, and return intermediate Read Responses (if present).
 8. If the SMSAT feature is enabled, all incoming SMS, either with valid AT command or not, will be erased. This is to prevent SIM card memory from fully filled; such the modem will not receive new SMS.

Configure, enable, and disable remote AT command by SMS; ALLOWED: exec-state-info

AT#SMSAT=(mode), [(param)]

- mode:

- 0: Disable SMSAT
- 1: Enable SMSAT
- 2: Change the password for SMSAT
- 3: Change the SMS response trigger
- param:
 - for mode=2: password, 6 alphanumeric characters in quotes
 - for mode=3: 0 to disable SMS response; 1 to enable SMS response
 - (Not needed for modes = 0 or 1)

exec:

```
AT#SMSAT=2, "123456"
OK
```

state:

```
AT#SMSAT?
#SMSAT: 0, "123456", 0
OK
```

info:

```
AT#SMSAT=?
#SMSAT: (0-3), ((6) / (0-1))
OK
```

8.2 AT#EVENTSMS

Command to set the number for Event SMS reception

AT#EVENTSMS=(mobile number)

ALLOWED: exec-state-info

exec:

```
AT#EVENTSMS="7972406771"
OK
```

state:

```
AT#EVENTSMS?
#EVENTSMS: "7972406771"
OK
```

info:

```
AT#EVENTSMS=?
#EVENTSMS: (10-30)
OK
```


8.3 AT#TCPTERM

Parameter configuration for enabling configuration over cellular data network; and start/stop TCP Terminal for remote commands over TCP.

ALLOWED: exec-state-info

Note: Network watchdog ping is used by application when the device enters data mode.

AT#TCPTERM=(mode), [(password), (port), (timeout)]

- mode:
 - 0: Disable TCP Terminal
 - 1: Enable TCP Terminal
 - 2: Configure password, port, timeout
- password: max 16 characters. Default "000000"
- port: port used on the modem for incoming TCP connection. Default 23
- timeout: specified in seconds. Default 30

exec:

```
AT#TCPTERM=2,"000000",23,30
OK
```

state:

```
AT#TCPTERM?
#TCPTERM: 0,"000000",23,30
OK
```

info:

```
AT#TCPTERM=?
#TCPTERM: (0-2),(16),(1-65535),(1-43200)
OK
```

9 Firmware Update Commands

9.1 AT#WEBUPDATE

Command to configure DOTA parameter & initiate HTTP DOTA for firmware update

ALLOWED: exec-state-info

AT#WEBUPDATE=(filename), [(port), (ip)]

- filename: up to 120 characters, in quotes
- port: port of the server on which the update file is stored
- ip: IP address of the server on which the update file is stored

Note: For M114 CAT-1 BIS only AT#WEBUPDATE is required for DOTA. It will directly write into flash.

exec:

```
AT#WEBUPDATE="/mpack/mpack_R0100.bin",80,"3.252.19.23"
OK
```

state:

```
AT#WEBUPDATE?
#WEBUPDATE: "/mpack/mpack_R0100.bin",80,"3.252.19.23"
OK
```

info:

```
AT#WEBUPDATE=?
#WEBUPDATE: (120), (0-65535), (120)
OK
```

9.2 AT#UPDATE

Controls the update process

ALLOWED: exec-state

Note: This command is not supported by M114 CAT-1 BIS.

AT#UPDATE=(value)

- option
 - 0: stop the update process
 - 1: stop the update process

exec:

```
AT#UPDATE=0
OK
```

state:

```
AT#UPDATE?  
#UPDATE: 0  
  
OK
```

info:

```
AT#UPDATE=?  
ERROR  
  
OK
```

10 I/O Triggering Commands

10.1 AT#DITRIG

Configure DI high low threshold parameter ALLOWED: exec-state-info

AT#DITRIG=(pin_number), (min_val), (max_val), (debounce)

- pin_number: 1-2
- min_val: 0-32, in V
- max_val: 0-32, in V (must be >= min_val)
- debounce: 0-500 (in seconds)

exec:

```
AT#DITRIG=1,30,30,10
OK
```

state:

```
AT#DITRIG?
#DITRIG: 1,30,30,10
#DITRIG: 2,0,32,0
OK
```

info:

```
AT#DITRIG=?
#DITRIG: (1, 2), (0-32), (0-32), (0-500)
OK
```

10.2 AT#DITRIGENB

Enable DI trigger parameters

ALLOWED: exec-state-info

AT#DITRIGENB=(pin_number), (enb), (trigger_type)

- pin_number: 1-2
- enb:
 - 0: disable trigger
 - 1: specify timeout
- trigger_type:
 - 0: unused
 - 1: high-to-low transition trigger
 - 2: low-to-high transition trigger
 - 3: unused

exec:

```
AT#DITRIGENB=1,0,1
OK
```

state:

```
AT#DITRIGENB?
#DITRIGENB: 1,0,1
#DITRIGENB: 2,1,3
OK
```

info:

```
AT#DITRIGENB=?
#DITRIGENB: (1-2), (0-1), (0-3)
OK
```

10.3 AT#MSGPER

ALLOWED: exec-state-info

AT#MSGPER=(pin_number), (interval), (count)

- pin_number: 1-2
- interval: how often messages are generated, in sec. Value 0-60000
- count: number of messages generated. Value 0-100

exec:

```
AT#MSGPER=2,10,3
OK
```

state:

```
AT#MSGPER?
#MSGPER: 1,0,0
#MSGPER: 2,10,3
OK
```

info:

```
AT#MSGPER=?
#MSGPER: (1-2), (0-60000), (0-100)
OK
```

10.4 AT#MSGSTR

Configure Message/Device ID and message strings associated with the 2 pins.

ALLOWED: exec-state-info

AT#MSGSTR=(op), (device_id), (msg1), (msg2)

- op
 - 0: disable message string (not yet implemented)
 - 1: enable message string (not yet implemented)

- 2: configure message string
- device_id: message or device ID
- msg1: concatenated with Device ID for DI1
- msg2: concatenated with Device ID for DI2

exec:

```
AT#MSGSTR=2,"Lantronix","001","234"
OK
```

state:

```
AT#MSGSTR?
#MSGSTR: 2,"Lantronix","001","234"

OK
```

info:

```
AT#MSGSTR=?
#MSGSTR: (0-2),(120),(5),(5)

OK
```

10.5 AT#TRANSMODE

Configure I/O event reporting mode

ALLOWED: exec-state-info

Note: To configure the remote IO event recipient use the following commands:

SMS:

AT#LGPARA= 2, <phone number>

AT#EVENTSMS=<phone number> (For M114 CAT-1 BIS)

TCP: AT#SCHOST

UDP: AT#SCHOST

FTP: AT#IOFTPARA

HTTP: NA

AT#TRANSMODE=(mode)

mode:

- 0: Disable reporting. Default
- 1: SMS reporting mode
- 2: TCP reporting mode
- 3: UDP reporting mode
- 4: FTP reporting mode
- 5: (customer specific mode, not available to general customer)

exec:

```
AT#TRANSMODE=1
OK
```

state:

```
AT#TRANSMODE?  
#TRANSMODE: 1  
  
OK
```

info:

```
AT#TRANSMODE=?  
#TRANSMODE: (0-7)  
  
OK
```

11 Location Commands

11.1 AT#MLOC

Get the location of the device. The following information is returned by command:

date, time, latitude, longitude, altitude, uncertainty, speed, direction, vertical_acceleration, sensor_used, SV_used, antenna_status, and jamming_status.

Note: This command is not supported by M11 CAT-1 BIS.

ALLOWED: state-info

AT#MLOC

state:

```
AT#MLOC?  
#MLOC: 31/07/2019,10:21:16.000,0.0000000,0.0000000,0,20000000,0,0,0,0,0,0,0  
OK
```

info:

```
AT#MLOC=?  
ERROR
```


12 PercepXion User Commands

12.1 AT#PXNENB

Enable, disable percepXion client

ALLOWED: exec-state-info

AT#PXNENB=(flag)

flag:

- 0: Disable
- 1: Enable

PercepXion client is disabled by default

exec:

```
AT#PXNENB=1
OK
```

state:

```
AT#PXNENB?
#PXNENB: 1
OK
```

info:

```
AT#PXNENB=?
#PXNENB: (0-1)
OK
```

12.2 AT#PXNURL

Set and get percepXion server URL

ALLOWED: exec-state-info

AT#PXNURL=(url)

url: String (up to 64 printable ASCII characters)

PercepXion URL is set to api.percepXion.ai

exec:

```
AT#PXNURL="api.percepXion.ai"
OK
```

state:

```
AT#PXNURL?  
#PXNURL: api.percepXion.ai  
  
OK
```

info:

```
AT#PXNURL=?  
#PXNURL: (64)  
  
OK
```

12.3 AT#PXNDVNAME

Set and get device name

ALLOWED: exec-state-info

AT#PXNDVNAME=(name)

name: String (up to 32 printable ASCII characters)

Default device name is M114_Cat1Bis

exec:

```
AT#PXNDVNAME="M114_Cat1Bis"  
OK
```

state:

```
AT#PXNDVNAME?  
#PXNDVNAME: M114_Cat1Bis  
  
OK
```

info:

```
AT#PXNDVNAME=?  
#PXNDVNAME: (32)  
  
OK
```

12.4 AT#PXNDVDESC

Set and get the device description

ALLOWED: exec-state-info

AT#PXNDVDESC=(desc)

desc: String (up to 32 printable ASCII charatcers)

Default device description is M114_Cat1Bis_description

exec:

```
AT#PXNDVDESC="M114_Cat1Bis_description"
OK
```

state:

```
AT#PXNDVDESC?
#PXNDVDESC: M114_Cat1Bis_description
OK
```

info:

```
AT#PXNDVDESC=?
#PXNDVDESC: (32)
OK
```

12.5 AT#PXNSTATEUPDATEINT

Set and get the frequency at which the module updates the device status to perception

ALLOWED: exec-state-info

AT#PXNSTATEUPDATEINT=(interval)

interval: 1-1440 minutes

Default interval is 1 minute

exec:

```
AT#PXNSTATEUPDATEINT=20
OK
```

state:

```
AT#PXNSTATEUPDATEINT?
#PXNSTATEUPDATEINT: 20
OK
```

info:

```
AT#PXNSTATEUPDATEINT=?
#PXNSTATEUPDATEINT: (1-1440)
OK
```

12.6 AT#PXNCONTCHECKINT

Set and get the frequency at which gateway checks perception for updates to configuration or firmware

ALLOWED: exec-state-info

AT#PXNCONTCHECKINT=(interval)

interval: 1-2160 hours (90 days)

Default interval is 1 hour

exec:

```
AT#PXNCONTCHECKINT=200
OK
```

state:

```
AT#PXNCONTCHECKINT?
#PXNCONTCHECKINT: 200

OK
```

info:

```
AT#PXNCONTCHECKINT=?
#PXNCONTCHECKINT: (1-2160 (90days))

OK
```

13 Application Notes

13.1 Cellular Setup Example

The AT#IPCELLULAR command is used to setup cellular network parameters. The configuration of the cellular network is done by setting the following parameters:

```
AT#IPCELLULAR=(slot), (APN) [(username), (password) [(cid), (Auth), (IPTYPE) ]]
```

where:

- slot: Use 1 for mono-SIM models
- APN: Access Point Name
- Username: If omitted, the modem will supply a non-blank value when it is read
- Password: If omitted, the modem will supply a non-blank value when it is read
- cid: Cellular profile id
- Auth: Authentication
- IPTYPE: Protocol type

Examples:

Command	Response	Description
AT#IPCELLULAR=1, <APN>, "a", "a", 1, 0, 0	OK	This command is used to set the cellular/data network by configuring the sim slot, APN, Username and Password
AT#IPCELLULAR?	#IPCELLULAR: 1, "internet", "a", "a", 1, 0, 1 OK	This command reads what is the current setting
AT#IPCELLULAR=?	#IPCELLULAR: (1), (64), (64), (64), [(1-11)], [(0-3)], [(0-3)] OK	The command is used to give the valid range of all parameters

13.2 AutoTCP Client Setup Example

Note: AutoTCP should be disabled before changing any AT#IPCELLULAR and AT#IPTCP parameters.

AT#IPCELLULAR parameters must be set up correctly before AutoTCP can be used.

The AT#IPTCP command is used to setup TCP Client socket parameters:

```
AT#IPTCP=<idx>, "<IP-port>", "<Client/Socket>", "<IP-address>"
```

where:

- idx: Set primary/secondary remote server
- IP-port: port of the TCP Socket Server
- Client/Socket: Use "C" for modem as TCP client
- IP-address: IP address of TCP Socket server

Command	Response	Description
AT#IPTCP=1,50000,"C", "162.242.170.48"	OK	This command is used to set the IP address and port of the TCP Client Socket for UART.
AT#IPTCP?	#IPTCP: 1,50000,"C", "162.242.170.48",1 #IPTCP: 2,0,"C","",1 OK	This command reads what is the current setting. Note an extra 5th parameter appears in the read response. This parameter is deprecated and can be ignored.
AT#IPTCP=?	#IPTCP: (1-2),(0-65535), ("C","S"),"(120)" OK	This command is used to give the valid range of all parameters.

The AT#AUTOTCP command is used to enable or disable AutoTCP by:

```
AT#AUTOTCP=<enable/disable>
```

where:

- enable/disable: 1 to enable; 0 to disable

Command	Response	Description
AT#AUTOTCP=0	OK	This command turns on AutoTCP.
AT#AUTOTCP?	#AUTOTCP: 0 OK	This command checks the current status of AutoTCP.
AT#AUTOTCP=?	#AUTOTCP: (0,1) OK	This command is used to give the valid range of the parameter.

Note: After enabling for client mode:

- **"CONNECT" should appear on the UART/USB port of the modem approximately 20 seconds afterwards.**
- **Thereafter, the port is turned into data mode, where no AT commands are accepted.**
- **Every byte sent in data mode goes to the remote peer.**
- **If +++ is sent in data mode, preceded and followed by 1-second of no activity on the data channel, connection to the remote peer will be broken. "DISCONNECT" will be seen and the port will go back to AT command (where AT commands are expected).**

13.3 AutoTCP Server Setup Example

Note: AutoTCP should be disabled before changing any AT#IPCELLULAR and AT#IPTCP parameters

AT#IPCELLULAR parameters must be set up correctly before AutoTCP can be used.

The AT#IPTCP command is used to setup TCP Client socket parameters:

```
AT#IPTCP=<UART/USB>,"<IP-port>","<Client/Socket>","<IP-address>"
```

where:

- UART/USB: 1 for UART; 2 for USB
- IP-port: port on the modem for TCP Socket Server
- Client/Socket: Use "S" for modem as TCP server
- IP-address: IP address of TCP Socket client that is accepted for connection.

Note: "255.255.255.255" means all client connections are accepted.

Command	Response	Description
AT#IPTCP=1,6000,"S", "255.255.255.255"	OK	This command is used to set the port on the local modem and the client address of the TCP Server Socket for UART
AT#IPTCP?	#IPTCP: 1,6000,"S","255.255.255.255",1 #IPTCP: 2,0,"C","",1 OK	This command reads what is the current setting. Note an extra 5th parameter appears in the read response. This parameter is deprecated and can be ignored.

The AT#AUTOTCP command is used to enable or disable AutoTCP by:

```
AT#AUTOTCP=<enable/disable>
```

where:

enable/disable: 1 to enable; 0 to disable

Note: After enabling for server mode

- After at most 30 seconds, the modem is ready as server.
- When external client connects to the modem, the serial/ USB port is turned into data mode.
- Every byte sent in data mode goes to the remote socket peer.
- If +++ is sent in data mode, preceded and followed by 1-second of no activity on the data channel, connection to the remote peer will be broken. "DISCONNECT" will be seen and the port will go back to AT command (where AT commands are expected)

Command	Response	Description
(See table above)		

13.4 Flow diagram of Auto TCP/UDP Connection

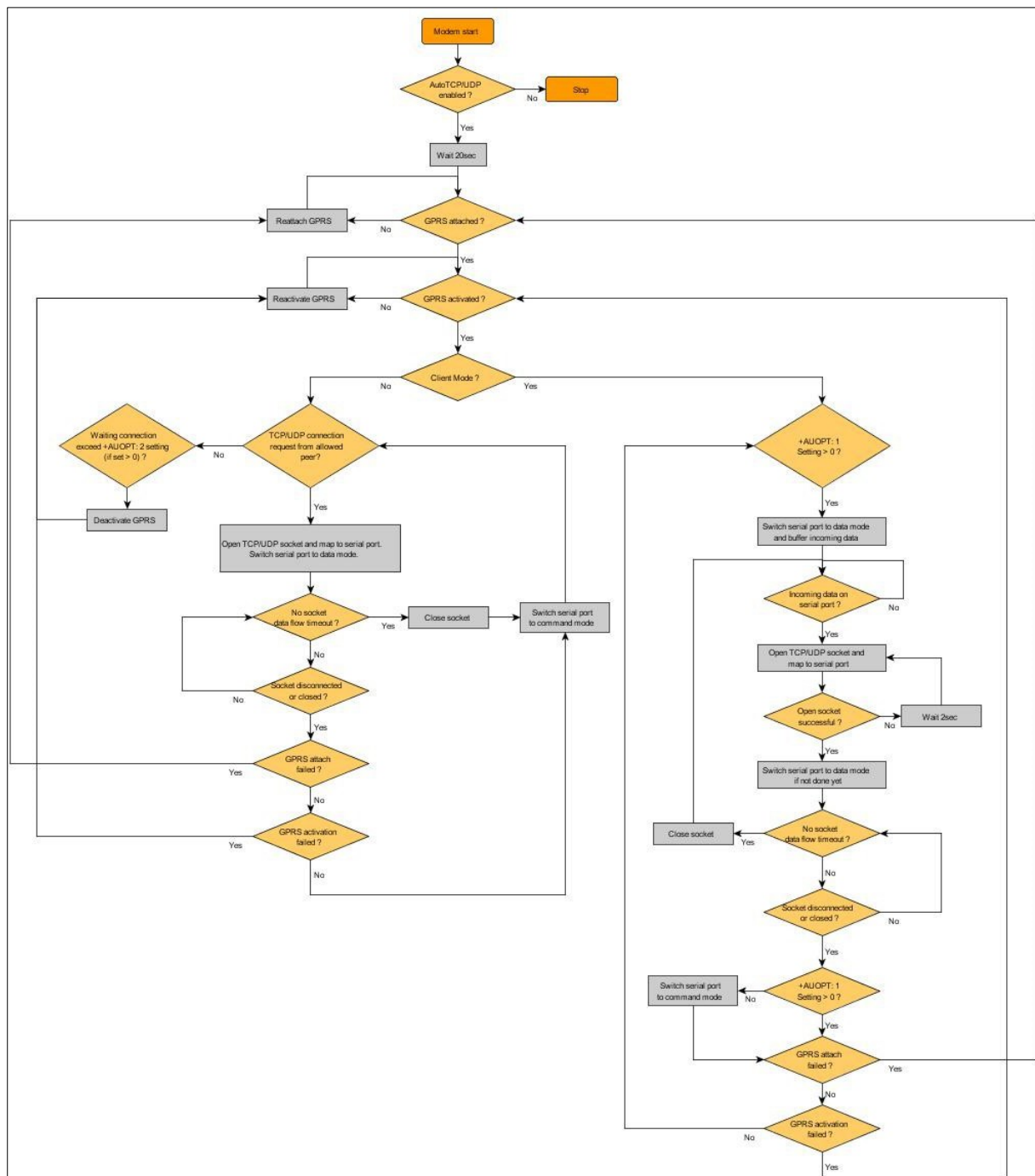


Fig13.4.1: Auto TCP / UDP Flow Diagram

14 Troubleshooting

14.1 The modem's LED does not light

- Check if the modem has been properly connected to a 5-32 V power supply
- Check if the power connector is properly inserted
- Check the fuse in the power cord

14.2 The modem's GREEN LED continues blinking after power up

Issue: The modem's Green LED blinks but does not become stable for a long time after power up.

- Check if a valid SIM card has been properly inserted
- Check if the SIM card has been locked (refer to AT+CPIN command in AT command guide)
- Check if the external power has been properly connected to the modem
- Check if the network coverage is available

14.3 The modem does not respond to the terminal program

- Check if the RS-232 cable has been properly connected
- Check if your program has proper settings. Factory setting of the UART port of the modem is:
 - 115200 bps
 - 8 data bits
 - 1 stop bit
 - no parity bit