

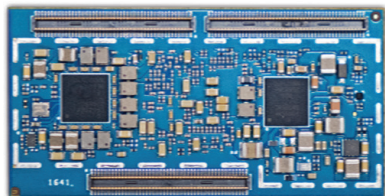
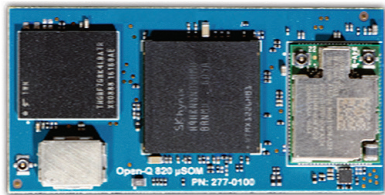
Lantronix Open-Q™ 820Pro μSOM

Hardware Specifications:

Open-Q™ 820Pro μSOM	
• Processors	Qualcomm® APQ8096SG built on 14nm technology Qualcomm® Kryo™ Quad-Core 64-bit CPU: 2X Gold cores @ 2.342 GHz, 2X Silver cores @ 1.593 GHz Qualcomm® Adreno™ 530 GPU @ 652.8 MHz with OpenGL ES 3.1, OpenCL 2.0 Full, DirectX 11, Path Rendering Qualcomm® Hexagon™ 680 DSP @ 825 MHz
• Memory/Storage	4GB LPDDR4 SDRAM dual-channel PoP @ 1866MHz 32GB UFS 2.0 Flash 1-lane, gear 3
• Wireless	Pre-certified Wi-Fi 802.11a/b/g/n/ac 2.4/5Ghz 2x2 MU-MIMO (QCA6174A) with U.FL antenna connector Bluetooth 4.2 + BLE
• Location Services	Qualcomm® IZat™ Gen 8C– GPS, GLONASS, Compass (WGR7640) with U.FL antenna connector
• Display Interfaces	2x MIPI-DSI 4-lane, up to 3840x2400 @60fps, 1x HDMI 2.0 up to 4K @ 60fps Up to 3 concurrent displays – 2 panels + external
• Camera Interface	3x 4-lane MIPI CSI supporting up to 28MP with dual ISP Qualcomm® Spectra™ Dual 14-bit ISP
• Video	H.264 (AVC): Video Playback and Capture at 4K60 H.265 (HEVC): Video Playback at 4K60 and video capture at 4K30
• Audio	1x SLIMbus supporting WCD9335 audio codec (external), and 2x I2S, or 3x I2S for other external audio devices
• Power/Battery Management	Power management and battery charging (PMI8996)
• I/O	1x USB 3.0 client or host, 1x USB 2.0 client or host, 2x PCIe v2.1, 8x BLSP configurable ports (I2C, SPI, UART or GPIO), 1x SDIO, LED driver outputs
• Operating Environment	Input 3.6V to 4.2V Operating Temperature -10°C to +70°C
• Form Factor	3x 100 pin board to board connectors 50mm x 25mm

Software:

• OS Support	Android™ 9, Debian Linux® *Note that all hardware features may not be supported by all SW – see latest SW release notes for details
---------------------	--



Purchasing Information:

• Open-Q™ 820Pro μSOM	PN: QC-DB-I20004
------------------------------	------------------

Alternate SOM configurations available by special order (minimum order quantities apply) - e.g. different memory size, etc. Contact sales to discuss your specific needs today.

Contact Information:

Americas

800.422.7055
americas_sales@lantronix.com
www.lantronix.com
NASDAQ: LTRX

Asia/Pacific/Japan

+852 3428.2338
asiapacific_sales@lantronix.com

China: +86.21.6237.8868

India: +91 994-551-2488

Indonesia: +91 994-551-2488

Japan: +81.8.50.1354.6201

Europe

+31 (0) 76.52.3.6.74 4
eu_sales@lantronix.com

Certifications



© 2020 Lantronix, Inc. All rights reserved. Lantronix is a registered trademark of Lantronix, Inc. in the U.S. and other countries. Open-Q is a trademark of Lantronix, Inc. Qualcomm APQ8096SG, Qualcomm Adreno, Qualcomm Hexagon, Qualcomm IZat, Qualcomm Kryo, and Qualcomm Spectra are products of Qualcomm Technologies, Inc. and/or its subsidiaries. Qualcomm, Adreno, Hexagon, IZat, Kryo, and Spectra are trademarks of Qualcomm Incorporated, registered in the United States and other countries. All other trademarks are the property of their respective owners. Specifications subject to change without notice. Not all features listed may be supported in software. Open-Q 820Pro μSOM v2.0