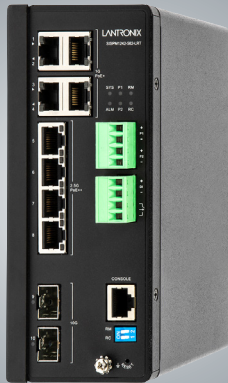




# SISPM1242-582-LRT

Hardened Switch



## MANAGED HARDENED MULTI-GIGABIT ETHERNET POE++ SWITCH, 10G UPLINK

(4) 10/100/1000Base-T PoE+ and (4) 100M/1G/2.5G PoE++ Ports, (2) 1G/10G SFP+ Slots

The SISPM1242-582-LRT is a managed PoE++ switch suitable for connecting and powering devices in hardened environments. It has (4) 10/100/1000 and (4) 100M/1G/2.5G PoE++ ports with (2) 1G/10G dual speed SFP+ slots. The switch can support PoE++ on (4) ports and PoE+ on all (8) ports.

The switch includes Lantronix unique device management software (DMS). DMS offers many time-saving and cost saving features that simplify monitoring and management. It is accessible by local web manager, providing advanced configuration and management of all IP addressable devices in the network, including a graphical network topology, floor map creator, device map view, traffic monitoring, network diagnostics for troubleshooting and more.

Lantronix's hardened switches are certified to operate reliably in harsh environments such as those found on factory floors, outdoor enclosures or other challenging environments.

This Product is TAA & NDAA Compliant.

Features	Benefits
IEEE 802.3bt/at/af Compliant	Delivers higher power more efficiently by utilizing all four pairs of structured wiring. Increases maximum PSE output power to up to 60 Watts (Type 3) or up to 90 Watts (Type 4) PoE++ power
Supply up to 90 Watts Output	Support for higher power enables new applications such as PTZ security cameras, LED lighting or digital signage
Auto Power Reset (APR)	Automatically monitors and resets powered devices when unresponsive, reducing service dispatches for simple device resets
PoE Scheduling	Provides capability to enable or disable power to specific ports during designated days and times, contributing to energy conservation and cost savings
Up to 360 Watts PoE Budget	Higher PoE power to more devices allows up to 90 Watts on four ports, 30 Watts on all eight ports simultaneously or a combination for up to 360 Watts
Multi-gigabit technology, 2.5G Copper Access and 10G Fiber Uplink	Includes (4) 2.5G Copper PoE ports and (2) 1G/10G SFP+ ports to support bandwidth needs of new generation high-definition security cameras, wireless access points
Device Management System (DMS)	This unique set of value-added features and capabilities lowers overall cost, reduces downtime, and provides easier management and maintenance of the connected PoE network

### End-to-End Solutions



### Applications:

- IP cameras with PTZ, temperature control, washer/wipers or other advanced features
- Intelligent Lighting
- Wireless Access Points
- Intelligent Transportation System
- Digital Signage

### Markets:



Security & Surveillance



Building Automation



PoE Lighting



Wireless Access Points

# LANTRONIX



## Specifications

### Standards

- IEEE 802.3, IEEE 802.3u, IEEE 802.3z, IEEE 802.3ae, IEEE 802.3x, IEEE 802.3ad, IEEE 802.1D, IEEE 802.1w, IEEE 802.1s, IEEE 802.1Q, IEEE 802.1p, IEEE 802.1AB, IEEE 802.3af, IEEE 802.3at, IEEE 802.3bt, IEEE 802.3ah, IEEE 802.1ag, IEEE 802.3az, IEEE 1588 v2
- ITU-T Y.1731, ITU-T G.8031, ITU-T G.8032
- IEC62439-2

### Network Interface

- Store-and-forward switching architecture
- (4) 10/100/1000 Mbps and (4) 100/1G/2.5G RJ-45 ports; (2) 1G/10G SFP slots; (1) Console RJ-45 port
- Protocols: CSMA/CD
- MAC Address: 16K MAC Address Table
- Switching Capacity: 68 Gbps

### PoE Features

- IEEE 802.1AB LLDP-MED Configuration
- PoE Configuration
- PoE Scheduling
- Power Delay
- Auto Power Reset
- DHCP per Port
- Always on PoE

### Software

- DMS web manager for advanced configuration and management
- Management: Web Management, SNMP V1/V2c/V3, SSH, CLI
- LCP Trunking: IEEE 802.3ad Link Aggregation Control Protocol (LACP) Trunking and LACP-on-Air
- Multicast: Support IGMP Snooping V1/V2/V3, MVR, MLD Snooping V1/V2
- Quality of Service: Supports 8 hardware queues; Classification, Rate Limiting, Scheduling
- Security: ACLs (512 entries), Port Security, IP Source Guard, Storm Control, 802.1x, RADIUS, TACACS+, SSH, TLS, Secured Web, DHCP Snooping, Loop Protection
- Spanning Tree: Supports IEEE 802.1s MSTP, IEEE 802.1w RSTP and IEEE 802.1D STP Compliant
- VLAN: Port Based VLAN, IEEE 802.1Q tag-based, up to 4k VLAN entries, QinQ, MAC-based VLAN, Management VLAN, Voice VLANs, and Private VLAN
- Firmware Update through TFTP and HTTP/HTTPS
- IEEE 1588 v2 PTP
- Media Redundancy Protocol (MRP)
- Static Routing, IPv4/IPv6 Unicast
- Dynamic Routing, RIPv1/v2 and OSPFv2/3

### Internal Web Server

- Web content on local file system and updatable through ftp

### Environmental

- Operating: -40° to +75° C (DC input)
- Ingress Protection: IP30

### Power

- 13 Watts (without PoE) Power Consumption
- Max PoE Budget: 360 Watts
- Up to 90 Watts on (4) ports
- 30 Watts on all eight ports simultaneously or a combination
- 52 - 57VDC dual inputs Terminal Block

### Certifications

- FCC Class A; CE; NEMA TS-2, UL 2108
- Safety: EN62368-1, UL62368-1

### Dimensions

- Size: 130 mm (5.12 in) D
- 62 mm (2.44in) W
- 168 mm (6.61 in) H

### Warranty

- 5 years

### More Features

- IPv4/IPv6 static route
- RIPv1/v2 and OSPFv2/v3 dynamic routing
- Supports Jumbo Frame up to 9K bytes
- Authentication - RADIUS, TACACS+
- DHCP Relay, DHCP Snooping, DHCP Server
- L2/L3/L4 ACLs Support MAC, VLAN ID, or IP address, protocol, per port
- LLDP (Link Layer Discovery Protocol)
- ITU-T G.8031 Ethernet Linear Protection
- ITU-T G.8032 Ethernet Ring Protection Switching
- Rapid Ring for fast recovery
- IEEE 802.3az Energy Efficiency
- IP Source Guard, Port Security
- Port Mirroring
- Syslog

## Ordering Information

Part Number	Description
SISPM1242-582-LRT	(4) 10/100/1000 Mbps & (4) 100/1G/2.5G RJ-45 ports; (2) 1G/10G SFP slots; 52V - 57 VDC (Din Rail Bracket included)

Accessories Number	Description
SFP Modules	See <a href="https://lantronix.com">Lantronix.com</a> for Full SFP Portfolio
EDCA-DIO-01	Enclosure Door Contact Alarm
OCA-P181610	18x16x10" Polycarbonate Enclosure
25160	Input 90-264 VAC, 127-370 VDC Output: 48 ~ 55 VDC, 10A, 480 Watts
25104	Input: 85-264 VAC, 124-370 VDC Output: 48 ~ 55 VDC, 5A, 240 Watts
PS-DC-DUAL-5624T	Input: 100-240 VAC 56VDC + 24V output
WMBH-01	Wall Mount Bracket
DRBH-01	Din Rail Bracket