



# EDS3000PS

Device Server: Serial to Ethernet



## REMOTELY CONNECT AND MANAGE YOUR SERIAL DEVICES

The EDS3000PS is a compact office grade plastic enclosed hybrid Ethernet terminal/multi serial port device servers (8-16) for easy remote access and management of virtually any IT/networking equipment or edge devices like medical equipment, POS terminals, or security equipment. The EDS3000PS comes integrated with Lantronix cloud-based PercepXion™ software platform, providing comprehensive device life cycle management, enterprise application integration, and data analytics, all through a single pane of glass.

### Comprehensive Device Security Framework

EDS3000PS device server delivers an unprecedented level of intelligence and safety with SSL/TLS, AES, and SSH built-in. EDS provides enterprise-level security, allowing safe remote access and management from practically anywhere.

Lantronix core software carries 30 years of 'data-center grade' protection, so each networked device has the same level of security as corporate data center equipment and provides robust defenses to hostile Internet attacks.

### Easy Configuration

Setup is a breeze with Windows-based Lantronix Provisioning Manager, which can be used locally or remotely with the Lantronix PercepXion IoT Edge Solutions Platform. A "Cisco-like" command-line interface (CLI) simplifies configuration and control, making it easier to integrate edge devices or data center equipment into the network. EDS3000PS leverages the Lantronix Com Port Redirector™ virtualization software, allowing existing applications to work with the EDS with no code modifications.

### Centralized Device Management Platform

Monitor, manage, and control your devices from anywhere, at any time with the ready-to-use software platform web application. The easy-to-use platform provides software-defined automation with zero-touch provisioning across all of your devices and the capture of device telemetry data for event management and analytics.

### End-to-End Solutions



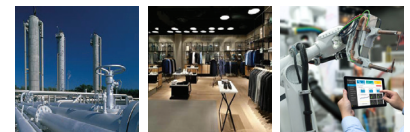
### Perfect For:



Energy

Cities

Medical



Industrial

Retail

Robotics

### EDS3000PS Highlights

- Quickly connect any device with a serial port to the network using robust SSH or SSL enterprise-level security
- Easily customize and enhance the EDS for your unique application
- Simple device setup, configuration and monitoring with powerful, industry-standard management tools, including Windows-based Lantronix Provisioning Manager and cloud-based PercepXion
- Sleek design, desktop or wall-mount, perfect for medical or other high visibility installations



## Features and Specifications

### Hardware

- CPU: Cortex A9
- 4 Gbit (512 MB) Flash
- 4 Gbit (512 MB) RAM
- On-board memory: 8MB Flash
- Ethernet 10/100/1000Mbps

### Serial Interface

- Software selectable data rates from 300 to 230K Baud
- Characters: 7 or 8 data bits
- Parity: Odd, Even, None
- Stop Bits: 1 or 2
- Modem Control Signals: CTS, RTS, DTR, DCD
- Flow Control: XON/XOFF (software), CTS/RTS (hardware), None

### Network Interface

- 10/100/1000Mbps Ethernet
- 8 or 16 ports, RJ45 software selectable serial ports
- Protocols: HTTP, HTTPS, FTP, TFTP, Telnet, TCP, UDP, DHCP, SSHv2, SSLv3, SNMP v2, Auto IP, RSS, ARP, ICMP, SYSLOG, AES, SMTP, DNS, SNTP

### Security

- SSL 3, TLS 1.0, TLS 1.1, TLS 1.2, TLS 1.3s
- MD5,SHA-1,SHA-2
- RSA, DSA and ECDSA
- Password protection
- IP address filtering

### Software

- Lantronix Provisioning Manager
- Secure Com Port Redirector
- Com Port Redirector™

### Management

- Internal web server, SNMP v1, SNMP v2, SNMP v3, Serial Login,
- Telnet SSH login, XML
- PercepXion™ IoT Edge Solutions Platform
- Upgradeable FW via the Web Manager, FTP or serial port

### Internal Web Server

- Customizable with CGI
- Web content on local file system and updatable through ftp

### Environmental

- Operating: 0° to 55° C (32° to 131° F)
- Storage: -40° to 70° C (-40° to 151° F)
- Relative Humidity: 5 to 95%, non-condensing

### Power

- 100-240VAC, 50 to 60 Hz IEC-type cord
- 20 Watts

### Regulatory Approvals

- FCC, IC, CE, UL/CB

### Dimensions

#### EDS3008PS

- Size: 12.8cm (5.02 in) L x 22.7 cm (8.92 in) W x 4.3 cm (1.7 in) H
- Weight: 0.499 kg (1.1 lb)

#### EDS3016PS

- Size: 12.8cm (5.02 in) L x 22.7 cm (8.92 in) W x 6 cm (2.36 in) HH
- Weight: 0.616 kg (1.36 lb)

### Warranty

- 2 year limited

## Ordering Information

Part Number	Description
EDS3008PS1NS	EDS3000PS secure device server, 8-port serial, 1GbE Ethernet, 100-240 VAC, Desktop, Normal power cord included
EDS3016PS1NS	EDS3000PS secure serial device server, 16-port serial, 1GbE Ethernet, 100-240 VAC Desktop, Normal power cord

Accessories Number	Description
ACC-200.2066A	RJ45 to DB25M cable adapter (DTE Device)
ACC-200.2067A	RJ45 to DB25F cable adapter (DTE Device)
ACC-200.2069A	RJ45 to DB9M cable adapter (DTE Device)
ACC-200.2070A	RJ45 to DB9F cable adapter (DTE Device)
ACC-200.2071	RJ45 to DB9M cable adapter (DCE Device)
ACC-200.2072	RJ45 to DB9F cable adapter (DCE Device)
ACC-200.2073	RJ45 to DB25M cable adapter (DCE Device)
ACC-200.2074	RJ45 to DB25F cable adapter (DCE Device)
ACC-500-153	Cable; RJ45 Loopback Adapter
ADP010104-01	Cable; rolled serial adapter, 0.1m (0.33 ft)
ACC-200.0062	Cable; RJ45, 2 m (6.6 ft)
ACC-200.0063	Cable; RJ45, 5 m (16.4 ft)
ACC-200.0064	Cable; RJ45, 10 m (32.8 ft)
Cable; RJ45, 10 m (32.8 ft)	10 m (32.8 ft)5 Cable; RJ45, 15 m (49.2 ft)