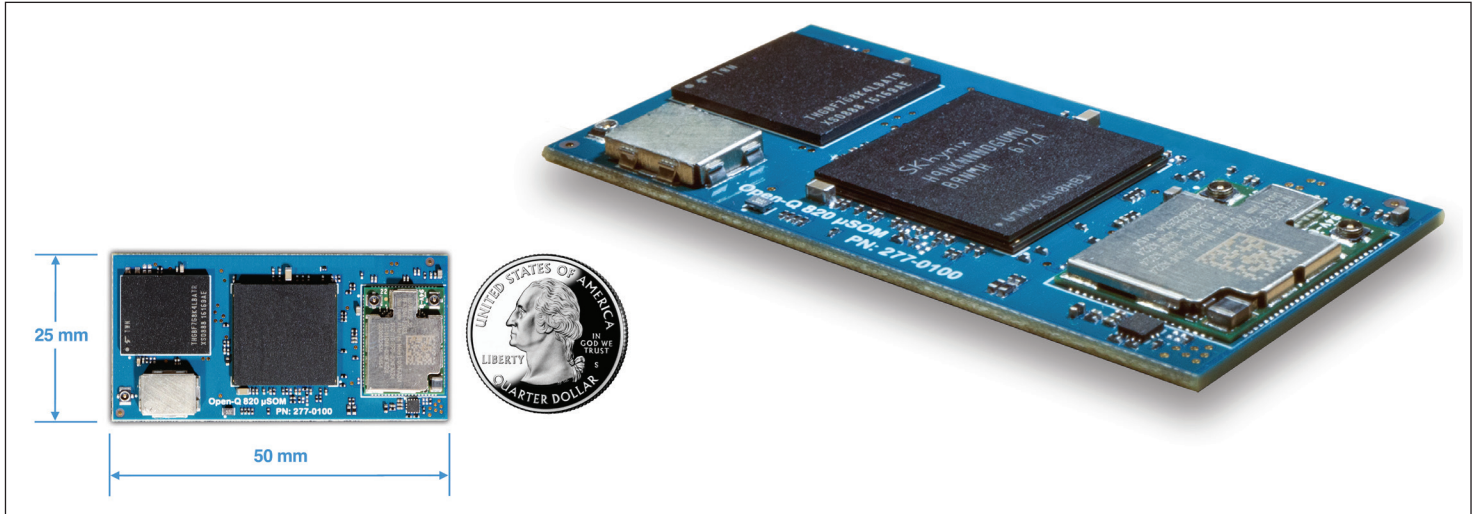


Open-Q™ 820 μSOM (micro System on Module)

Based on the Qualcomm® APQ8096 SoC



Lantronix's Open-Q™ 820 μSOM is our best combination of power and performance in an ultra-compact, production ready, pre-certified SOM. The 820 μSOM features advanced technology and an extensive peripheral set, providing the ideal platform for creating high performance embedded, IoT and mobile devices. Despite its ultra-small size, the SOM offers seamless connectivity to external memory, sensors and a host of other peripheral devices via a comprehensive list of configurable IO. Leverage our best power—performance combination in a class leading form factor with support for a variety of Android™ and Linux® releases to fast track your product development.

Lantronix® also offers a supporting development kit for the 820 μSOM to allow easy evaluation of the SOM and to fast-track new product development.

Key Features

- Qualcomm® APQ8096 SoC
- 3GB LPDDR4 and 32GB UFS
- FCC/IC Pre-certified Wi-Fi/BT Module
- Qualcomm® IZat™ Gen 8C GNSS location solution
- Battery Charging support
- Ultra-compact 50mm x 25mm
- Android™ 9, Debian Linux®

Applications

- Wearable cam / Action cam / 360 degree cam
- Smart home / IP cam / Security cam
- Industrial machine vision camera
- Stereo-vision camera
- Retail analytics camera
- Robotics / drones

Engineering Services:

We provide a full solution – our unparalleled engineering expertise and product development skills deliver innovative products that are cost-effective and can jumpstart your Go-to-Market timeline.

Our business model offers turnkey product development services, or we can augment your team in specific areas of development. The choice is yours.

Key development expertise in:

- Camera development and tuning
- Voice control
- Machine learning
- Mechanical & RF design
- Thermal & power optimization

IoT Product Development made easy



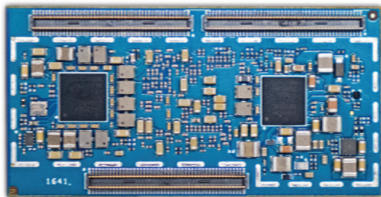
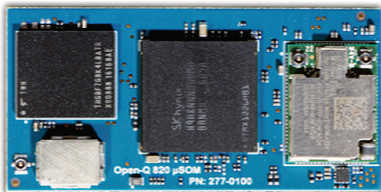
Lantronix Open-Q™ 820 μSOM

Hardware Specifications:

Open-Q™ 820 μSOM	
• Processor	Qualcomm® APQ8096 built on 14nm technology Qualcomm® Kryo™ Quad-Core, 64-bit 2.15GHz Qualcomm® Adreno™ 530 GPU OpenGL ES 3.1, OpenCL 2.0 Full, DirectX 11, Path Rendering Qualcomm® Hexagon™ 680 DSP
• Memory/Storage	3GB LPDDR4 RAM (1866MHz) 32GB UFS 2.0 Flash 1-lane, gear 3
• Wireless	Pre-certified Wi-Fi 802.11a/b/g/n/ac 2.4/5Ghz 2x2 MU-MIMO (QCA6174A) with U.FL antenna connector Bluetooth 4.2 + BLE
• Location Services	Qualcomm® IZat™ Gen 8C— GPS, GLONASS, Compass (WGR7640) with U.FL antenna connector
• LCD/Touchscreen Interface	2x MIPI-DSI 4-lane, up to 4K Ultra HD 60fps 1x HDMI 2.0 up to 4K @ 60fps
• Camera Interface	Qualcomm® Spectra™ ISP Up to 28MP with 3x 4-lane MIPI CSI and dual ISPs
• Video	Video Capture up to 4K Ultra HD at 30fps Video Playback 4K Ultra HD H.264 (AVC) and H.265 (HEVC)
• Audio	1x SLIMbus and 2x I2S, or 3x I2S Qualcomm® Fluence™ HD with Noise Cancellation (optional)
• Power/Battery Management	Power management and battery charging (PM18996)
• I/O	1x USB 3.0 client or host, 1x USB 2.0 client or host, 2x PCIe v2.1, 8x BLSP configurable ports (I2C, SPI, UART or GPIO), 1x SDIO, LED driver outputs
• Operating Environment	Input 3.6V to 4.2V Operating Temperature -10°C to +70°C 3x 100 pin board to board connector 50mm x 25mm

Software:

• OS Support	Android™ 9, Android™ 8, Android™ 7, Debian Linux® *Note that all hardware features may not be supported by all SW versions — see latest SW release notes for details
---------------------	---



Purchasing Information:

• Open-Q™ 820 μSOM	PN: QC-DB-I10004
---------------------------	------------------

Alternate SOM configurations available by special order (minimum order quantities apply) - e.g. different memory size, etc. Contact sales to discuss your specific needs today.

Contact Information:

Americas

800.422.7055
americas_sales@lantronix.com
www.lantronix.com
NASDAQ: LTRX

Europe

+31 (0) 76.52.3.6.74 4
eu_sales@lantronix.com

Asia/Pacific/Japan

+852 3428.2338
asiapacific_sales@lantronix.com
China: +86.21.6237.8868
India: +91 994-551-2488
Indonesia: +91 994-551-2488
Japan: +81.8.50.1354.6201

Certifications



© 2021 Lantronix, Inc. All rights reserved. Lantronix is a registered trademark of Lantronix, Inc. in the U.S. and other countries. Open-Q is a trademark of Lantronix, Inc. Qualcomm APQ8096, Qualcomm Adreno, Qualcomm Fluence, Qualcomm Hexagon, Qualcomm IZat, Qualcomm Kryo, and Qualcomm Spectra are products of Qualcomm Technologies, Inc. and/or its subsidiaries. Qualcomm, Adreno, Fluence, Hexagon, IZat, Kryo, and Spectra are trademarks of Qualcomm Incorporated, registered in the United States and other countries. All other trademarks are the property of their respective owners. Specifications subject to change without notice. Not all features listed may be supported in software. Open-Q 820 μSOM v4.0