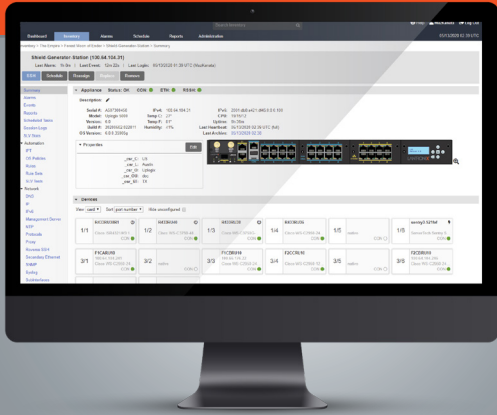


Lantronix Control Center

Remote Environment Management



CENTRALIZED CONTROL FOR ADVANCED OUT-OF-BAND MANAGEMENT

Manage LM-Series advanced out-of-band devices and connected network infrastructure

Web-based GUI for real-time data to manage, configure, and control network devices and servers; define custom automated management actions; and ensure compliance reporting

Deployed in the NOC, the Lantronix Control Center delivers real-time monitoring and management capabilities, offering a unified view of what's occurring in a distributed infrastructure. As an element manager for LM-Series devices, the Control Center also serves as the gateway between the LMs in the network and existing IT management systems.

Lantronix Control Center is deployed on a pre-configured, dual CPU, rack-mountable server, and includes an embedded Oracle database engine. It is also available as a VM to run on a customer-provider server running VMware or Azure. Consult with Lantronix LEVEL Services for minimum requirements for a UCC VM installation.

Control Center Capabilities

- **Single interface for centralized management** | Consistent, enterprise-wide point of control for configuring administrative policies for and scheduling all maintenance, management, configuration, and recovery tasks performed by LM-Series devices. Simple point-and-click interface for executing enterprise-wide management tasks, such as distributing patches, resetting passwords or performing configuration changes.
- **Seamless Integration with centralized systems and network management consoles** | Serves as a point of integration with other management systems and solutions; alarms and events appear as if they came from the managed device itself.
- **Flexible Reporting** | Robust and customizable reporting of event, alarm, and device statistics, network service level measurements and the operational status of your LM-Series devices across the enterprise
- **Extensible Automation** | Simple interface for users to define custom actions for configuration management & recovery: archives and stores configuration files for all managed devices and can quickly restore good working configuration file to a managed device via the LM-Series device.
- **Compliance Reporting** | Archives all session logs from LM-Series devices and Control Center for auditing and compliance purposes
- **Persistent Connectivity** | Serves as a central proxy for seamless in-band or out-of-band communication with LM-Series devices.

For use with Lantronix LM-Series:

- LM83X
- LM80

Perfect For:



Data Center



Branch Office



Remote Sites

Lantronix Control Center Options

- **Control Center - Enterprise**
Unlimited LM-Series devices
- **Control Center - Standard**
Licenses for up to 50 LM-Series devices
- **Enterprise High Availability License**
Requires two Enterprise licenses
- **Virtual Control Center**
Available for VMware and Azure

Key Features & Capabilities

The Lantronix Control Center enables automated remote management by providing a centralized point of control for all LM-Series devices and managed network infrastructure deployed throughout your distributed IT environment.

Feature	Capability
Access	
Secure Access	Provides access via SSL browsers with remote authentication to TACACS or RADIUS. Enables access to LM-Series devices and connected managed devices without the need for remembering location or network address of each device.
Hierarchical Views	Organizes the LM-Series deployment into an inventory hierarchy based on business unit, geographical location, or other customer-defined parameters
Reporting	Generates detailed reports using built-in templates or using customized templates based on organizational requirements; provides on-demand reports and/or sends auto-generated, scheduled reports via email
Statistical Data	Facilitates access to detailed data from each LM-Series device—such as device monitors, alarms, events, service level verification tests, and environmental readings; this data is available for long-term trending, baselining, forensics, and reporting
Control	
LM-Series Devices	Archives and stores LM-Series software updates. Centrally manages the configuration of all LM-Series devices; new LM-Series deployments organized into groups automatically assume hierarchically inherited settings
Device Management	Archives and stores POST records and debug data (e.g. – Cisco “show tech”) images and configuration files for managed devices
Automation	Enables creation of rules to monitor device state and defines actions for LM-Series devices to perform routine administrative tasks such as maintenance, configuration and recovery
Alarms and Events	Collects device alarms and events from LM-Series devices and displays for administrators. Sends alert messages to users based on customer-defined roles and policies
Integration	Sends alarms and events to other management systems as if they came from the managed device itself causing minimal disruption to the existing infrastructure. Sends alert messages to users based on subscription to specific devices, interfaces, or LM-Series devices
Enforce	
Authentication	Manages usernames, passwords, and account details for all LM-Series devices. Deploys AAA settings to all LM-Series to maintain a single security policy
Authorization	Manages granular access control at individual LM-Series devices or group levels
Security Policies	Logs and archives Control Center user sessions for review. Archives LM-Series session logs for auditing purposes

System Specifications

Hardware Platform

System

- Dual Quad-Core 2.3GHz Xeon processors
- 8GB RAM
- 6 x 146GB hard drives (total storage for application & data)
- Red Hat Enterprise Linux
- Self-contained (zero-administration) embedded Oracle® Enterprise Edition (10G) database
- Automatic, hot-backup of management data
- SNMP interface for integration with common network management systems

Dimensions/Weight

- 2U rack-mountable chassis
- 29.3" (74.4 cm) D x 17.5" (44.4 cm) W x 3.4" (8.6 cm) H (with bezel attached)
- 55.2 lbs (25.1 kg)

Operating Environment

- Operating Temperature: 10° C to 35° C (50° F to 95° F)
- Operating Relative Humidity: 20% to 80% non-condensing

Power

- AC configuration with standard redundant 750W hot-plug auto-switching universal 110/220V AC power supplies

Virtual Platform

- Consult with LEVEL Services for minimum requirements for a Lantronix Control Center VM installation.

Product SKUs

Part Number	Description
61-9600-10	Control Center Software, 10 LM-Series Devices
61-9600-50	Control Center Software, 50 LM-Series Devices
61-9601-00	Control Center Software, 100 LM-Series Devices
61-2011-02	Control Center - Standard, Dell R440 HW w/ LMS for up to 10 LM-Series Devices
61-2011-06	Control Center - Standard, Dell R440 HW w/ LMS for up to 50 LM-Series Devices
61-2003-04	Control Center Enterprise High Availability License (Requires 2 licenses)