

Lantronix EMG™ 7500

Edge Management Gateway



COST EFFECTIVE
OUT-OF-BAND MANAGEMENT
AN EDGE SOLUTION FOR BRANCH OFFICES
AND REMOTE SITES

The Lantronix® EMG™ 7500 - Edge Management Gateway is the newest addition to the EMG family of edge solutions for branch offices, remote locations, retail stores where small port count, fixed FRU's and integrated cellular connectivity is needed at a cost-effective price.

Cost-Effective Secure Connectivity - Anytime, Anywhere

The EMG7500 offers a low port count (4 or 8 ports) in a slightly smaller size than the EMG8500 for customers with space and cost limitations. This edge management gateway is perfectly suited for branch offices and unmanned locations, such as ATM's, cell towers, etc. This cost-effective member of the EMG family has fixed FRU's, integrated cellular connectivity and internal flash memory.

Quick Recovery from Downtimes

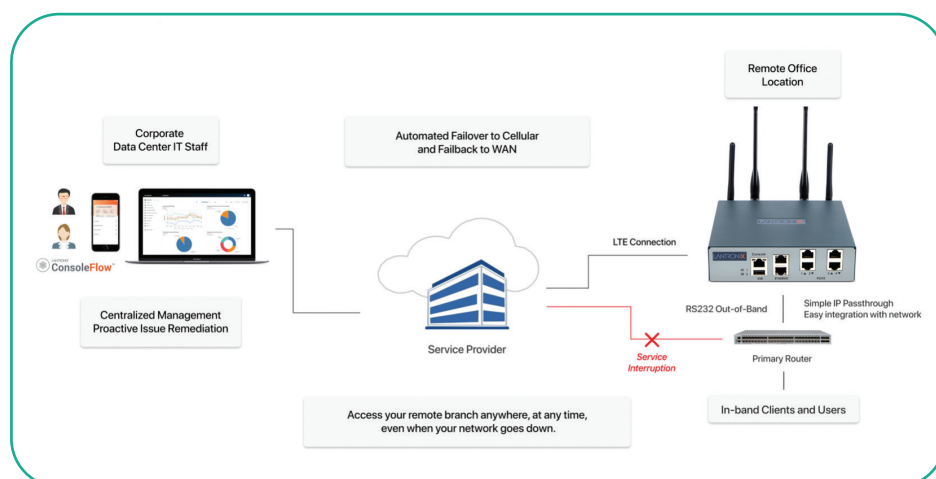
An integrated automatic fail-over/fail-back mechanism allows users to connect to their network equipment even when the primary network connection is congested or unresponsive. The EMG7500 can fail-over to a cellular 4G/LTE connection where all global carriers are supported with services such as Private APN, VPN access, public, and private IP addressing. Network Performance Monitoring with support of IPSLA simulation traffic can ensure continuous and reliable network communication and help mitigate Lights Out scenarios.

Easy Centralized Management - ConsoleFlow™

ConsoleFlow™ is Lantronix's on-premise and cloud-based management platform for all deployed Lantronix edge management gateways and connected IT equipment. It offers a single pane of glass for centralized management and automated monitoring with real-time notifications. Mobile access from any iOS or Android platform provides secure access to your IT equipment.

EMG™ 7500 Features

- Software-defined networking
- Always-on secure out-of-band access
- 4G/LTE cellular failover and failback
- Intelligent Centralized Management
- Policy-based device and feature access
- Collect and store asset telemetry data
- Secure REST APIs to access data
- Automation with Python scripting
- Cisco IP SLA performance monitoring
- Data securely encrypted in-flight and at rest



Features and Specifications

Device Access

- In-Band: 2 Ethernet RJ45 ports (10/100/1000Mbps), Wi-Fi (*Optional on certain models)
- Out-of-Band: Internal POTS MODEM (*Optional on certain models), internal LTE Cellular Radio

Security and Authentication

- Enterprise-grade security
- Secure Sockets Layer (TLS v1, v1.1, v1.2, v1.3)
- Packet filtering (firewall)
- Per port user permissions
- Configurable user/group rights
- Remote authentication: LDAP/AD, RADIUS, Kerberos, TACACS+, NIS
- Local username/password
- NIST-certified implementation of AES (Advanced Encryption Standards) as specified by FIPS-197
- FIPS 140-2 compliant cryptography (Certificate #1878)

Serial Device Port Access

- Software programmable reversible pinouts on device ports Serial RS232
- Telnet/SSH to EMG command line interface
- Telnet/SSH/RAW-TCP direct to an IP address
- HTML5 support for Java-free web terminal SSH access to console ports
- Multiple Telnet/SSH sessions
- Simultaneous user access to the same console port
- Customizable multi-level user menus
- RJ45 and/or USB device ports Serial RS232 up to 8 ports, USB type A up to 8 ports, or mix RS232 4 ports and USB 4 ports (*Optional on certain models)
- Automatic port-initiated connections to a network host or outbound SSH connections to neighboring equipment
- Enable CLI terminal logins from any device port
- SD card and USB for port logging

Data Capture and Notification

- Port buffering—256 KB per port
- Port logging to local files, syslog, USB thumb drive, SD card, and NFS share
- System, audit and port logging
- Event notification via email, SNMP or Syslog entry
- Character string recognition

Management

- Quick setup and configuration web interface (TLS)
- CLI setup script
- CLI (Telnet, SSH, WebTerminal or direct console port access)
- SNMP (MIB II) —v1, v2, v3 compatible, custom MIBs
- RPM (remote power management) feature to control and monitor industry leading PDU & UPS devices
- Active user list display, port monitoring and timeout
- Diagnostics and port status counters
 - Performance monitoring utility
 - Packet generation utility
 - Network trace utility
- Optional digital I/O and special integration with Sensorsoft environmental sensors
- Local subnet search for other Lantronix console manager solutions
- Maximum 15 users per device port

Additional Protocols Supported

- DHCP and BOOTP for dynamic IP address assignment
- NTP for time synchronization
- FTP, TFTP, SFTP, SCP client for file transfers
- DNS IP address name resolution
- SSH, TLS, SSL, Telnet and TCP port connections in/out of every device port, UDP, PPP with PAP/CHAP, NFS and CIFS for data storage
- StrongSwan IPsec VPN client
- RIP and RIPv2
- IPv6 Addressing supported

Interfaces

- Front Panel, Console and Logging: 1 RJ45 Port Serial RS232, 1 USB Port Host type A
- Front Panel, Connectivity: 2 RJ45 Ports Ethernet (10/100/1000Mbps)
- Front Panel, I/Os: 4 RJ45 Ports Serial RS232 300 to 921600 bps, or 4 USB Ports Host Type A
- Back Panel Logging: 1 microSD slot
- Back Panel Connectivity: LTE/4G Cellular Radio with antennas and microSIM slot, optional Wi-Fi and antennas
- Back Panel, I/Os: 4 RJ45 Ports Serial RS232 300 to 921600 bps, or 4 USB Ports Host Type A

Environmental Sensors Support

- Plug and go connectivity support for sensors and accessories used to measure/detect temperature, humidity, power availability and dry-contact closures

Memory

- 1/2 GB Internal NAND Flash
- 1/2 GB Internal DRAM
- External Storage: microSD slot for up to 128 GB Flash

Power

- Desktop Power Supply shipped with unit, or external 9-30VDC
- Power Usage: 20W

Central Management

- Compatible with the Lantronix ConsoleFlow™ central management software

Environmental

- Temperature:
 - Operating: 0 to 50° C (32 to 122° F), 30 to 90%RH, non-condensing
 - Storage: -20 to 80° C (-4 to 176° F), 10 to 90% relative humidity, non-condensing

Physical

- Front-mid-rear mounting brackets
- Dimensions (L x W x H): 163x145x43mm (6.42x5.71x1.7 in.)
- Weight: TBD maximum, depending on options

Warranty

- 3 year limited warranty (extended warranty and support options available)

Certifications

- FIPS 140-2 (planned)
 - Pending Compliances: FCC, CE, IC, UL/CB, IPv6 ready Certified
- * For addition regional certifications, ask your regional Lantronix sales associate for details.

How to Order:

Pick a Connectivity module.

Internal LTE Cellular Radio is always available.

Future Models: Wi-Fi (*Optional on certain models), or POTS MODEM (*Optional on certain models)

If user selects 8 port I/O module, then WiFi or POT MODEM option is NOT available. The configuration will have 4 I/O ports on the front and the additional 4 I/O ports on the back.

I/O Configuration Options:

- 4 Port RS-232
- 4 Port USB
- 8 Port RS232
- 8 Port USB
- 4 Port RS232 + 4 Port USB



Contact Information:

Americas

800.422.7055
americas_sales@lantronix.com
www.lantronix.com
NASDAQ: LTRX

Asia/Pacific/Japan

+852 3428.2338
asiapacific_sales@lantronix.com

China: +86.21.6237.8868

India: +91 994-551-2488

Indonesia: +91 994-551-2488

Japan: +81.8.50.1354.6201

Europe

+31 (0) 76.52.3.6.74 4
eu_sales@lantronix.com