



xPico® 250 Evaluation Kit Quick Start Guide

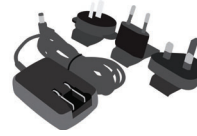
WHAT'S IN THE BOX



xPico 250 Evaluation Board



u.fl to RP-SMA Adapter Cables and Antennas

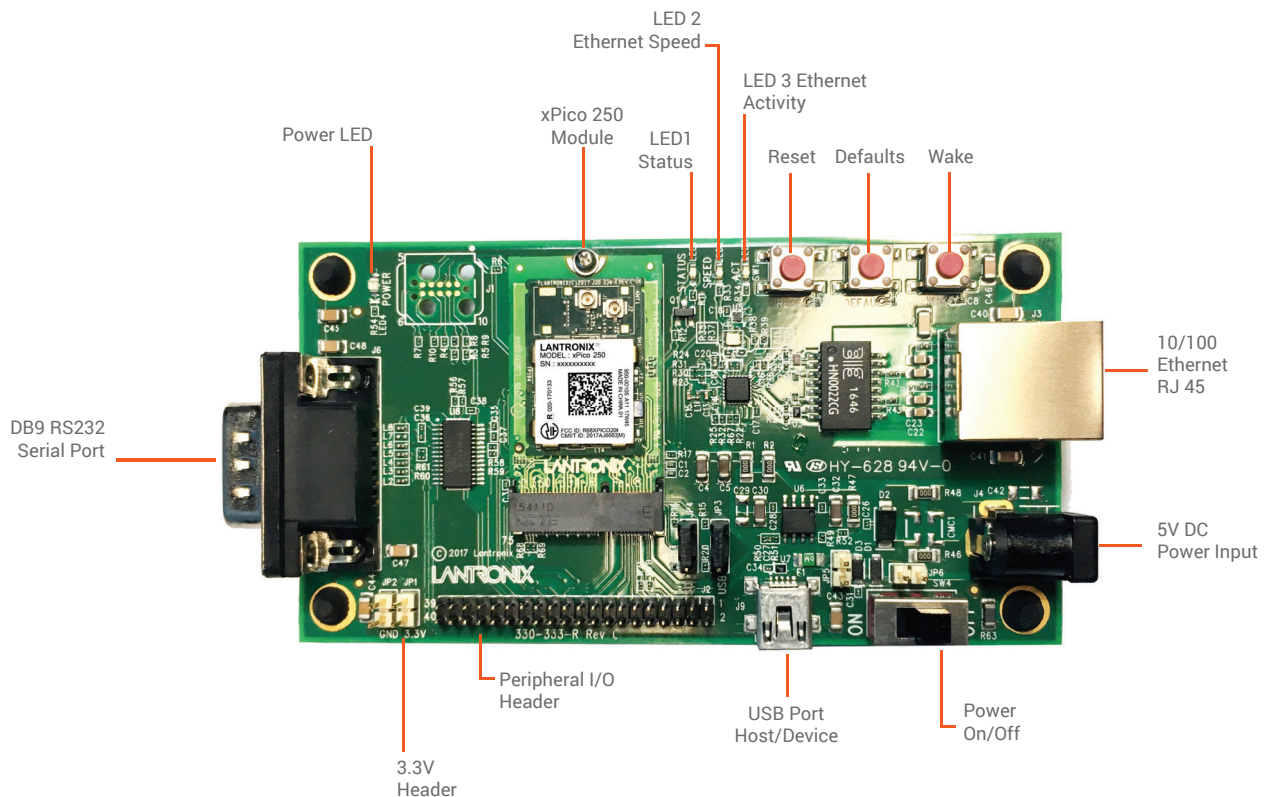


5V Power Supply with Regional Adapters



Firmware & License Agreement

1. HARDWARE OVERVIEW



2. HARDWARE INSTALLATION

- 2a. Attach the antenna(s) to the evaluation board.
- 2b. Supply power to the evaluation board by plugging in the included power adapter to the 5V DC Power Input (shown above).
- 2c. Move the ON/OFF power switch to ON.
- 2d. Proceed to the next page for instructions on how to configure the xPico 250 using the web manager UI.





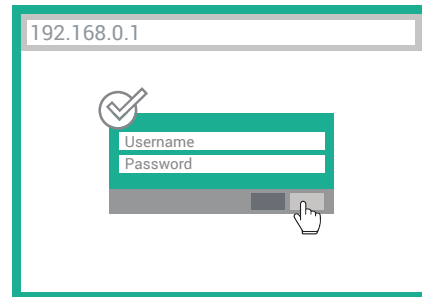
xPico® 250 Evaluation Kit Quick Start Guide

3. CONNECT TO WEB MANAGEMENT CONSOLE

The steps below outline how to access the web management console to begin configuring the xPico 250 gateway.



3a. Connect to the network using the unique xPico 250 SSID. This number refers to the last 6 digits of the serial number printed on the module. See highlighted section. The default password for this Wi-Fi Soft AP is **PASSWORD** (case sensitive).

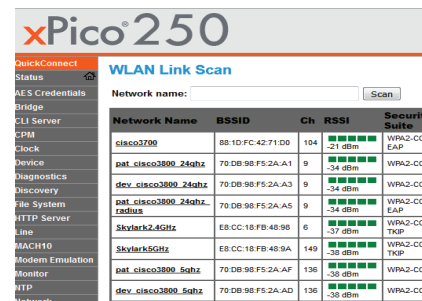


3b. Connect to 192.168.0.1 using your web browser. The default **USER ID = admin** and **PASSWORD = PASSWORD** (both case sensitive).

4. INITIAL CONFIGURATION



4a. Once logged in, click the Quick Connect menu to continue with the configuration of the xPico 250 and connect to the Wi-Fi network.



4b. On the Quick Connect Page, the wireless client interface can be configured. The xPico 250 can now connect to a network from the list of available wireless networks.

5. COMPLETE THE CONFIGURATION

Continue with the rest of the unit configuration using the Web Management Interface (UI). Context-sensitive help is available in-line within the Web UI. The unit can also be configured using the Command Line Interface (CLI). The CLI is accessible via the serial port. For detailed instructions, please refer to the xPico 200 Series User Guide:

docs.lantronix.com/products/xpico-200/

! **KEEP YOUR DEVICE SECURE.** Please change the default Soft AP SSID password and administrator password before proceeding further. From the "Network" menu in the Web UI, follow this path: **ap0** → **Link** → **Configuration** to set the AP password. Click OK to apply these new settings. Next, from the "User" menu in the Web UI, select admin user and enter a new password. Click OK to apply these new settings. Reboot and continue with the rest of the configuration.

TECHNICAL SUPPORT

For technical support queries, visit <http://www.lantronix.com/support>.

LATEST FIRMWARE

For the latest firmware downloads, visit <http://www.lantronix.com/support/downloads>

