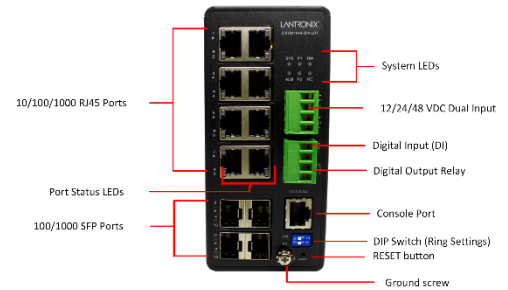


SISGM1040-284-LRT

Hardened Managed Switch, (8) 10/100/1000Base-T + (4) 100/1000Base-X SFP Slots

Quick Start Guide

The SISGM1040-284-LRT provides eight 10M/100M/1G RJ45 ports, four GbE SFP ports and one RJ45 console port. SISGM1040-284-LRT provides high performance and environment flexibility for industrial applications.



Caution: See the Install Guide for important Safety Warnings and Cautions, Features and Benefits, Ordering Information, Specifications, Safety Instructions, Front Panel and LED Descriptions, Installation, Grounding, DIP Switch Settings, Power Supply information, Connecting Power, CONSOLE Port, CLI Initialization, Troubleshooting, Compliance, Warranty, and Rapid Ring operation.

Installation

Installation involves switch mounting, grounding, cable connection, configuration, and power connection information. **Caution:** Read “Safety Warnings and Cautions” in the Install Guide before proceeding. Verify the box contains one Managed Ethernet Switch, one DIN-Rail Clip, three DIN-Rail Clip Screws, one Console Cable, one Quick Start Guide, one support postcard, and one Power Supply (optional; sold and packaged separately). Contact your sales rep if you did not receive these items. Save the packaging for possible future use.

DIN Rail Mounting: 1. Screw the DIN-Rail bracket on with the bracket and screws in the accessory kit. 2. Hook the unit over the DIN-Rail. 3. Push the bottom of the unit towards the DIN-Rail until it snaps into place.

Wall Mounting: 1. Screw on the wall-mount plate with the plate and screws in the accessory kit. See the Install Guide for details.

Ethernet Interface (RJ45 Ethernet): The switch provides two types of electrical interfaces: RJ45 and optical (mini-GBIC). To connect to a PC, use a straight-through or a cross-over Ethernet cable. To connect the SISGM1040-284-LRT to an Ethernet device, use UTP (Unshielded Twisted Pair) or STP (Shielded Twisted Pair) Ethernet cables. See the Install Guide for pin assignments.

Ethernet Interface (Fiber, SFP): For a 100 Mbps fiber port available, prepare the LC connectors or SC connectors (with the use of an optional SC-to-LC adapter). For the 1000 Mbps fiber ports, use mini-GBIC SFPs. These accept plug in fiber transceivers that typically have an LC style connector. They are available with multimode, single mode, long-haul or special-application transceivers. See the Install Guide for **Warnings** and **Cautions**.

Ground Screw: The front panel grounding screw can be used for grounding. Run the ground connection from the ground screw to the grounding surface before connecting devices. **ATTENTION:** This case must be earth grounded. No DC input may be earth grounded. Use an Isolated Power Supply.

RESET button: Press to reboot the system without removing power.

DIP Switch: The front panel RM/CPL DIP switch lets you set Ring Settings. See “Hardware Setting and Status for Rings” in the Install Guide. Note that you can also configure Ring settings via the Web UI and the CLI.

LEDs: See the “LED Descriptions” in the Install Guide.

Console Port: is for local management by using a terminal emulator or a computer with terminal emulation software. Settings: Baud rate: 115200bps. 8 Data bits, 1 Stop bit. Priority: None. Flow control: None. To connect the host PC to the console port, an RJ45 (male) connector-to-RS232 DB9 (female) connector cable is required. The RJ45 connector of the cable is connected to the Console port of the SISGM1040-284-LRT. The DB9 connector of the cable is connected to the PC COM port.

Power Supply: **ATTENTION:** This case must be earth grounded. No DC input may be earth grounded. Use Isolated Power Supply. **Power Connection Warning:** Connect the power supply to the switch first, and then connect the power supply to power; otherwise catastrophic product failure may occur. **1.** Verify that power is off to the DC circuit that you are going to attach to the switch PoE DC-input connector. This can be either of the two power supplies (AC-input or DC-input) or site source DC. **2.** As an added precaution, place an appropriate safety flag and lockout device at the source power circuit breaker, or place a piece of adhesive tape over the circuit breaker handle to prevent accidental power restoration while you are working on the circuit. **Power Disconnection:** To disconnect power from the switch after a good boot: **1.** Turn off power to the switch. **2.** Disconnect the cables. Various power supply models are available from Lantronix (sold separately). **Warning:** You must use an isolated power supply for Lantronix to honor the switch warranty. Lantronix provides Power Supply 25165, Power Supply 25130, SPS-UA12DHT and PS-DC-DUAL-5624T. Each power supply model is described in the Install Guide.

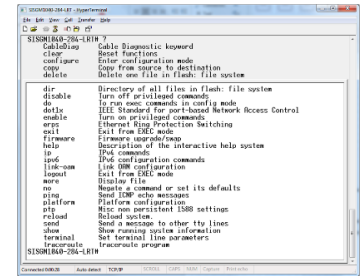
Connecting Power: The switch can be powered from two power supplies (input range 12V ~ 48V). Insert the positive and negative wires into the **V+** and **V-** contacts on the terminal block and tighten the wireclamp screws to prevent the wires from being loosened. **Note:** Make all cable connections before connecting Power.

Power Connector (4-Pin Terminal Block): **Input:** DC 12-48V. **P1 +/-** Power Input 1 plus and minus. **P2 +/-** Power Input 2 plus and minus. **ALM** Alarm Relay Output.

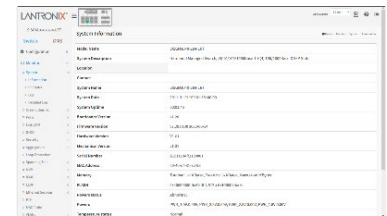
Connecting the DI/DO (Digital Input / Digital Output) Relay: **1.** Insert the negative (ground)/positive DI/DO Relay wires into the + and - terminals, respectively. **2.** Use a small flat-blade screwdriver to tighten the wire-clamp screws on the front of the Terminal Block connector. **3.** Insert the Terminal Block connector prongs into the Terminal Block receptor. See the DI/DO Use Case in the Install Guide.

Connect and Log In via CONSOLE Port: You can log on to the switch with the username and password. The default CLI user name and password is **admin**. You should change the password as soon as possible.

1. Connect a PC to the SISGM1040-284-LRT Ethernet port (RJ45 Ethernet port).
2. In Telnet/SSH, enter the command `telnet 192.168.1.77`.
3. Login with default Username (**admin**) and Password (**admin**).
4. Change the IP with the CLI commands in the CLI Reference.



Connect and Log In via Web Browser: After initial power up, perform the initial switch configuration using a web browser. To begin the initial configuration stage, change your PC's IP address and subnet mask so the PC can communicate with the switch. After changing PC's IP address, you can access the switch's Web GUI using the switch's default IP address of 192.168.1.77. The default Subnet Mask is 255.255.255.0. The default Username and Password are **admin**. You should change the password as soon as possible. See the Web User Guide for more information.



Related Documentation: SISGM1040-284-LRT Install Guide 33808, Web User Guide 33809, CLI Reference 33810, API User Guide, 33827. © 2021-2024 Lantronix, Inc. All rights reserved.



Scan for product information
<https://www.lantronix.com/mylantronix/>

Contact Us: Toll Free: 800-526-8766 |
 Phone: 949-453-3990 | Fax: 949-453-3995 |
[Technical Support](#) | [Sales Offices](#)