

SISPM1040-382-LRT Managed Hardened Fast Ethernet Switch

Quick Start Guide

The SISPM1040-382-LRT is a managed PoE switch for connecting and powering devices in challenging environments. Two gigabit speed combo ports are provided, allowing copper or fiber SFP uplink ports. The two uplink ports can also be used in a redundant ring for maximum network reliability. The switch has a PoE power budget of 240 Watts, provides up to 30 Watts per port on all ports simultaneously, has redundant input power connections, and a fault alarm relay to ensure safe reliable operation in temperatures between -40°C and +75°C without SFPs. See the full User Guide for important information on Product Alerts, Hardware, LEDs, Cabling, SFPs, Web Management, Login, Command Line Interface (CLI), Technical Specifications, Power Supply specs, Service, Warranty & Compliance, and Regulatory Agency Information.



Hardware Installation

DIN-Rail: Each switch has a DIN-Rail kit that can be mounted on the rear panel. Mount the DIN-Rail Clip. **Wall Mount:** A wall mount bracket can be used to mount the switch on a panel or wall. The bracket is mounted to the switch using the enclosed screws.

PoE Ports: Port 1 ~ 8 contain PoE+ function. Compliant with IEEE802.3at PoE+ specifications. Compliant with 802.3at in Environment A when using an isolated power supply. For 802.3at Environment B applications: 1) use an isolated AC/DC power source, e.g. TN 25080, and/or 2) use mid-span injector (s), e.g. MIL-L100i, L1000i-at, between this switch's PSE port and link partner PD port.



SFPs: The switch has fiber optical ports with SFP connectors. See the Transition Networks [SFP page](#) for more information. See the related SFP manual for safety cautions and warnings.

Status LEDs: Power (PWR, PWR1, PWR2), Ring Master (R.M.), Ring, Fault, Port Link/Act, and Port PoE.

Reset button: Push the front panel **Reset** button for 2 to 3 seconds to reset the switch. Push the **Reset** button for 5 seconds to reset the switch to its Factory Default settings.

Power Connection: Connect wires between the + terminals on the power supply and the + terminals on the switch terminal block. Do the same with the – terminals.

Maintain correct polarity (not reverse polarity protected). **Proper Earth Ground Isolation:** For PoE applications, to achieve full isolation between PSE (switch port) and load (PD), the switch must be powered with a 1500 VAC / 2250 VDC isolated power supply. For applications requiring additional isolation, 1) use an isolated AC/DC power source, e.g. TN 25104, and/or 2) use mid-span injector (s), e.g. MIL-L100i, L1000i-at, between this switch's PSE port and link partner PD port. In addition, earth ground should be connected to the switch chassis.

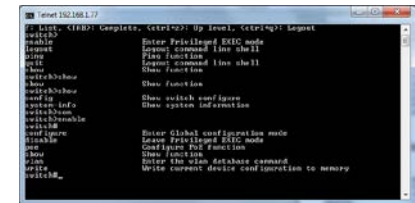
WARNING: This case must be earth grounded. No DC input may be earth grounded. Use an Isolated Power Supply. See the full User Guide for important details and **Cautions** and **Warnings**.

Management Software

The SISPM1040-382-LRT can be managed via the Web, TELNET, Console or other third-party SNMP software.

Console Cable: The SISPM1040-382-LRT can be management via console port. A DB-9 to RJ-45 cable is included in the package. Connect the cable to a serial port on the PC via the RS-232 DB-9 female connector and the other end (RJ-45 connector) to the switch console port.

Command Line Interface (CLI): In addition to Web-base management, the SISPM1040-382-LRT also supports CLI management. Before configuring by RS-232 serial console, use an RJ45 to DB9-F cable to connect the switch’s RS-232 Console port to your PCs’ COM port. You can use HyperTerminal, PuTTY, Tera Term, Telnet, or similar program. The main CLI command line controls are: `?`: List, `<TAB>`: Complete, `<ctrl+z>`: Up level, `<ctrl+q>`: Logout



The main CLI commands include Enter Privileged EXEC mode (enable), Logout command line shell (logout), Ping function (ping), Logout command line shell (quit), and Show (show).

Config mode commands let you configure 8021x, admin, aggregator, auto-sfp, check-concurrence, defaults, dhcpserver, end, events, exit, fault-relay, igmp, interface, ip, lldp, mac-address-table, mstp, multi-ring, multicast-filtering, multiple-ring, no, ptp, qos, reload, rings, rstp, security, sfp-monitor, smtp, snmp, snpt, syslog, system details, tacacs+, and tftp.

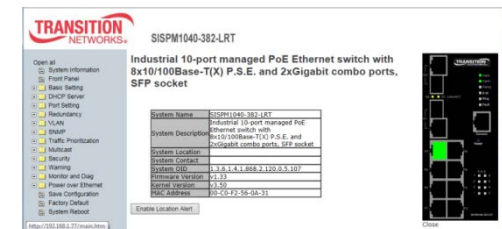
Web Management: The default values are IP Address: **192.168.1.77**, Subnet Mask: **255.255.255.0**, Default Gateway: **192.168.1.254**, User Name: **root**, Password: **root**.

System Login:

- 1. Launch a web browser such as Internet Explorer.
- 2. At the prompt http:// type the IP address of the switch and press “Enter”.
- 3. At the login screen (shown right), enter the current User name (**root**) and Password
- 4. Press “Enter”; the System Information page displays (below right).



(root).



The Web GUI lets you configure, monitor, test, and report the many available functions. The top-level Web GUI menu items are: System Information, Front Panel, Basic Setting, DHCP Server, Port Setting, Redundancy, VLAN, SNMP, Traffic Prioritization, Multicast, Security, Warnings, Monitor and Diagnostics, Power over Ethernet (PoE), Save Configuration, Factory Defaults, and System Reboot.

Related Information: For Transition Networks Drivers, Firmware, Manual, etc. go to the [Product Support](#) webpage (logon required). For Transition Networks Application Notes, Brochures, Data Sheets, Specifications, etc. go to the [Support Library](#) (no logon required).

Trademarks: All trademarks and registered trademarks are the property of their respective owners. **Copyright Notice/Restrictions:** Copyright © 2013-2017 Transition Networks. All rights reserved. No part of this work may be reproduced or used in any form or by any means (graphic, electronic or mechanical) without written permission from Transition Networks. The information contained herein is confidential property of Transition Networks, Inc. The use, copying, transfer or disclosure of such information is prohibited except by express written agreement with Transition Networks, Inc.

Transition Networks | 10900 Red Circle Drive | Minnetonka, MN 55343 USA | tel: +1.952.941.7600 | toll free: 1.800.526.9267 | fax: 952.941.2322 |

| sales@transition.com | techsupport@transition.com | customerservice@transition.com |