

## SDSTX3110-124-LRT-B Industrial Serial Device Servers

### Quick Start Guide

#### Introduction

The SDSTX3110-124-LRT-B is an innovative Industrial 4 secure serial port-to-Ethernet device server with one or four RS232/422/485 DB9 ports and two 10/100Base-TX RJ-45 ports. Standard features include TCP/IP interface and versatile operation modes: Virtual Com, Serial Tunnel, TCP Server, TCP Client, and UDP. The SDS-Manager Windows utility can configure multiple devices and set up Virtual COM mappings. See the full [SDSTX3110-12x-LRT-B User Guide](#) for important Safety Warnings, as well as product numbers, features, applications, dimensions, hardware installation, management software, specs, troubleshooting, and service, warranty, and tech support information.

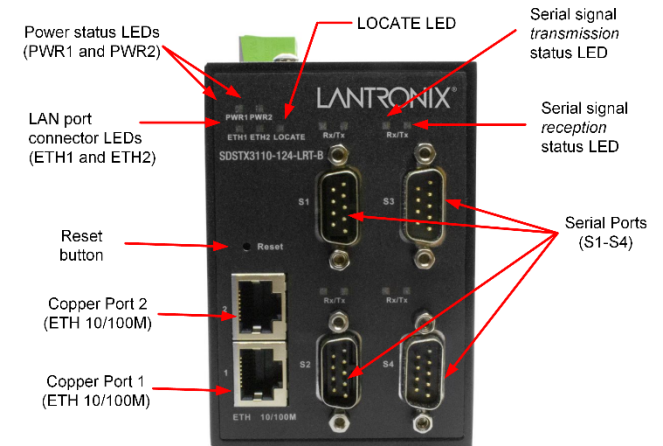


#### Hardware Overview

**Mounting Options:** Install the SDS on DIN rail, Panel or wall, or Rack mount. See the full SDSTX3110-12x-LRT-B User Guide for details.

**LEDs:** Power status LEDs, LAN port LEDs, Reset button, Ethernet port, Serial signal transmission & receipt status LEDs, Serial port, and LOCATE LED.

LED	Color	Status	Description
PWR1/PWR2	Green	On	Power is ON and function is normal.
PWR2/PWR2	Green	Off	Power is OFF.
ETH1/ETH2	Green	On	Port is connected and running at 10 or 100Mbps.
ETH1/ETH2	Green	Off	Port is not connected.
Rx	Red	On	Receiving serial data on the port below this LED.
Tx	Green	On	Transmitting serial data on the port below this LED.
LOCATE	Green	On	To locate a specific SDS among many devices, use SDS-Manager to light the SDS front panel LOCATE LED.



#### Connection

**10/100BASE-T(X) Pin Assignments:** The device has a standard Ethernet port. Based on link type, it uses CAT 3, 4, 5, or 5e UTP cables to connect to other network devices (PCs, servers, switches, routers, or hubs). On 10/100BASE-T(X) cables, pins 1 and 2 transmit data, and pins 3 and 6 receive data.

Cable	Type	Max. Length	Connector
10BASE-T	CAT 3, 4, 5 100-ohm	UTP 100 m (328 ft)	RJ-45
100BASE-TX	CAT 5 100-ohm UTP	UTP 100 m (328 ft)	RJ-45

**DB9 Console Port Wiring:** The serial port can be connected using a DB9 cable. The DB9 connector supports RS232 / RS422 / RS485 operation modes.

### Wiring

**Warning:** Perform the Connections before performing the Wiring. Do not disconnect modules or wires unless power is switched off or the area is known to be non-hazardous. The devices may only be connected to the supply voltage shown on the type plate. See the full *User Guide* for more information.

**Grounding:** Grounding and wire routing help limit the effects of noise due to electromagnetic interference (EMI). Run the ground connection from the ground pin on the power module to the grounding surface prior to connecting devices.

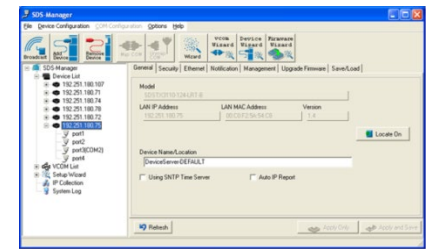
**Redundant Power Inputs:** The device has two sets of DC power inputs on the 4-pin terminal block on top of the device. **1.** Insert the Terminal Block connector into the keyed receptacle on the SDS. **2.** Insert the negative/positive wires into the V- and V+ terminals, respectively. **3.** Use a small flat-blade screwdriver to tighten the wire-clamp screws on the front of the terminal block connector.



### Configuration via SDS-Manager

The SDS-Manager supports device discovery, device configuration, group setup, group firmware update, and monitoring. It lets you easily install and configure network devices. The factory defaults are IP address: **192.168.1.77**, Subnet Mask: **255.255.255.0**, Default Gateway: **192.168.1.254**, User Name: **root**, and Password: **root**. To install SDS-Manager:

1. Select the folder for the SDS-Manager and click **Start** to run the setup program. The destination directory screen displays.
2. Click **Start** to install in the default directory (*C:\Program Files\SDS-Manager*) or select another location and click **Start**.
3. Check either the **Launch SDS-Manager Now** checkbox or the **Launch SDS-Manager Later** checkbox.
4. See the *SDS User Guide* for SDS Manager functions (Configuration, Monitor, Setup Wizard, IP Collection, and System Log).



### Configuration via Web Browser

The SDS can be managed via a built-in webserver running Internet Explorer v 5.0 or above or other web browsers such as Chrome. This allows simple, remote device monitoring and configuration, such as firmware upgrades. To manage your SDS via a Web browser:

1. Launch a Web browser.
2. Type the IP address of the device and press Enter.
3. At the login screen, type the default username **root** and the default password **root**.
4. Press Enter or click **OK**; the System Information page displays. The left side of the page provides links to configurable settings.
5. Click on a link to display its configuration page.



### Configuration via SSH Console

You can use an SSH tool such as PuTTY to access the SSH console of the device. The PuTTY settings are Serial line to connect to: **COM1**, Speed (baud): **9600**, Data bits: **8**, Stop bits: **1**, Parity: **None**, Flow control: **XON/XOFF**. Default User Name: **root**. Default Password: **root**.

**Lantronix:** 7535 Irvine Center Drive, Suite100, Irvine, CA 92618, USA. Toll Free: 800-526-8766. Phone: 949-453-3990. Fax: 949-453-3995. [Technical Support](#). [Sales Offices](#).

© 2022 Lantronix, Inc. All rights reserved. No part of the contents of this publication may be transmitted or reproduced in any form or by any means without the written permission of Lantronix. Lantronix is a registered trademark of Lantronix, Inc. in the United States and other countries. All other trademarks and trade names are the property of their respective holders.

Patented: <https://www.lantronix.com/legal/patents/>; additional patents pending.

