

# LANTRONIX®



## M/GE-ISW-SFP-01-PD

Hardened Mini PD Media Converter

User Guide

Part Number 33668  
Revision C October 2024

## Intellectual Property

© 2022-2024 Lantronix, Inc. All rights reserved. No part of the contents of this publication may be transmitted or reproduced in any form or by any means without the written permission of Lantronix.

*Lantronix* is a registered trademark of Lantronix, Inc. in the United States and other countries.

All other trademarks and trade names are the property of their respective holders.

Patented: <https://www.lantronix.com/legal/patents/>; additional patents pending.

## Warranty

For details on the Lantronix warranty policy, go to <http://www.lantronix.com/support/warranty>.

## Contacts

### Lantronix Corporate Headquarters

48 Discovery, Suite 250

Irvine, CA 92618, USA

Toll Free: 800-526-8766

Phone: 949-453-3990

Fax: 949-453-3995

### Technical Support

Online:

<https://www.lantronix.com/technical-support/>

### Sales Offices

For a current list of our domestic and international sales offices, go to [www.lantronix.com/about/contact](http://www.lantronix.com/about/contact).

## Disclaimer

All information contained herein is provided "AS IS." Lantronix undertakes no obligation to update the information in this publication. Lantronix does not make, and specifically disclaims, all warranties of any kind (express, implied or otherwise) regarding title, non-infringement, fitness, quality, accuracy, completeness, usefulness, suitability or performance of the information provided herein. Lantronix shall have no liability whatsoever to any user for any damages, losses and causes of action (whether in contract or in tort or otherwise) in connection with the user's access or usage of any of the information or content contained herein. The information and specifications contained in this document are subject to change without notice.

## Revision History

Rev	Date	Description
A	1/20/16	Initial release.
B	1/11/23	Initial Lantronix rebranding. Update artwork.
C	10/17/24	Add TAA and NDAA Compliant and fix typo.

## Contents

Introduction.....	4
Product Numbers .....	4
Features .....	4
Connectors and LEDs .....	4
Application Example.....	5
Package Contents .....	5
Installation .....	6
Electrostatic Discharge (ESD) Precautions .....	6
Installation Options .....	6
Connect Fiber Cables .....	8
Connect the Twisted-Pair Copper Cable .....	8
Operation.....	8
Status LEDs .....	8
Fiber Port Mode at Power Up .....	9
Product Features .....	9
Cable and Optic Specifications .....	11
Technical Specifications.....	13
PoE Standards and Power Classifications.....	14
Troubleshooting .....	15
Compliance Information .....	16
Declaration of Conformity .....	16

## Introduction

Lantronix' M/GE-ISW-SFP-01-PD is a PoE Powered Device (PD) media converter, with one 10/100/1000Base-T copper port and one 1000Base-X SFP fiber port, in Mini form factor. An addition to the Lantronix Mini product line, it has the same physical size metal enclosure as existing Minis. It supports Auto-Negotiation and Auto Cross, and uses a fixed configuration, with no DIP switches. It is powered through the RJ-45 copper port when connected to Power Sourcing Equipment (PSE) device, so no separate power connection is needed.

The copper port supports 10/100/1000Base-T and the fiber port supports an open SFP slot. It is an Extended Temperature Enterprise grade product supporting an operating temperature of -40° C to + 75° C. LEDs indicate the status of the copper and fiber port.

## Product Numbers

Product Number	Description
M/GE-ISW-SFP-01-PD	PoE Powered Device (PD) Hardened Mini Media Converter
SFPs	A wide operating temperature SFP is required. Lantronix has a wide range of MSA compliant SFPs and XFPs. See the <a href="#">Lantronix SFP webpage</a> for details.

## Features

- 1G Mini Converter with IEEE 802.3af PoE
- IEEE 802.3af PD power input from the RJ-45 TP interface
- Fully compliant with the IEEE 802.3af standard
- Class 1 – Very low power device, 3.84W
- Same form factor as all other Lantronix Mini devices
- Industrial temperature rating of -40 to +75 degrees C
- Fixed configuration, no DIP switch or jumper configuration needed
- Auto-Cross, Auto-Negotiation, and Active Link Pass-Through

## Connectors and LEDs

**Connectors:** One 10/100/1000Base TP RJ-45 (Copper) port;  
One 100/1000Base SFP (Fiber) port

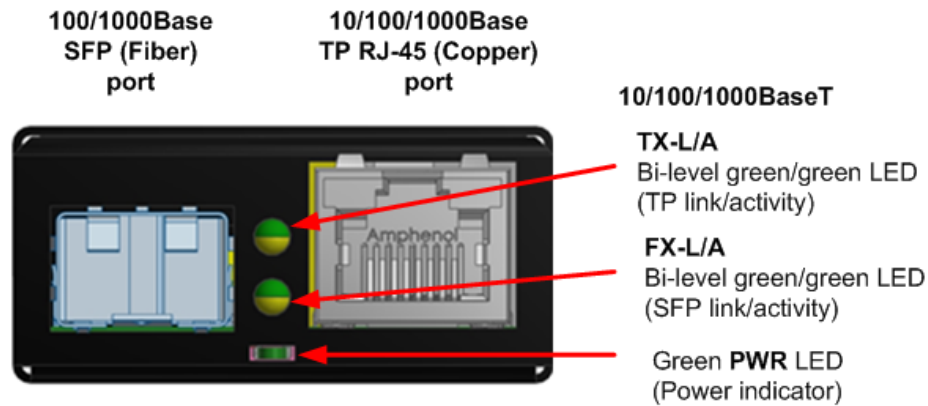
**LEDs:** Two Bi-level green/green LEDs:

- TP link/activity: Green – ON Link up, BLINK for activity
- SFP link/activity: Green – ON Link up, BLINK for activity

One SMT green LED:

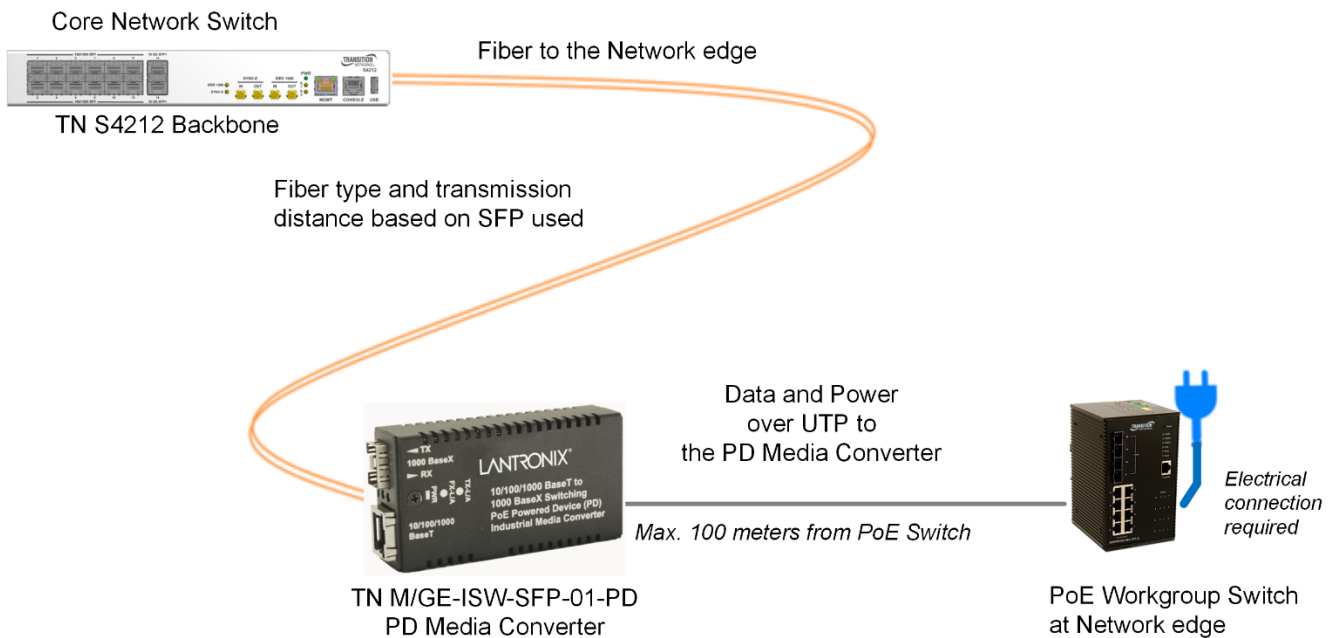
- Power indicator: Green – Powered

The M/GE-ISW-SFP-01-PD front panel is shown below.



## Application Example

The M/GE-ISW-SFP-01-PD is used to operate/maintain a network with data transmit rates to 1G using Lantronix products as shown below.



## Package Contents

Check that your package contains the following items. Contact your point of purchase if anything is missing or damaged.

- One M/GE-ISW-SFP-01-PD Hardened Mini PD Media Converter
- Industrial Velcro Mounting Strip
- One DIN Rail Clip and screw
- Documentation Postcard

Save the packing materials for possible future use.

## Installation

### *Electrostatic Discharge (ESD) Precautions*

Always observe the following ESD precautions when installing or handling the M/GE-ISW-SFP-01-PD:

- Do not remove the converter from its protective packaging until you are ready to install M/GE-ISW-SFP-01-PD media converter.
- Wear an ESD wrist grounding strap before handling the M/GE-ISW-SFP-01-PD media converter or any of these component. If you do not have a wrist strap, maintain grounded contact with the unit throughout any procedure requiring ESD protection.

### *Installation Options*

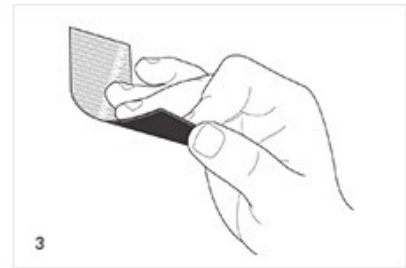
You can install your media converter using the Industrial Velcro Mounting or the DIN Rail Clips as described in the following sections.

#### **Installing Industrial Velcro**

The Industrial Velcrostrip features a molded plastic hook and a heavy-duty, water-resistant adhesive for superior holding power on smooth surfaces, including plastic. It is designed for indoor and outdoor use.

To install the Industrial Velcro onto the media converter:

1. Clean and dry surface before application.
2. Peel tape from fastener and press firmly into place.
3. Adhesive reaches maximum strength after 24 hours.



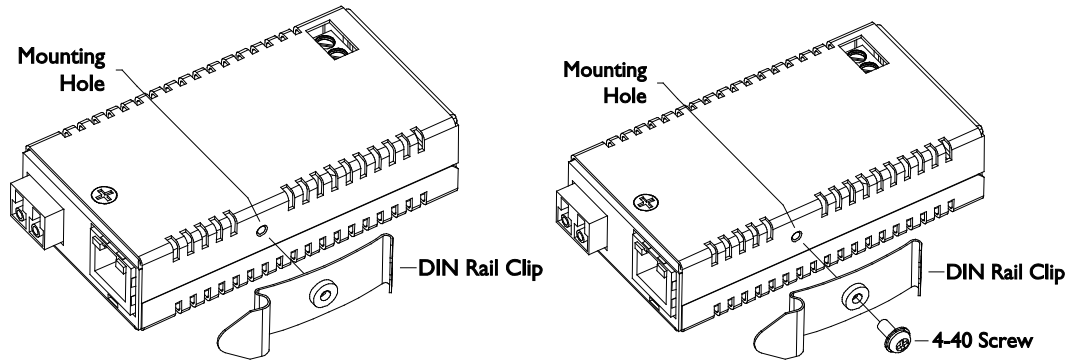
**Note:** Recommended for temperatures between 0°F to 150°F. Not recommended for fabrics, dashboards, flexible vinyl or underwater use. Continued exposure to full sunlight can damage fastener. May not adhere well to certain types of brick; testing is recommended.

The VELCRO® Brand. © 2015 Velcro Industries B.V.

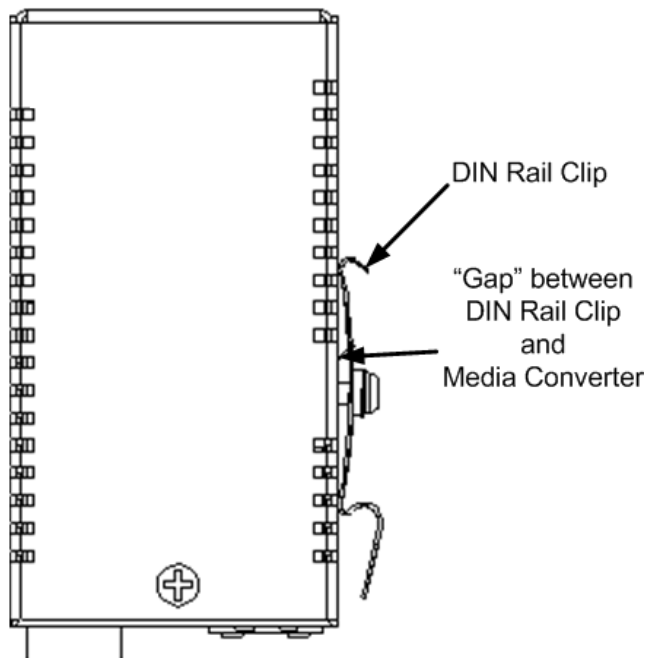
## Installing DIN Rail Clip

A DIN Rail Clip and a 4-40 Screw are included. To install the DIN Rail onto the media converter:

1. Position the DIN Rail Clip to the side of the media converter as shown below.



2. Position the 4-40 screw to attach the DIN rail to the media converter as shown above right.



3. Insert and tighten the 4-40 Screw until the DIN Rail Clip appears as shown above. When the DIN Rail Clip is attached, there should be a "gap" between the Clip and the Media Converter as shown above.

## Connect Fiber Cables

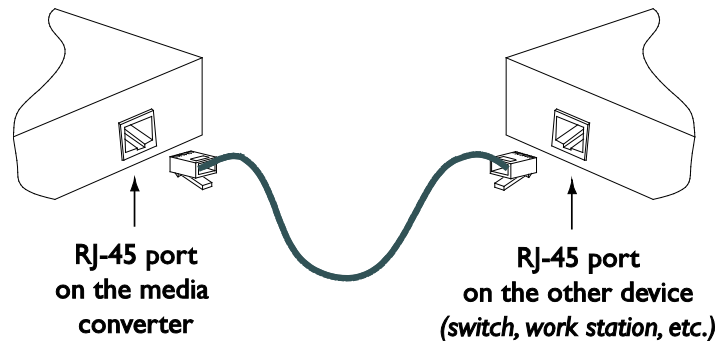
On the fiber side, full duplex is always on, therefore, the 512-Bit Rule does not apply. The fiber cable specs are constrained by the type of SFP used.

## Connect the Twisted-Pair Copper Cable

The AutoCross feature allows either MDI (*straight-through*) or MDI-X (*crossover*) cable connections to be configured automatically, according to network conditions.

Perform these steps:

1. Locate a 1GbE cable with RJ-45 connectors installed at both ends.
2. Connect the RJ-45 connector at one end of the cable to the RJ-45 port on the M/GE-ISW-SFP-01-PD media converter.
3. Connect the RJ-45 connector at the other end of the cable to the RJ-45 port on the other device (*switch, workstation, etc.*).



## Operation

### Status LEDs

Use the status LEDs to monitor M/GE-ISW-SFP-01-PD operation in the network.

**PWR:** Power status:

- On = power is on
- Off = power is off

**Fiber Link/Act:** Fiber port link and activity status:

- Green On = 1000BASE-X or 100Base-FX fiber link OK
- Green Flash = 1000BASE-X or 100Base-FX fiber link OK and activity
- Off = Fiber link down

**Copper Link/Act:** Copper port link and activity status:

- Green On = 10/100/1000BASE-T copper link OK
- Green Flash = 10/100/1000BASE-T copper link OK and activity
- Off = Copper link fail



## Fiber Port Mode at Power Up

The fiber port mode is defined by the type of SFP module in the SFP slot at power up:

SFP module in slot at power up	Fiber port mode after power up
No SFP module	1000BASE-X
1000BASE-X SFP module	1000BASE-X
100BASE-FX SFP module	100BASE-FX

## Product Features

The features - Congestion Reduction, Auto-Negotiation, AutoCross™, Active Link Pass-Through, Automatic link Restoration, Distance Extension, Rate Conversion, and Far End Fault are described below.

### Congestion Reduction

The M/GE-ISW-SFP-01-PD media converters do not forward collision signals or error packets from one collision domain to another, resulting in improvements in baseline network performance. In addition, the media converter filters packets destined for local devices, which reduces network congestion.

### Auto-Negotiation

The Auto-Negotiation feature is ON permanently for the M/GE-ISW-SFP-01-PD media converters. Auto-Negotiation allows the media converter to configure itself automatically to achieve the best possible mode of operation over a link. It broadcasts speed and duplex capabilities (full or half) to the other device and negotiates the best mode of operation. Auto-Negotiation allows quick and easy installation because the optimal link is established automatically. In a scenario where an auto-negotiation device is linked to a non-negotiating device, the negotiating device via parallel detection recognizes the speed of that second device then establishes the best operating speed at half duplex.

### AutoCross™

The AutoCross feature allows using either straight-through (MDI) or crossover (MDI-X) copper cables when connecting to devices. AutoCross determines the connection characteristics and automatically configures the device to link up, regardless of the copper cable configuration, MDI or MDI-X.

### Active Link Pass-Through (ALPT)

**Link Pass-Through** is a troubleshooting feature that allows the media converter to monitor both the fiber and copper RX ports for loss of signal. With the loss of RX signal on one media port, the converter will automatically disable the TX signal of the other media port, thus “passing through” the link loss.

- End device automatically notified of link loss
- Prevents loss of valuable data unknowingly transmitted over invalid link

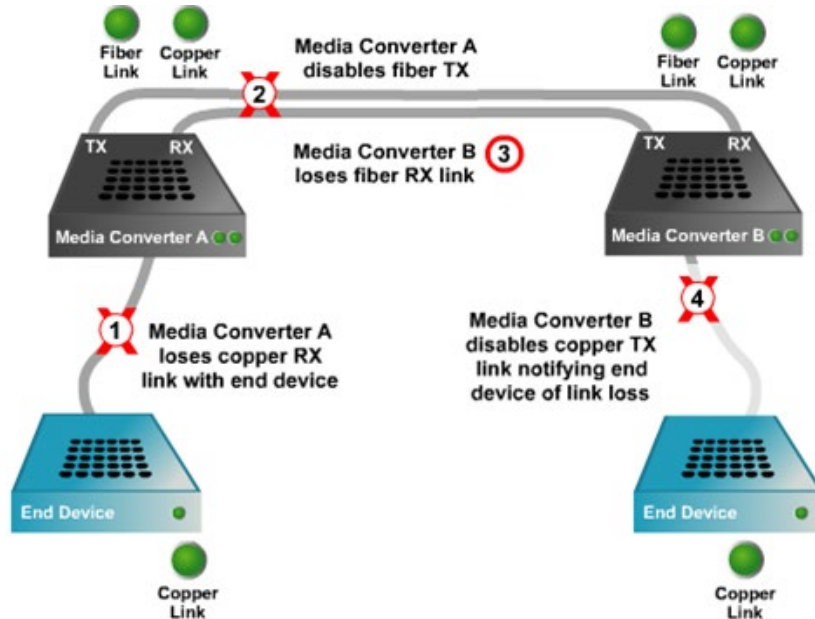
**Active** LPT is a form of LPT that requires the links to become Active before LPT becomes Active.

With Active LPT there are 2 states: Diagnostic and Active.

On power-up, the media converter enters the Diagnostic state. In the Diagnostic state, the link for each of the media converter’s ports can come up independently of each other, just like when regular LPT is disabled. The Diagnostic state is helpful during first power up, before all links of a circuit are connected, as it allows the installer to see each link turn on as the cables are plugged in. It’s also helpful for finding the location of a fault, if one exists.

The media converter remains in the Diagnostic state until the following condition is met: the link status for both of the media converter's ports is up, simultaneously.

After that condition is met, ALPT enters the Active state. It remains in the Active state until the converter is powered down. In the Active state, Active LPT works as shown below (the same as when regular LPT is enabled).



### Automatic Link Restoration

The media converter will automatically re-establish the link when connected to switches if the link is lost.

### Distance Extension

The M/GE-ISW-SFP-01-PD media converters can segment one Ethernet and/or Fast Ethernet and one fiber Fast Ethernet collision domain:

- In a half-duplex Ethernet or Fast Ethernet environment, the M/GE-ISW-SFP-01-PD media converters extend network distances by segmenting collision domains so that the 512-Bit Rule applies separately to each collision domain.
- In a full-duplex Ethernet or Fast Ethernet environment, the M/GE-ISW-SFP-01-PD media converters extend network distances to the physical cable limitations imposed by the selected twisted-pair copper fiber cables.

### Rate Conversion

The M/GE-ISW-SFP-01-PD media converters allow connection of 10Mbps terminal devices on a 10Base-T legacy Ethernet copper network to terminal devices on a 100Mbps Fast Ethernet or 1000Mbps Gigabit Ethernet copper network and/or terminal devices on a 100Mbps Fast Ethernet or 1000Mbps Gigabit Ethernet fiber network.

## Cable and Optic Specifications

The fiber optic cable physical characteristics must meet or exceed IEEE 802.3ae specification.

### Fiber Cable

Bit Error Rate:	<10 <sup>-9</sup>
Single mode fiber ( <i>recommended</i> ):	9 μm
Multimode fiber ( <i>recommended</i> ):	62.5/125 μm
Multimode fiber ( <i>optional</i> ):	100/140, 85/140, 50/125 μm

### Optics

The optics specs depend on the SFP used. See the related SFP documentation for details.

### Copper Cable

#### Category 3: (Minimum requirement for 10 Mbps operation)

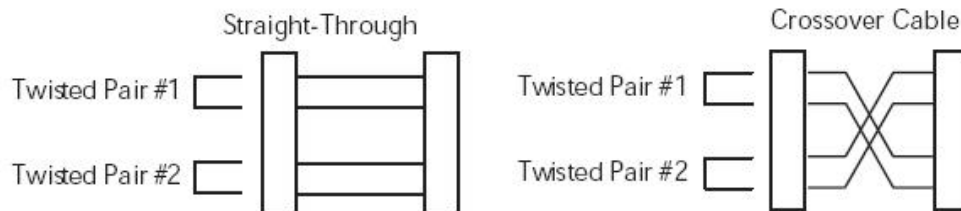
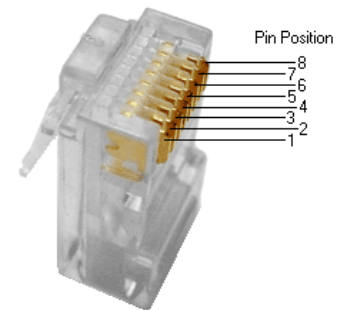
Gauge	24 to 22 AWG
Attenuation	11.5 dB/100m @ 5-10 MHz
Maximum Cable Distance	100 meters

#### Category 5: (Minimum requirement for 100 Mbps operation)

Gauge	24 to 22 AWG
Attenuation	22.0 dB /100m @ 100 MHz
Maximum Cable Distance	100 meters

#### Category 6: (Minimum requirement for 1 Gbps operation)

- Straight-through or crossover twisted-pair cable may be used.
- Shielded (STP) or unshielded (UTP) twisted-pair cable may be used.
- Pins 1&2 and 3&6 are the two active pairs in an Ethernet network.
- Use only dedicated wire pairs for the active pins:  
(*e.g., blue/white & white/blue, orange/white & white/orange, etc.*)
- Do not use flat or silver satin wire.



**Category 5e:** The category 5e specification improves on the category 5 specification by tightening some crosstalk specifications and introducing new crosstalk specifications that were not present in the original category 5 specification. The bandwidth of category 5 and 5e is the same (100 MHz) and the physical cable construction is the same, and the reality is that most Cat5 cable meets Cat5e specifications, though it is not tested or certified as such. The cable standard provides performance of up to 100 MHz and is suitable for 10BASE-T, 100BASE-TX (Fast Ethernet), and 1000BASE-T (Gigabit Ethernet).

10BASE-T and 100BASE-TX Ethernet connections require two wire pairs.

1000BASE-T Ethernet connections require four wire pairs. Cat 5e is the minimum for 1000 Mbps.

**Category 6** cable, commonly referred to as Cat 6, is a standardized cable for Gigabit Ethernet and other network physical layers that is backward compatible with the Category 5/5e and Category 3 cable standards. Compared to Cat 5 and Cat 5e, Cat 6 provides more stringent specifications for crosstalk and system noise. The Cat 6 cable standard provides performance of up to 250 MHz and is suitable for 10BASE-T, 100BASE-TX (Fast Ethernet), 1000BASE-T/1000BASE-TX (Gigabit Ethernet) and 10GBASE-T (10-Gigabit Ethernet). Category 6 cable has a reduced maximum length when used for 10GBASE-T.

Like most of the earlier twisted-pair cables, Category 6 cable contains four twisted wire pairs. Attenuation, Near End crosstalk (NEXT), and PSNEXT (Power Sum NEXT) in Cat 6 cable and connectors are all much lower than Cat 5 or Cat 5e, which uses 24 AWG wire. The increase in performance with Cat 6 comes mainly from increased (22 AWG) wire size. Because the conductor sizes are generally the same, Cat 6 jacks may also be used with Cat 5e cable.

Category 6 cable can be identified by the printing on the side of the cable sheath. Cat 6 patch cables are normally terminated in 8P8C modular connectors. If Cat 6 rated patch cables, jacks, and connectors are not used with Cat 6 wiring, overall performance is degraded to that of the cable or connector.

Connectors use either T568A or T568B pin assignments; although performance is comparable provided both ends of a cable are the same, T568B is a deprecated standard in the US and no longer supported by TIA.

**Category 6a** cable, or Augmented Category 6, is characterized to 500 MHz and has improved alien crosstalk characteristics, allowing 10GBASE-T to be run for the same distance as previous protocols.

The latest standard from the TIA for enhanced performance standards for twisted pair cable systems was defined in February 2008 in ANSI/TIA/EIA-568-B.2-10. Category 6a is defined at frequencies up to 500 MHz - twice that of Cat. 6. Category 6a performs at improved specifications, in particular in the area of alien crosstalk, as compared to Cat 6 UTP (unshielded twisted pair), which exhibited high alien noise in high frequencies.

The global cabling standard ISO/IEC 11801 has been extended by the addition of amendment 2, which defines new specifications for Cat 6a components and Class EA permanent links. These new global Cat 6a/Class EA specifications require a new generation of connecting hardware, which offer superior performance compared to existing products based on the American TIA standard.

Note the performance difference between ISO/IEC and EIA/TIA component specifications for the NEXT transmission parameter. At a frequency of 500 MHz, an ISO/IEC Cat 6a connector performs 3 dB better than a Cat 6a connector that conforms to the EIA/TIA specification. The 3 dB represents a 100% increase of near-end crosstalk noise reduction when measured in absolute magnitudes.

### Maximum Length

When used for 10/100/1000BASE-T, the maximum allowed length of a Cat 6 cable is 100 meters or 328 feet. This consists of 90 meters (300 ft) of solid "horizontal" cabling between the patch panel and the wall jack, plus 10 meters (33 ft) of stranded patch cable between each jack and the attached device. Since stranded cable has higher attenuation than solid cable, exceeding 10 meters of patch cabling will reduce the permissible length of horizontal cable.

When used for 10GBASE-T, Cat 6 cable's maximum length is 55 meters (180 ft) in a favorable alien crosstalk environment, but only 37 meters (121 ft) in a hostile alien crosstalk environment, such as when many cables are bundled together. However, because the effects of alien crosstalk environments on cables are difficult to determine prior to installation, it is highly recommended that all Cat 6 cables being used for 10GBASE-T are electrically tested once installed. With its improved specifications, Cat6 A does not have this limitation and can run 10GBASE-T at 100 meters (330 ft) without electronic testing.

### Installation Notes

Category 6 and 6a cable must be properly installed and terminated to meet specifications. The cable must not be kinked or bent too tightly (the bend radius should be at least four times the outer diameter of the cable). The wire pairs must not be untwisted and the outer jacket must not be stripped back more than 1/2 inch (1.27 cm). All shielded cables must be grounded for safety and effectiveness and a continuous shield connection maintained from end to end. Ground loops develop when there is more than one ground connection and the difference in common mode voltage potential at these ground connections introduces noise into the cabling. Note that 23 or 24 AWG wire is allowed if the ANSI/TIA-568-B.2-1 performance specifications are met. The figure below shows the pins on plug face; note that the socket is the reverse of the plug pinout shown below. For more information, see the TIA web site or the IEEE web site.

## Troubleshooting Cat 6 & Cat 6a Structured Copper Cabling Systems

If a Category 6 cabling system does not meet the electrical requirements for supporting 10GBASE-T applications, see the TSB-155 for guidelines to mitigate the alien crosstalk between the target pair and the disturbing pairs of Category 6 channels and permanent links. Annex B of TSB-155 outlines the following mitigation actions most appropriate for individual situations:

- Use Category 6 shielded or Category 6a patch cords;
- Replace Category 6 connectors with Category 6a connectors;
- Use non-adjacent patch panel positions;
- Separate equipment cords and patch cords;
- Unbundle or more loosely bundle the horizontal cabling; and
- Reconfigure the cross-connect as an interconnect.

## Technical Specifications

The Lantronix M/GE-ISW-SFP-01-PD was designed to meet these specifications.

Standards Compliance	IEEE 802.3-2012; TAA Compliant and NDAA Compliant
Regulatory Compliance for Emission	EN55022 Class A
Regulatory Compliance for Immunity	EN55024
Safety Compliance	NA
Power Consumption	1.8W (47mA @ 37V PoE input)
Power Source	IEEE 802.3af supplied through TP RJ-45
Size (width x depth x height)	3.3 " x 1.8 " x 0.8 " (83.82 x 45.72 x 20.32 mm)
Weight	0.25 lb. (0.11 Kg.)
Operating Temperature	-40 to +75 deg. C
Storage Temperature	-40 to + 85 deg. C
Altitude	0-10,000 feet
Operating Humidity	5% to 95% (non-condensing)
MTBF*	Greater than 225,000 MIL-HDBK-217F Hours. Greater than 618,750 Bellcore Hours. Prediction Method: MIL-HDBK-217F Parts Count. Environment: GB, Ground Benign. Temperature 25°C.
Warranty	Lifetime

**CAUTION:** Copper based media ports, e.g., Twisted Pair (TP) Ethernet, USB, RS232, RS422, RS485, DS1, DS3, Video Coax, etc., are intended to be connected to intrabuilding (inside plant) link segments that are not subject to lightning transients or power faults. Copper-based media ports are NOT to be connected to interbuilding (outside plant) link segments that are subject to lightning transients or power faults. Failure to observe this caution could result in damage to equipment.

**WARNING:** Visible and invisible laser radiation when open. Do not stare into the beam or view directly with optical instruments. Failure to observe this warning could result in an eye injury or blindness.

**WARNING:** Use of controls, adjustments, or the performance of procedures other than those specified herein could result in hazardous radiation exposure.

The information in this manual is subject to change.

## PoE Standards and Power Classifications

The original IEEE 802.3af-2003 **PoE** standard provides up to 15.4 W of DC power (minimum 44 V DC and 350 mA) to each device.

The updated IEEE 802.3at-2009 PoE standard, also known as **PoE+** or PoE plus, provides up to 25.5 W of power. The 2009 standard prohibits a powered device from using all four pairs for power.

Both of these amendments have since been incorporated into the IEEE 802.3-2012 publication.

### Standard PoE Parameters Comparison (Wikipedia)

Property	802.3af (802.3at Type 1)	802.3at Type 2
Power available at PD	12.95 W	25.50 W
Maximum power delivered by PSE	15.40 W	30.0 W
Voltage range (at PSE)	44.0–57.0 V	50.0–57.0 V
Voltage range (at PD)	37.0–57.0 V	42.5–57.0 V
Maximum current	350 mA	600 mA per mode
Maximum cable resistance	20 $\Omega$ (Category 3)	12.5 $\Omega$ (Category 5)
Power management	Three power class levels negotiated at initial connection	Four power class levels negotiated at initial connection or 0.1 W steps negotiated continuously
Derating of maximum cable ambient operating temperature	None	5°C with one mode (two pairs) active
Supported cabling	Category 3 and Category 5 <a href="#">[1]</a>	Category 5
Supported modes	Mode A (endspan), Mode B (midspan)	Mode A, Mode B

**Note 1:** More stringent cable specification allows assumption of more current carrying capacity and lower resistance (20.0 Ohms for Category 3 versus 12.5 Ohms for Category 5).

## Troubleshooting

If the media converter fails, isolate and correct the fault by determining the answers to the following questions and then taking the indicated action:

1. Is the **PWR** (power on) LED lit?  
NO
  - Is the RJ-45 wired to an IEEE 802.3af or 802.3at PSE product powered and enabled?
  - Contact Tech Support.YES
  - Proceed to step 2.
2. Is the **TX-L/A** (copper link) LED lit?  
NO
  - Check the twisted-pair copper cables for proper connection. See [Connect the Twisted-Pair Copper Cable](#) on page 8.
  - Contact Tech Support.YES
  - Proceed to step 3.
3. Is the **FX-L/A** (fiber link) LED lit?  
NO
  - Check the fiber cables for proper connection. See [Connect Fiber Cables](#) on page 8.
  - Verify that the fiber cables on the media converter are properly connected to the ports on the other device.
  - Verify the correct SFP is used; reseal the SFP and re-power the device to ensure the SFP speed was registered. See [“Fiber Port Mode at Power Up”](#) on page 9.
  - Contact Tech Support.YES
  - Proceed to step 4.
4. Is the TX (copper receive) LED flashing?  
NO
  - If there is activity on the copper port, disconnect and reconnect the copper cable to reinitialize.
  - Restart the workstation to restart the initialization process.
  - Contact Tech Support.YES
  - Contact Tech Support.
5. Check for a duplex mode / auto-negotiation mode mismatch.
6. Make sure the Ethernet link established is not too long for effective PoE delivery.
7. Try the Ethernet switch cable diagnostics feature.
8. Check cable type (Cat 5/5e/6; single- or multi-strand), mechanical connectors, electrical noise in cable.
9. Check if nonpowered Ethernet devices can establish an Ethernet link on a port.
10. Verify that PoE and Non-PoE devices do not work on this port but work on other ports.
11. Check if the problem happens at a specific time of day or night.
12. If the problem started after the PD was working, check what changed (e.g., any hardware or software changes).

## Compliance Information

### Declaration of Conformity

Manufacturer's Name: Lantronix, Inc.

Manufacturer's Address: 48 Discovery, Suite 250, Irvine, California 92618 USA

Declares that the product(s):

Industrial Gigabit Stand-Alone Media Converters

Model #s: M/GE-ISW-SFP-01-PD

Conforms to the following Product Regulations:

FCC 47 CFR Part 15 :2012 Class A

ANSI C63.4:2009; EMC-Directive 2004/108/EC; EN 55022:2010 Class A

EN 61000-3-2:2006/A1:2009/A2:2009; EN61000-3-3:2008; EN55024:2010; IEC61000-4-2:2008; IEC61000-4-3:2006/A2:2010

IEC61000-4-4:2004, IEC61000-4-5:2005, IEC61000-4-6:2008, IEC61000-4-8:2009, IEC61000-4-11:2004

With the technical construction on file at the above address, this product carries the CE Mark I, the undersigned, hereby declare that the equipment specified above conforms to the above Directive(s) and Standard(s).

Place: Irvine, California

Date: April 27, 2022

Signature: *Fathi Hakam*

Full Name: Fathi Hakam

Position: Vice President of Engineering

### FCC regulations

This equipment has been tested and found to comply with the limits for a Class A digital device, pursuant to Part 15 of the FCC rules. These limits are designed to provide reasonable protection against harmful interference when the equipment is operated in a commercial environment. This equipment generates, uses, and can radiate radio frequency energy and, if not installed and used in accordance with the instruction manual, may cause harmful interference to radio communications. Operation of this equipment in a residential area is likely to cause harmful interference, in which case the user will be required to correct the interference at the user's own expense.

### Canadian regulations

This digital apparatus does not exceed the Class A limits for radio noise for digital apparatus set out on the radio interference regulations of the Canadian Department of Communications.

Le présent appareil numérique n'émet pas de bruits radioélectriques dépassant les limites applicables aux appareils numériques de la Class A prescrites dans le Règlement sur le brouillage radioélectrique édicté par le ministère des Communications du Canada.



## European regulations

### Warning

This is a Class A product. In a domestic environment this product may cause radio interference in which case the user may be required to take adequate measures.

### Achtung !

Dieses ist ein Gerät der Funkstörgrenzwertklasse A. In Wohnbereichen können bei Betrieb dieses Gerätes Rundfunkstörungen auftreten. In diesem Fall ist der Benutzer für Gegenmaßnahmen verantwortlich.

### Attention !

Ceci est un produit de Classe A. Dans un environnement domestique, ce produit risque de créer des interférences radioélectriques, il appartiendra alors à l'utilisateur de prendre les mesures spécifiques appropriées.



In accordance with European Union Directive 2002/96/EC of the European Parliament and of the Council of 27 January 2003, Lantronix will accept post usage returns of this product for proper disposal. The contact information for this activity can be found in the 'Contact Us' portion of this document.



CAUTION: RJ connectors are NOT INTENDED FOR CONNECTION TO THE PUBLIC TELEPHONE NETWORK. Failure to observe this caution could result in damage to the public telephone network.

Der Anschluss dieses Gerätes an ein öffentliches Telekommunikationsnetz in den EGMitgliedstaaten verstösst gegen die jeweiligen einzelstaatlichen Gesetze zur Anwendung der Richtlinie 91/263/EWG zur Angleichung der Rechtsvorschriften der Mitgliedstaaten über Telekommunikationsendeinrichtungen einschliesslich der gegenseitigen Anerkennung ihrer Konformität.

**Trade Agreement Act (TAA) Compliant Products:** <https://www.lantronix.com/legal/rohs/taa-compliant-products/>

**NDAA, RoHS, REACH and WEEE Compliance:** <https://www.lantronix.com/legal/rohs/>

**Lantronix Corporate Headquarters**

48 Discovery, Suite 250  
Irvine, CA 92618, USA  
Toll Free: 800-526-8766  
Phone: 949-453-3990  
Fax: 949-453-3995

**Technical Support**

Online: <https://www.lantronix.com/technical-support/>

**Sales Offices**

For a current list of our domestic and international sales offices, go to the Lantronix web site at [www.lantronix.com/about/contact](http://www.lantronix.com/about/contact).