

# GUI Login Guide

## Application Note 307 – GUI Login Procedure

### S323x Log-In via Web GUI

Application note:

This application note describes how to log-into the S323x locally using the built-in system Web GUI Interface. Refer to Applications Note #305 for USB driver and CLI log-in instructions.

#### **Default IP configuration**

The S323x comes from the factory with the following default IP configuration.

- IP address: 192.168.0.10
- Subnet Mask: 255.255.255.0
- Gateway: 192.168.1.2

Step 1: Log into the S323x via the serial CLI USB port and ensure the S323x switch mode is set to **local**.

At the command prompt:

Type: **show switch mode**

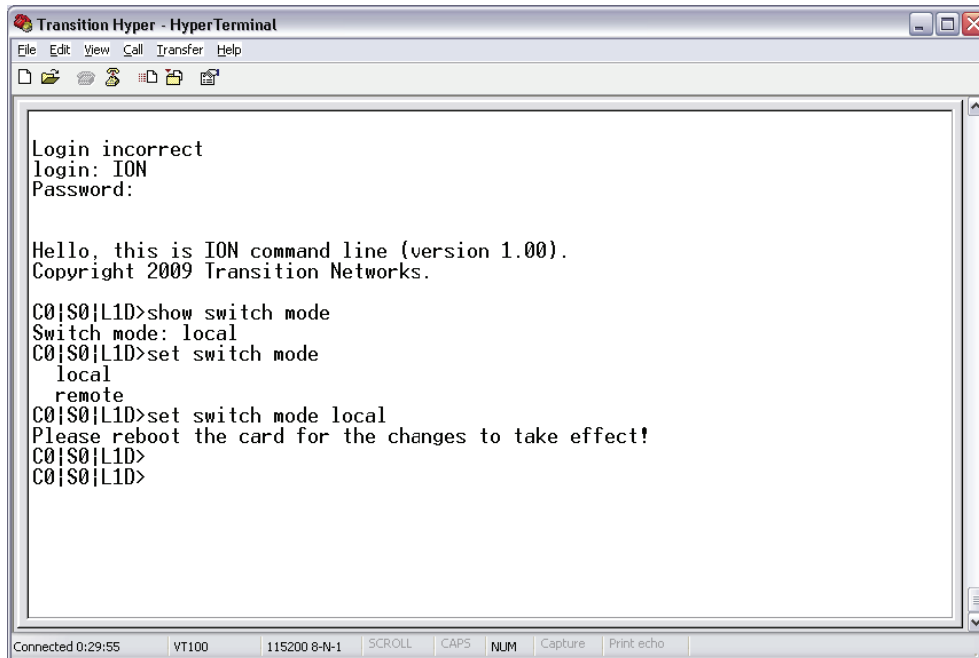


Transition Networks, Inc.  
10900 Red Circle Drive  
Minnetonka, MN 55343  
USA

Transition Networks Inc. offers networking connectivity solutions that make networks perform better, faster and more reliably while helping companies leverage their existing networking infrastructure.

# GUI Login Guide

## Application Note 307 – GUI Login Procedure



```
Transition Hyper - HyperTerminal
File Edit View Call Transfer Help
Login incorrect
login: ION
Password:

Hello, this is ION command line (version 1.00).
Copyright 2009 Transition Networks.

C0|S0|L1D>show switch mode
Switch mode: local
C0|S0|L1D>set switch mode
local
remote
C0|S0|L1D>set switch mode local
Please reboot the card for the changes to take effect!
C0|S0|L1D>
C0|S0|L1D>
```

Connected 0:29:55 | VT100 | 115200 8-N-1 | SCROLL | CAPS | NUM | Capture | Print echo

To change management mode:

Type: **set switch mode local**

Reboot the S323x to make the change effective.

Type: **Reboot**, then enter



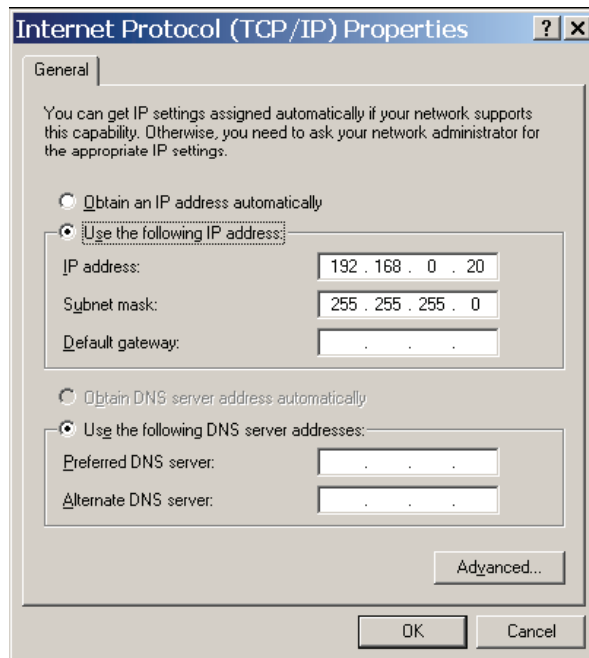
Transition Networks, Inc.  
10900 Red Circle Drive  
Minnetonka, MN 55343  
USA

Transition Networks Inc. offers networking connectivity solutions that make networks perform better, faster and more reliably while helping companies leverage their existing networking infrastructure.

# GUI Login Guide

## Application Note 307 – GUI Login Procedure

Step 2: Assign an IP address to the PC local Ethernet adapter  
Using the same subnet address as the S323x (Example: 192.168.0.20)



Step 3: Open a web browser and enter 192.168.0.10 in the URL address field,  
Enter



Transition Networks, Inc.  
10900 Red Circle Drive  
Minnetonka, MN 55343  
USA

Transition Networks Inc. offers networking connectivity solutions that make networks perform better, faster and more reliably while helping companies leverage their existing networking infrastructure.

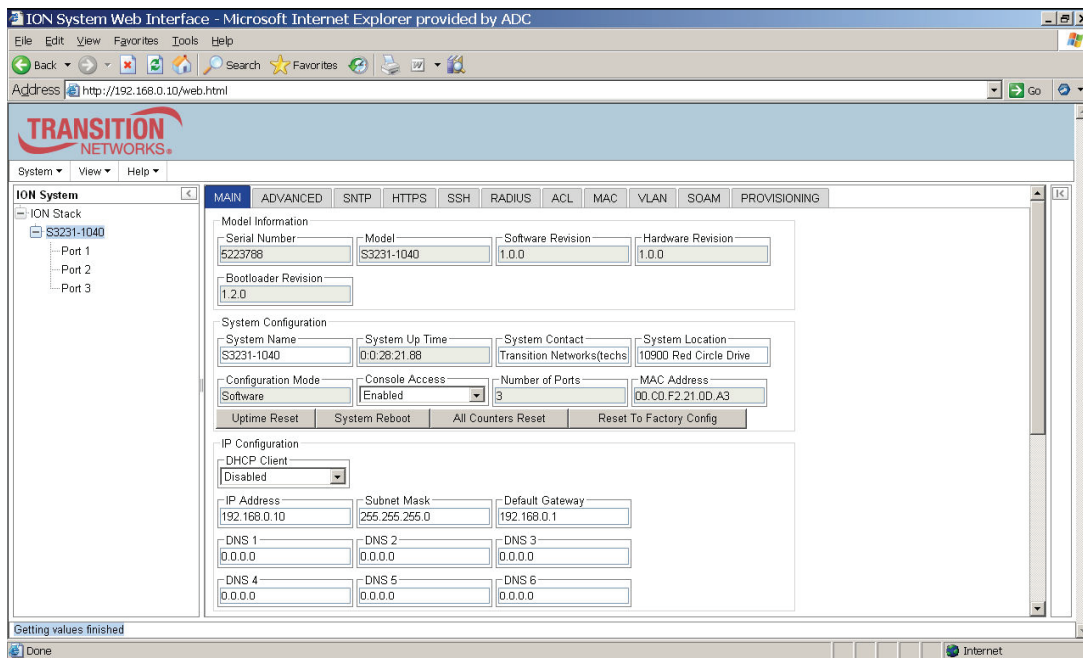
# GUI Login Guide

## Application Note 307 – GUI Login Procedure



Enter password private

Step 4: Select ION Stack, then S323x to view main system menu



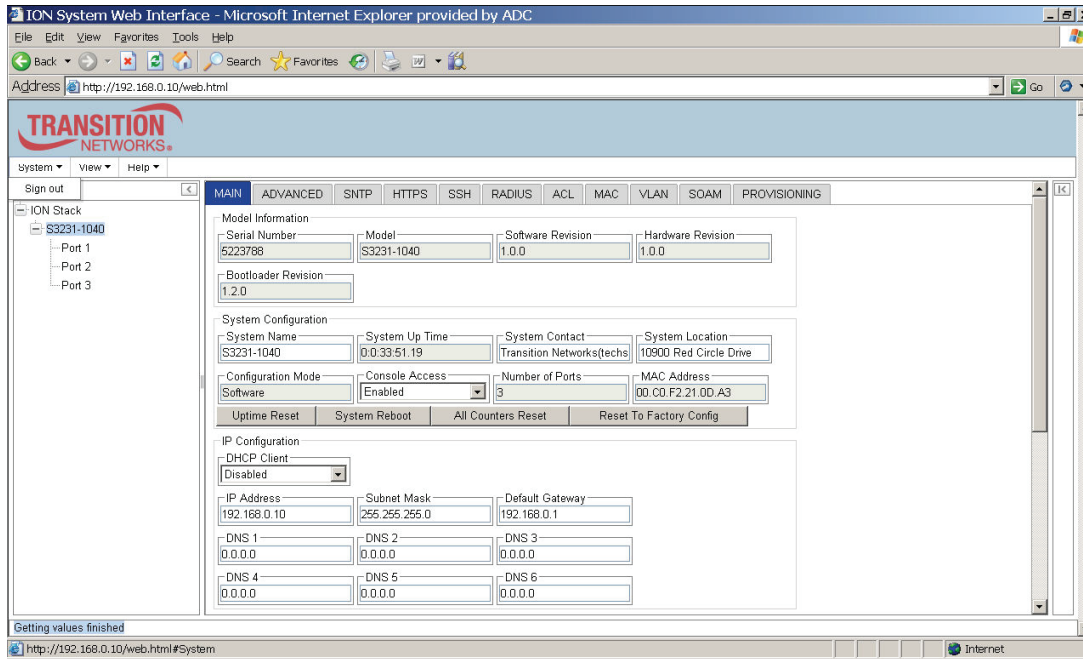
Transition Networks, Inc.  
10900 Red Circle Drive  
Minnetonka, MN 55343  
USA

Transition Networks Inc. offers networking connectivity solutions that make networks perform better, faster and more reliably while helping companies leverage their existing networking infrastructure.

# GUI Login Guide

## Application Note 307 – GUI Login Procedure

To logout of system, select System tab, then sign-out



Transition Networks, Inc.  
10900 Red Circle Drive  
Minnetonka, MN 55343  
USA

Transition Networks Inc. offers networking connectivity solutions that make networks perform better, faster and more reliably while helping companies leverage their existing networking infrastructure.