

CLI Initial Setup

Application Note 305 – CLI Initial Setup Procedure

Initial CLI Setup Procedure for the S323x

This application note describes how to install the USB drivers for the S323x NID for basic console command line access (CLI) via the serial USB port and, initial set-up to include:

- o Logging in using default username and password
- o Setting local and remote management options
- o Obtaining default IP configuration
 - Setting/enabling IP Management State
 - Setting new IP address and subnet mask
- o Setting new DHCP address
 - Enabling DHCP
- o Obtaining default VLAN Management ID
 - Setting new VLAN Management ID
- o Resetting to Systems Factory Defaults

Procedure

1. Power on the S323x by introducing power source provided

2. Installing USB driver

The driver installation instructions are for Windows XP. Installing the drivers using Windows 2000 is similar, but not necessarily identical to the XP procedure.

Note: The following USB drivers are available on the CD provided with the S323x or can be downloaded at <http://www.transition.com> Windows 7, Win7x64, Windows 2000, Win Server 2003, Win 2002, Win ME/98, Windows CE 4.2 -5.2, 6.0 operating system.

- o Extract the driver and place it in an accessible folder on the local drive.
- o Plug the S323x NID into the PC USB port to bring up the .found new hardware. wizard dialog box.



Transition Networks, Inc.
10900 Red Circle Drive
Minnetonka, MN 55343
USA

Transition Networks Inc. offers networking connectivity solutions that make networks perform better, faster and more reliably while helping companies leverage their existing networking infrastructure.

CLI Initial Setup

Application Note 305 – CLI Initial Setup Procedure



Select RADIO button: **No, not this time**
Click Next



Select **Install from a list or specific location (Advanced)**
Click Next

The driver search installation options window appears

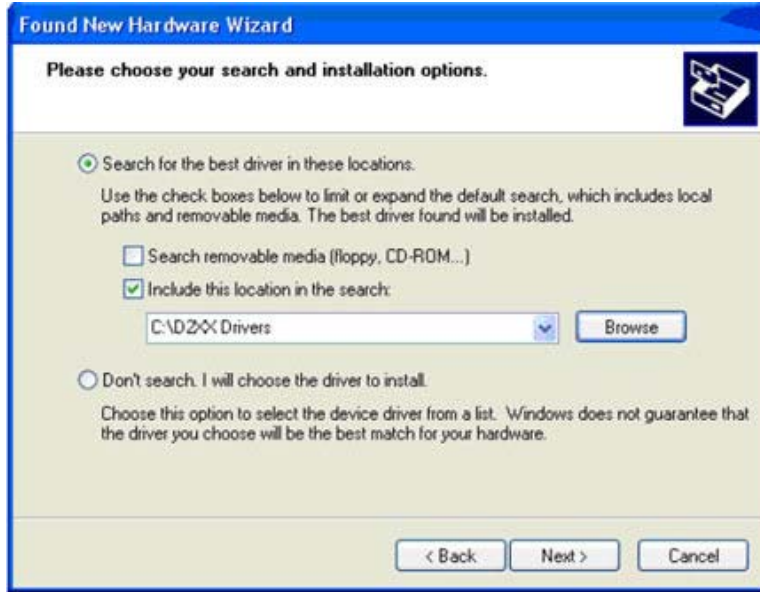


Transition Networks, Inc.
10900 Red Circle Drive
Minnetonka, MN 55343
USA

Transition Networks Inc. offers networking connectivity solutions that make networks perform better, faster and more reliably while helping companies leverage their existing networking infrastructure.

CLI Initial Setup

Application Note 305 – CLI Initial Setup Procedure



Click **Browse**.

Locate and select the USB driver downloaded earlier

Click **Next**.

Installation of the driver begins

When finished installing, click **Finish**.

After USB driver installation, configure the PC COM port.

Set up the terminal emulator:

Bits per second: 115200

Data bits: 8

Parity: none

Stop bit: 1

Flow Control none

Default user name and password

The S323x comes from the factory with the following default

Username/password.

USB CLI/Telnet/IP Interface:

Username: ION

Password: private

Default IP configuration

The S323x comes from the factory with the following default IP configuration.

IP address: 192.168.0.10

Subnet Mask: 255.255.255.0

Gateway: 192.168.0.1



Transition Networks, Inc.
10900 Red Circle Drive
Minnetonka, MN 55343
USA

Transition Networks Inc. offers networking connectivity solutions that make networks perform better, faster and more reliably while helping companies leverage their existing networking infrastructure.

CLI Initial Setup

Application Note 305 – CLI Initial Setup Procedure

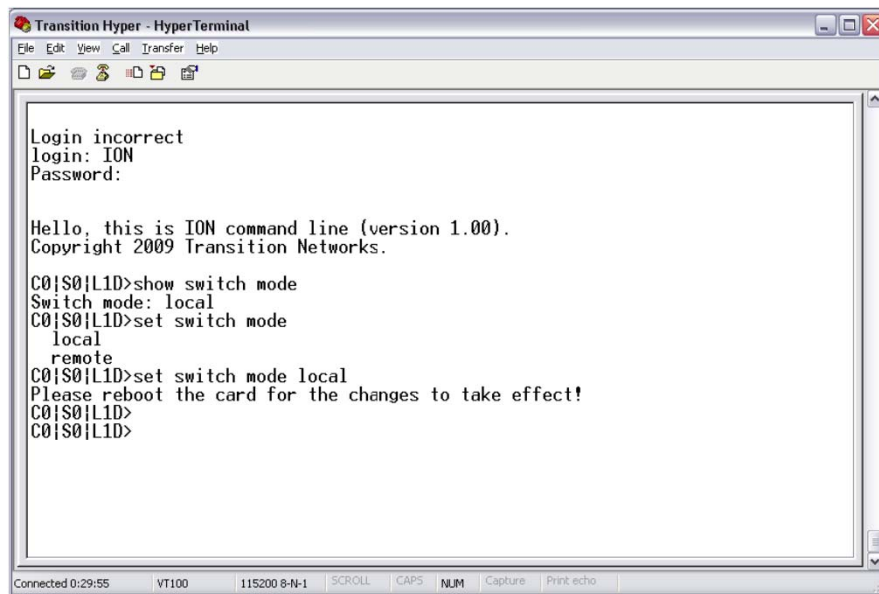
To log-in via the serial USB port using CLI, do the following:

1. Connect the S323x to the computer via the USB port.
2. Activate the terminal emulator software to launch the emulator screen.
3. Press the ENTER key to bring up the .login. prompt.
4. login =ION . Hit Enter and password *private*, then enter to bring up the device console> prompt
5. To access the commands list, at the console> prompt type ?
6. Press the ENTER key to show the .commands..

By default, the S323X is managed by the ION Management Module. Setting the mode to **local** indicates that the device is not managed by the ION Management Module but either a direct USB connection or a direct network connection via Telnet or the Web interface. Setting the mode to **remote**, indicates that the device is managed through the ION Management Module.

At the command prompt:

Type: **show switch mode**



```

Transition Hyper - HyperTerminal
File Edit View Call Transfer Help
Login incorrect
login: ION
Password:

Hello, this is ION command line (version 1.00).
Copyright 2009 Transition Networks.

C0|S0|L1D>show switch mode
Switch mode: local
C0|S0|L1D>set switch mode
local
remote
C0|S0|L1D>set switch mode local
Please reboot the card for the changes to take effect!
C0|S0|L1D>
C0|S0|L1D>

```

Displays whether the device is in local or remote switch mode, indicating where the device is managed.

local - device is managed through direct connection to the device.

remote - device is managed through the ION Management Module.



Transition Networks, Inc.
10900 Red Circle Drive
Minnetonka, MN 55343
USA

Transition Networks Inc. offers networking connectivity solutions that make networks perform better, faster and more reliably while helping companies leverage their existing networking infrastructure.

CLI Initial Setup

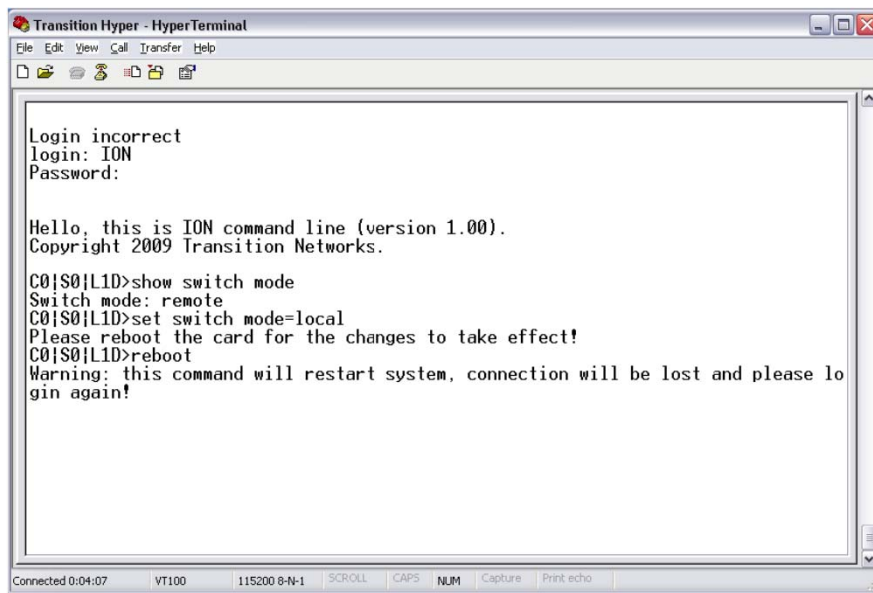
Application Note 305 – CLI Initial Setup Procedure

To change management mode:

Type: **set switch mode {local | remote}**

Enter either local or remote without brackets

Reboot the S323x to make the changes effective.



```
Transition Hyper - HyperTerminal
File Edit View Call Transfer Help
Login incorrect
login: ION
Password:

Hello, this is ION command line (version 1.00).
Copyright 2009 Transition Networks.

C0|S0|L1D>show switch mode
Switch mode: remote
C0|S0|L1D>set switch mode=local
Please reboot the card for the changes to take effect!
C0|S0|L1D>reboot
Warning: this command will restart system, connection will be lost and please login again!

Connected 0:04:07  VT100  115200 8-N-1  SCROLL  CAPS  NUM  Capture  Print echo
```

NOTE: After the S323x has rebooted, disconnect the VT100 session, unplug the USB cable from the NID, plug USB cable back in and reconnect the VT100 session.

After logging back in, ensure local state is enabled
(Will not be able to make any changes locally if not enabled)

Type: **show switch mode**

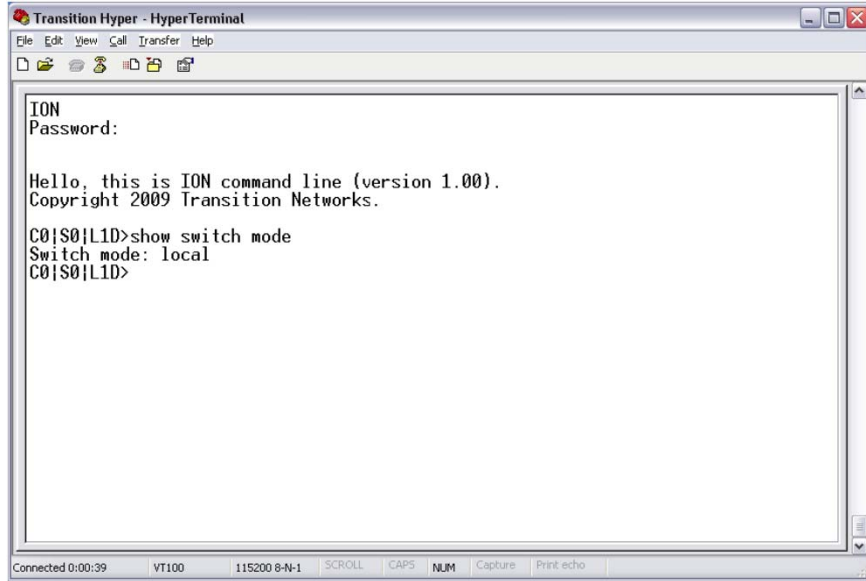


Transition Networks, Inc.
10900 Red Circle Drive
Minnetonka, MN 55343
USA

Transition Networks Inc. offers networking connectivity solutions that make networks perform better, faster and more reliably while helping companies leverage their existing networking infrastructure.

CLI Initial Setup

Application Note 305 – CLI Initial Setup Procedure



```
Transition Hyper - HyperTerminal
File Edit View Call Transfer Help
I
ION
Password:

Hello, this is ION command line (version 1.00).
Copyright 2009 Transition Networks.

C0|S0|L1D>show switch mode
Switch mode: local
C0|S0|L1D>
```

To change any of the IP parameters through the CLI interface, the management state must be enabled.

To show current IP configuration
Type: **show ip-mgmt config**

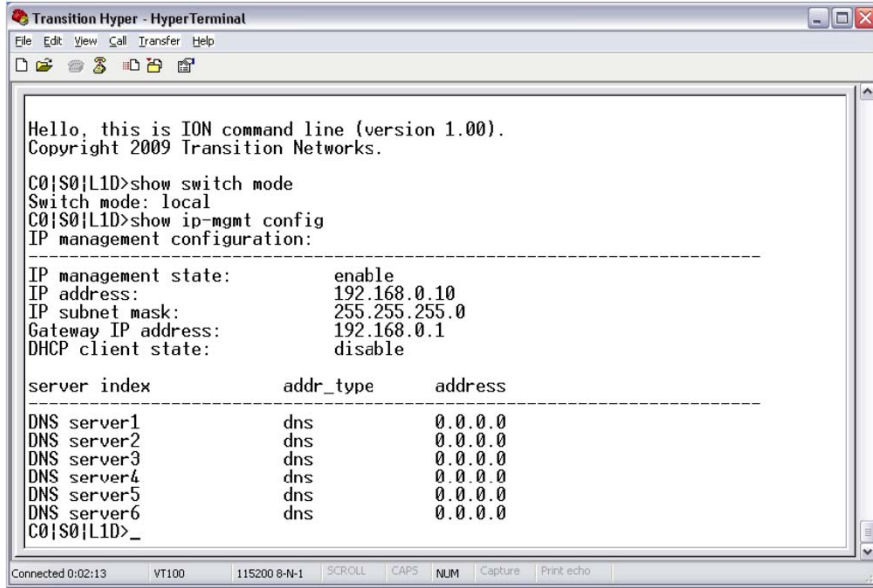


Transition Networks, Inc.
10900 Red Circle Drive
Minnetonka, MN 55343
USA

Transition Networks Inc. offers networking connectivity solutions that make networks perform better, faster and more reliably while helping companies leverage their existing networking infrastructure.

CLI Initial Setup

Application Note 305 – CLI Initial Setup Procedure



```

Transition Hyper - HyperTerminal
File Edit View Call Transfer Help
[Icons]
Hello, this is ION command line (version 1.00).
Copyright 2009 Transition Networks.
C0|S0|L1D>show switch mode
Switch mode: local
C0|S0|L1D>show ip-mgmt config
IP management configuration:
-----
IP management state:      enable
IP address:               192.168.0.10
IP subnet mask:          255.255.255.0
Gateway IP address:      192.168.0.1
DHCP client state:       disable
-----
server index      addr_type      address
-----
DNS server1      dns            0.0.0.0
DNS server2      dns            0.0.0.0
DNS server3      dns            0.0.0.0
DNS server4      dns            0.0.0.0
DNS server5      dns            0.0.0.0
DNS server6      dns            0.0.0.0
C0|S0|L1D>_
Connected 0:02:13  VT100  115200 8-N-1  SCROLL  CAPS  NUM  Capture  Print echo

```

To Set IP Management State

Type: **set ip.mgmt state {enable | disable}**

Enables or disables the ability to change any of the IP parameters through the CLI interface.

To set a new IP address and subnet mask on the device, enter the following:

Type: **set ip type =ipv4 addr=<xx> subnet.mask =<yy>**

xx = IP address of the NID

yy = subnet mask

To set a new default gateway for the device, enter the following:

set gateway type=ipv4 addr=<xx>

xx = IP address of the default gateway

Note that only one default gateway can be set.

To enable DHCP, enter

Type: **set dhcp state={enable | disable}**

To Show Management VLAN Configuration

Type: **show mgmt vlan config**

Displays the management VLAN configuration



Transition Networks, Inc.
10900 Red Circle Drive
Minnetonka, MN 55343
USA

Transition Networks Inc. offers networking connectivity solutions that make networks perform better, faster and more reliably while helping companies leverage their existing networking infrastructure.

CLI Initial Setup

Application Note 305 – CLI Initial Setup Procedure

```

Transition Hyper - HyperTerminal
File Edit View Call Transfer Help
C0|S0|L1D>show switch mode
Switch mode: local
C0|S0|L1D>show ip-mgmt config
IP management configuration:
-----
IP management state:      enable
IP address:               192.168.0.10
IP subnet mask:          255.255.255.0
Gateway IP address:      192.168.0.1
DHCP client state:       disable

server index             addr_type      address
-----
DNS server1             dns            0.0.0.0
DNS server2             dns            0.0.0.0
DNS server3             dns            0.0.0.0
DNS server4             dns            0.0.0.0
DNS server5             dns            0.0.0.0
DNS server6             dns            0.0.0.0
C0|S0|L1D>show mgmt vlan config
vlan id  vlan state      vlan portlist
-----
0        disable        none
C0|S0|L1D>

```

To Set a Management VLAN ID

Type: **set mgmt vlan vid=<xx>**

Defines the management VLAN ID (2.4094)

```

Transition Hyper - HyperTerminal
File Edit View Call Transfer Help
IP management state:      enable
IP address:               192.168.0.10
IP subnet mask:          255.255.255.0
Gateway IP address:      192.168.0.1
DHCP client state:       disable

server index             addr_type      address
-----
DNS server1             dns            0.0.0.0
DNS server2             dns            0.0.0.0
DNS server3             dns            0.0.0.0
DNS server4             dns            0.0.0.0
DNS server5             dns            0.0.0.0
DNS server6             dns            0.0.0.0
C0|S0|L1D>show mgmt vlan config
vlan id  vlan state      vlan portlist
-----
0        disable        none
C0|S0|L1D>set mgmt vlan vid=15
C0|S0|L1D>show mgmt vlan config
vlan id  vlan state      vlan portlist
-----
15       disable        5,6,7,8
C0|S0|L1D>

```



Transition Networks, Inc.
10900 Red Circle Drive
Minnetonka, MN 55343
USA

Transition Networks Inc. offers networking connectivity solutions that make networks perform better, faster and more reliably while helping companies leverage their existing networking infrastructure.

CLI Initial Setup

Application Note 305 – CLI Initial Setup Procedure

To Set Management VLAN Ports

Type: **set mgmt vlan port=<xx>**

Specifies the port(s) that will be part of the management VLAN. If more than one port is specified, they must be separated by a comma (i.e. port=1,2)

```

server index          addr_type  address
-----
DNS server1          dns        0.0.0.0
DNS server2          dns        0.0.0.0
DNS server3          dns        0.0.0.0
DNS server4          dns        0.0.0.0
DNS server5          dns        0.0.0.0
DNS server6          dns        0.0.0.0
C0|S0|L1D>show mgmt vlan config
vlan id  vlan state  vlan portlist
-----
0        disable    none
C0|S0|L1D>set mgmt vlan vid=15
C0|S0|L1D>show mgmt vlan config
vlan id  vlan state  vlan portlist
-----
15       disable    5,6,7,8
C0|S0|L1D>set mgmt vlan port=1
C0|S0|L1D>show mgmt vlan config
vlan id  vlan state  vlan portlist
-----
15       disable    1
C0|S0|L1D>

```

To enable/disable Management VLAN Admin State

Type: **set mgmt vlan state=<{enable | disable}>**

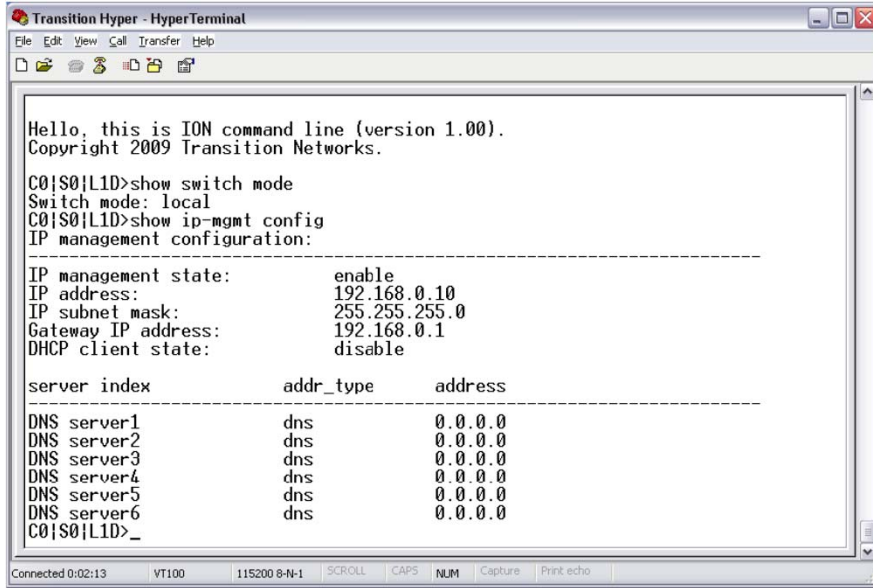


Transition Networks, Inc.
10900 Red Circle Drive
Minnetonka, MN 55343
USA

Transition Networks Inc. offers networking connectivity solutions that make networks perform better, faster and more reliably while helping companies leverage their existing networking infrastructure.

CLI Initial Setup

Application Note 305 – CLI Initial Setup Procedure



```

Transition Hyper - HyperTerminal
File Edit View Call Transfer Help
Hello, this is ION command line (version 1.00).
Copyright 2009 Transition Networks.
C0|S0|L1D>show switch mode
Switch mode: local
C0|S0|L1D>show ip-mgmt config
IP management configuration:
-----
IP management state:      enable
IP address:               192.168.0.10
IP subnet mask:          255.255.255.0
Gateway IP address:      192.168.0.1
DHCP client state:       disable
-----
server index      addr_type      address
-----
DNS server1      dns            0.0.0.0
DNS server2      dns            0.0.0.0
DNS server3      dns            0.0.0.0
DNS server4      dns            0.0.0.0
DNS server5      dns            0.0.0.0
DNS server6      dns            0.0.0.0
C0|S0|L1D>_
Connected 0:02:13  VT100  115200 8-N-1  SCROLL  CAPS  NUM  Capture  Print echo

```

To reset to factory defaults

*Type: **reset factory***

Resets a card to its factory default configuration. This operation deletes **all** configuration information that was saved including any IP addresses you may have entered.

To logout of system:

*Type **quit***



Transition Networks, Inc.
10900 Red Circle Drive
Minnetonka, MN 55343
USA

Transition Networks Inc. offers networking connectivity solutions that make networks perform better, faster and more reliably while helping companies leverage their existing networking infrastructure.