

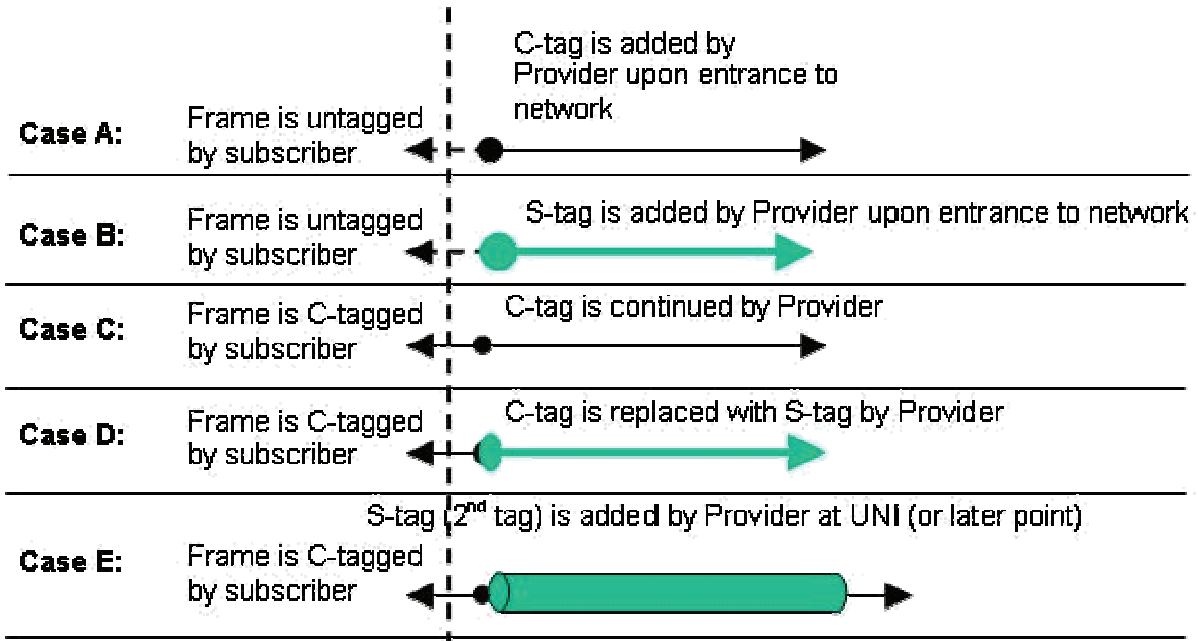
# Configuring VLAN

## App Note 304 – Configuring VLAN 100 with Provider S-Tag

### Configuring VLAN 100 with Provider S-Tag

Application note:

This application note describes how to properly configure an untagged customer VLAN (e.g VLAN 100) on X322x stand-alone and ION central card models and how to add a S-Tag (X88A8) by the Provider once the packet enters the network using Case B below:



Step 1: Add the VLAN ID (e.g. VLAN 100) into the VLAN DB from the VLAN Main Page. Set Port 1 to memEgressUntag. Set Port 2 for memEgressTag. Click ADD

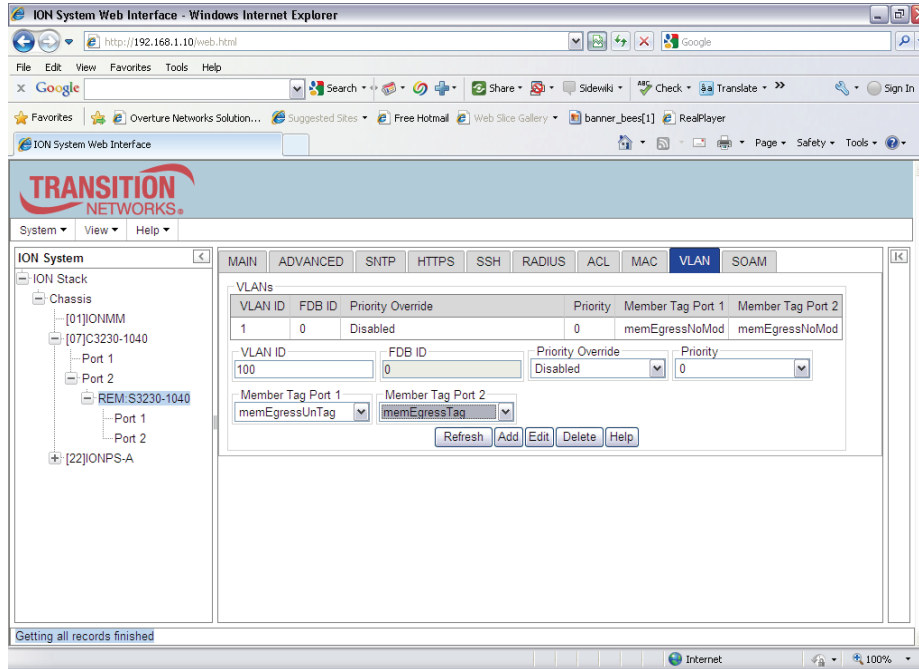


Transition Networks, Inc.  
10900 Red Circle Drive  
Minnetonka, MN 55343  
USA

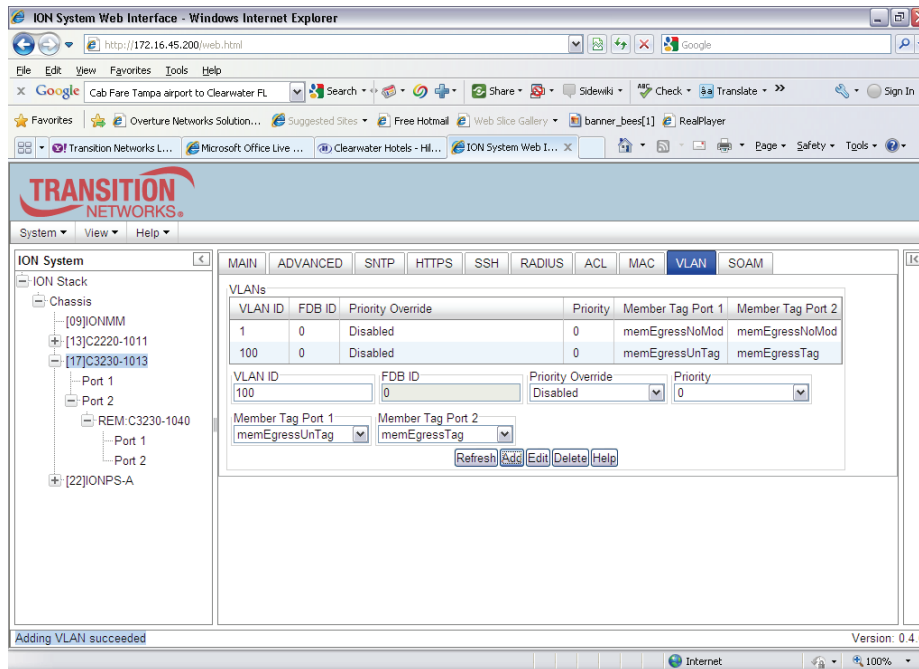
Transition Networks Inc. offers networking connectivity solutions that make networks perform better, faster and more reliably while helping companies leverage their existing networking infrastructure.

# Configuring VLAN

## App Note 304 – Configuring VLAN 100 with Provider S-Tag



Step 2: Repeat Step 1 above for the C322x NID if applicable - select ADD



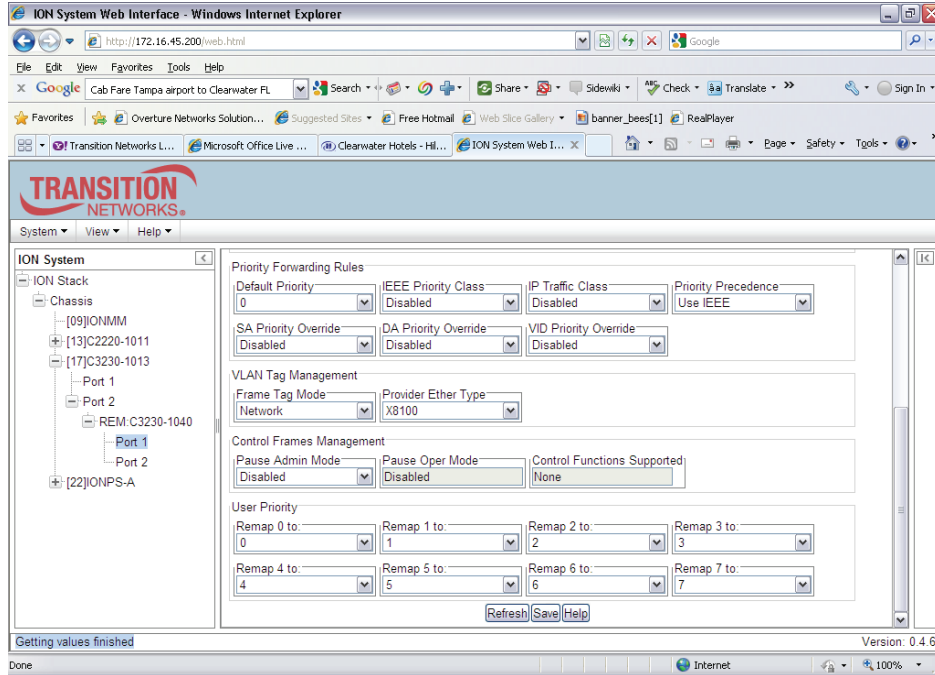
Transition Networks, Inc.  
10900 Red Circle Drive  
Minnetonka, MN 55343  
USA

Transition Networks Inc. offers networking connectivity solutions that make networks perform better, faster and more reliably while helping companies leverage their existing networking infrastructure.

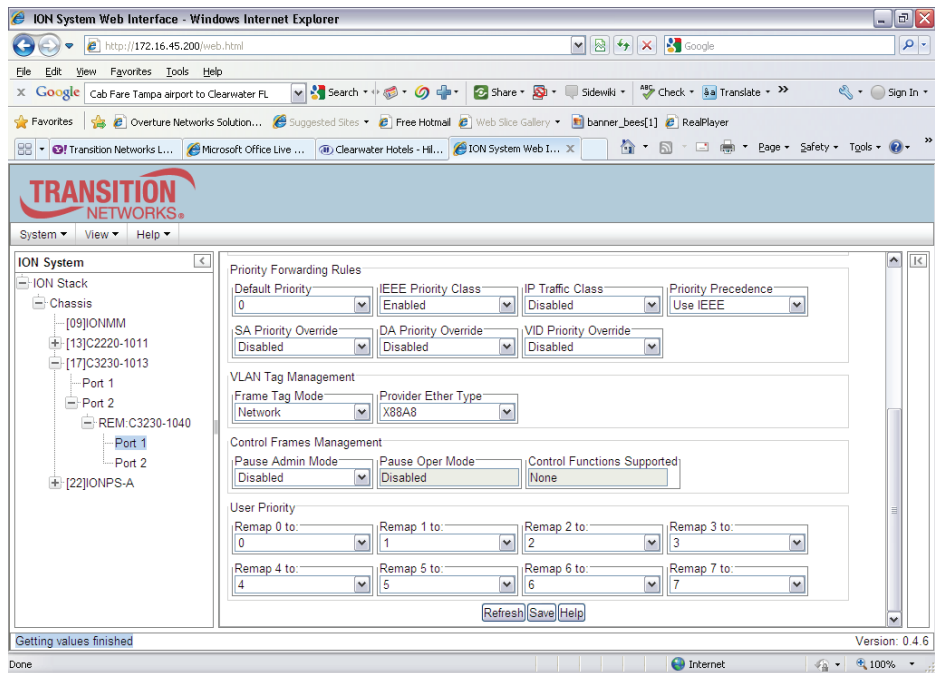
# Configuring VLAN

## App Note 304 – Configuring VLAN 100 with Provider S-Tag

Step 2: Repeat Step 1 above for the C322x NID if applicable - select ADD



Step 3: Go to REM S3230-1040, Port 1, Click on Advance Tab



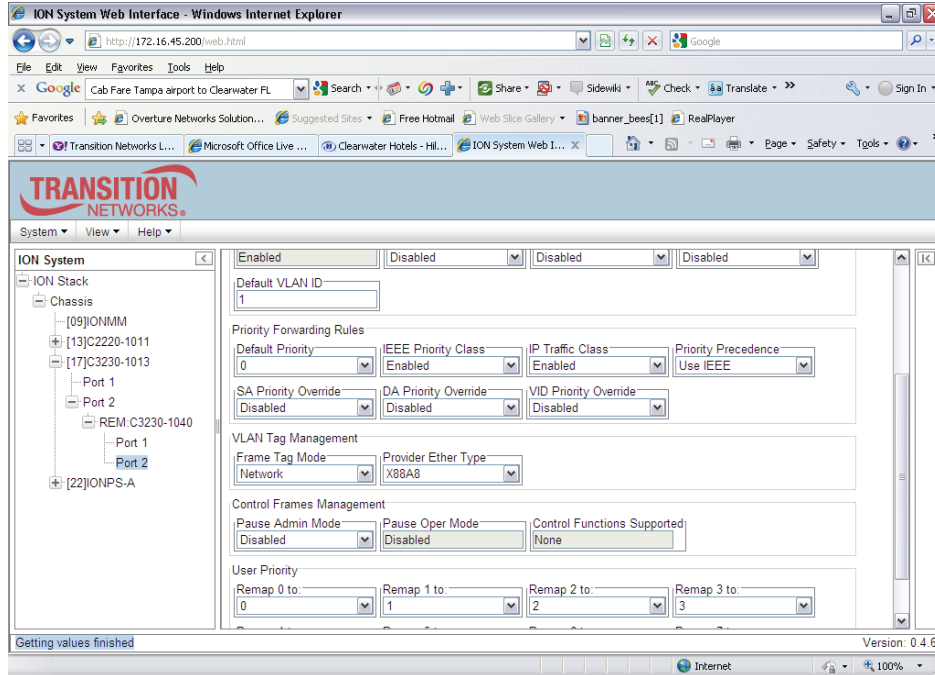
Transition Networks, Inc.  
10900 Red Circle Drive  
Minnetonka, MN 55343  
USA

Transition Networks Inc. offers networking connectivity solutions that make networks perform better, faster and more reliably while helping companies leverage their existing networking infrastructure.

# Configuring VLAN

## App Note 304 – Configuring VLAN 100 with Provider S-Tag

Step 4: Go to Port 2 of REMx323x, Advanced Tab, Set Frame Tag Mgmt to Network, EtherType to X88A8, Save



Repeat Steps 3 and 4 Above on C322x, if applicable.



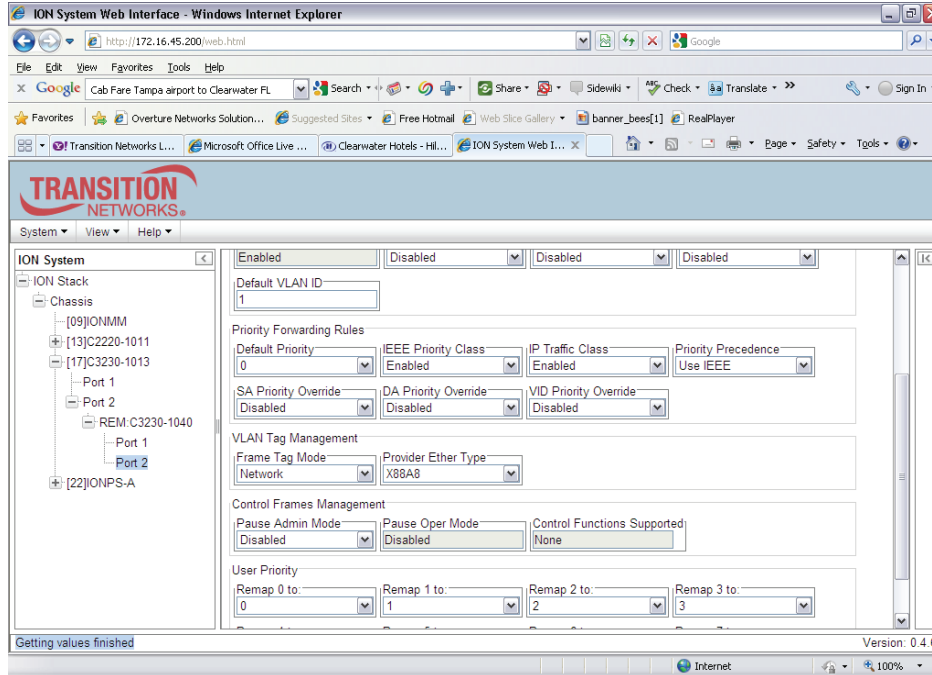
Transition Networks, Inc.  
10900 Red Circle Drive  
Minnetonka, MN 55343  
USA

Transition Networks Inc. offers networking connectivity solutions that make networks perform better, faster and more reliably while helping companies leverage their existing networking infrastructure.

# Configuring VLAN

## App Note 304 – Configuring VLAN 100 with Provider S-Tag

Step 5: Ensure VLAN 100 is correctly set-up in Database with Port 1 “memEgressUntag” and Port 2 – “memEgressTag”



Repeat Step 5 Above for C323x, if applicable



Transition Networks, Inc.  
10900 Red Circle Drive  
Minnetonka, MN 55343  
USA

Transition Networks Inc. offers networking connectivity solutions that make networks perform better, faster and more reliably while helping companies leverage their existing networking infrastructure.