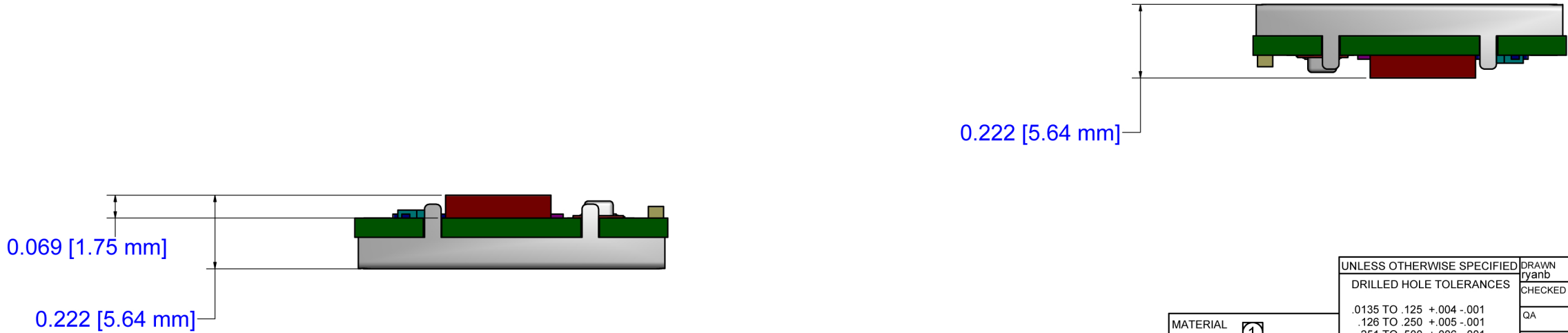
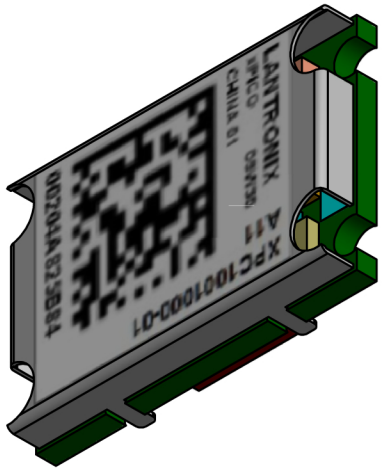
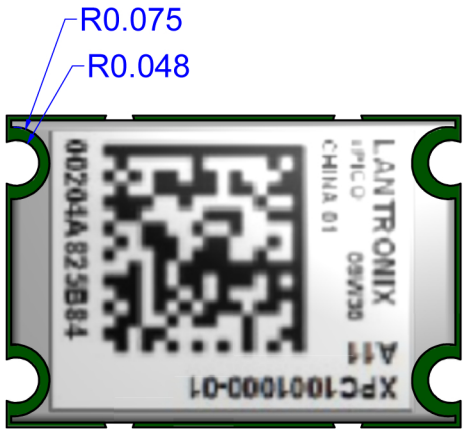
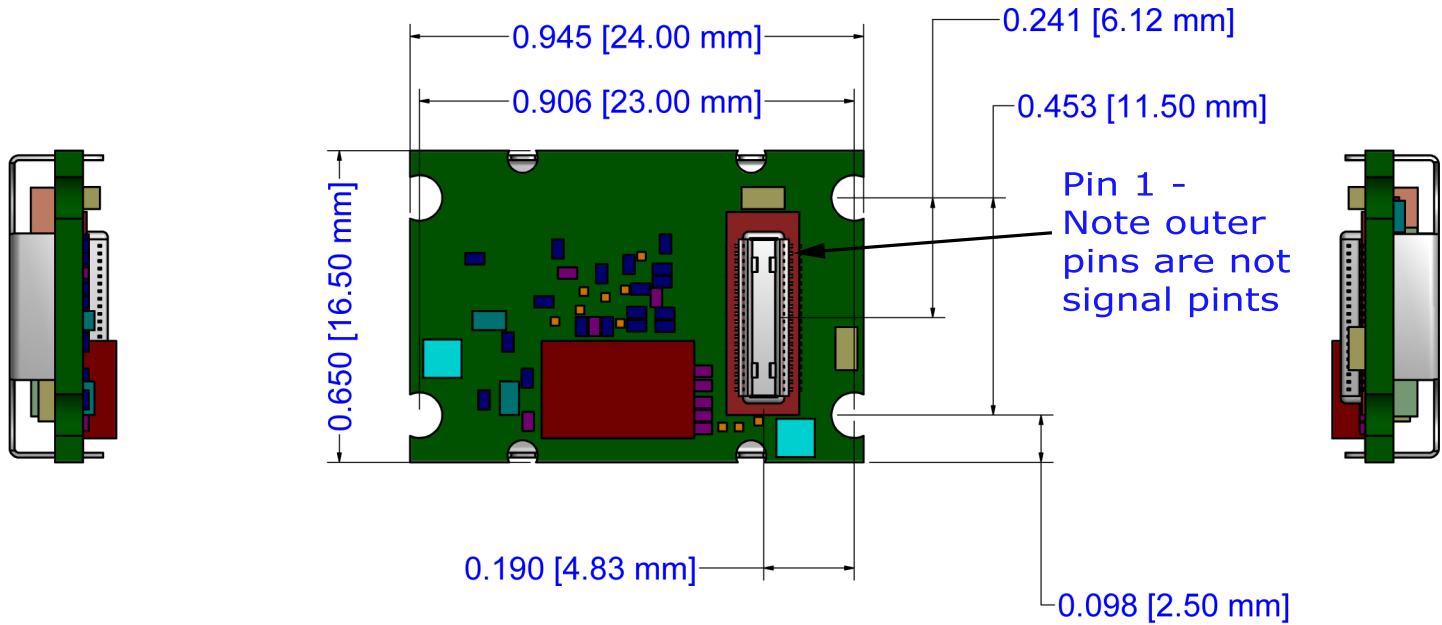
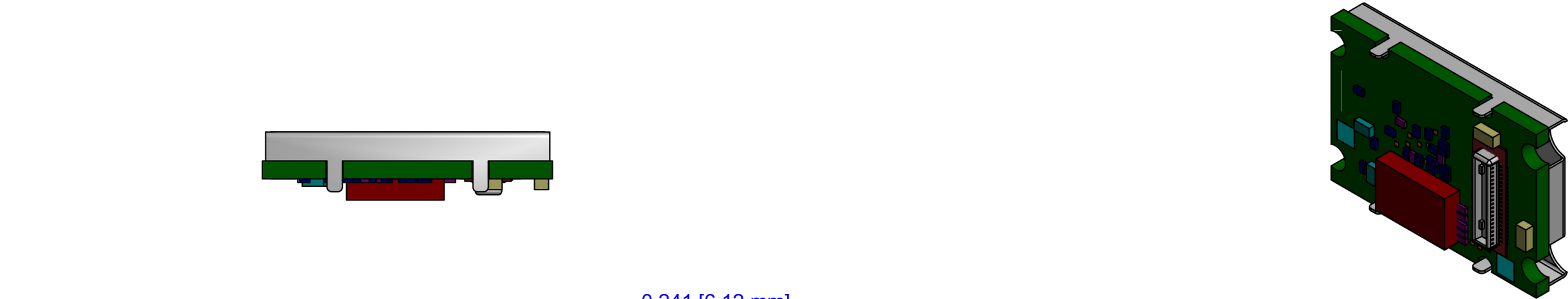
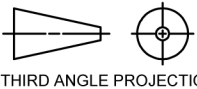


REVISION HISTORY			
REV	DESCRIPTION	DATE	APPROVED
A	INITIAL RELEASE	3/27/2012	-



THIS DOCUMENT CONTAINS INFORMATION
PROPRIETARY TO LANTRONIX. ANY
REPRODUCTION OF THIS DOCUMENT IS
EXPRESSLY PROHIBITED EXCEPT AS
LANTRONIX MAY OTHERWISE AGREE
IN WRITING.



THIRD ANGLE PROJECTION

MATERIAL	1
FINISH	2
DIMENSIONS ARE IN INCHES FRACT. $\pm 1/64$ ANG. $\pm 0^{\circ}30'$ TOL. .XX $\pm .01$.XXX $\pm .005$	

UNLESS OTHERWISE SPECIFIED	
DRILLED HOLE TOLERANCES	
.0135 TO .125	$+.004 \text{ } -.001$
.126 TO .250	$+.005 \text{ } -.001$
.251 TO .500	$+.006 \text{ } -.001$
.501 TO .750	$+.008 \text{ } -.001$
MACH. FINISH 63 OR BETTER REMOVE ALL BURRS & BREAK SHARP EDGES R.010 MAX.	
DO NOT SCALE DRAWING	

DRAWN	ryanb	3/27/2012
CHECKED		
QA		
MFG		
APPROVED		

167 Technology Irvine, CA 92618 (949) 453-3990	
LANTRONIX	
TITLE	
xPico Device Server Module	
SIZE	D
DWG NO	XPC1001000-01
REV	A
SCALE	
SHEET	1 OF 1